

## HTM hospital fittings

**easy to grip,** can be  
**operated** by either  
**hands or wrist**



HTM09025CP



HTM09050CP



HTM09051CP

### Introduction

The HTM thermostatic hospital fitting is purposely designed for use in hospitals, healthcare and commercial applications. The long sequential lever rotates smoothly through 180° and can be operated easily by either the wrist or elbows. Making it ideal for use in scrub areas, consulting rooms, Doctors surgeries or anywhere that hygiene is paramount.

- Simple operation
- High polished chrome
- Easy to grip
- In line isolating ball valves
- Complies with HTM64 type TB H2a
- Available with deck mounts and extended legs

### Product Range

Description	Code
HTM64 Hospital Fitting	HTM09025CP
HTM64 Hospital Fitting with Extended Legs	HTM09050CP
HTM64 Hospital Fitting with Deck Mounting Legs	HTM09051CP

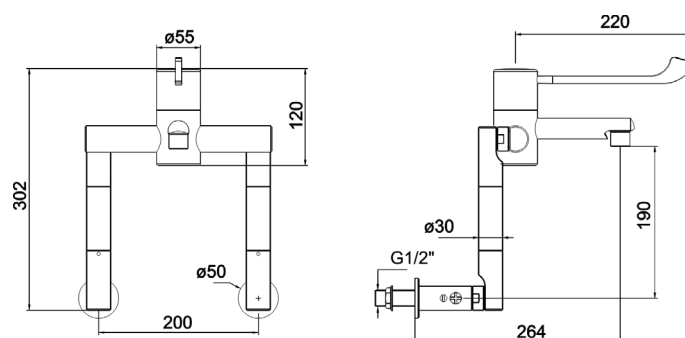
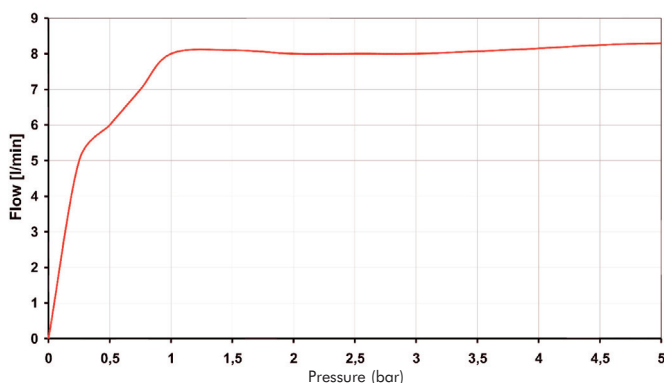
### Features

#### ■ Technical Specification

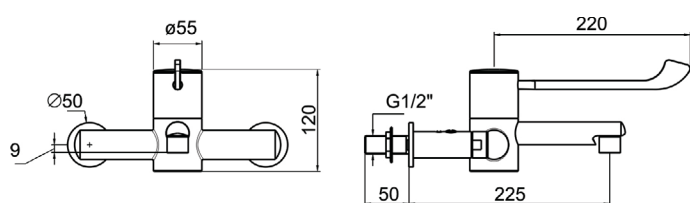
Max Dynamic Pressure	5 Bar
Max Static Pressure	12 Bar
Min Operating Pressure	0.2 Bar
Max Inlet Temperature	85°C
Min Inlet Temperature	10°C
Pre-set Factory Temperature setting	43°C
Temperature Stability	±2°C
Min temperature. Differential to ensure for failsafe between hot and cold supplies	10°C
Max unbalanced pressure ratio (with flow regulators)	15:1
Max unbalanced pressure ratio (without flow regulators)	5:1
D08 working pressure ranges (low pressure)	0.2 - 1 Bar
D08 working pressure ranges (High pressure)	1 - 5 Bar

# HTM hospital fittings

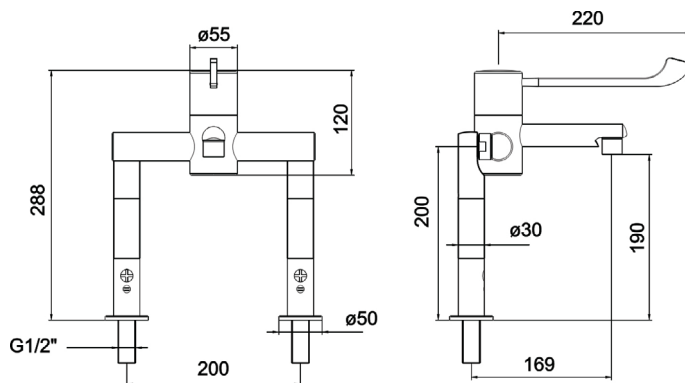
## Flow Chart



HTM09050CP



HTM09025CP



HTM09051CP

INSPIRING CONFIDENCE

inta

E&OE  
03/2011

AIRFIELD INDUSTRIAL ESTATE, HIXON, STAFFORD, ST18 0PF  
T. 01889 272180 F. 01889 272181 E. SALES@INTATEC.CO.UK  
WWW.INTATEC.CO.UK | WWW.ANTISCALD.CO.UK