

SPECFLUE

Ceramic



A stack of benefits
TONA
CHIMNEY SYSTEMS

Product Information

Specflue Ceramic is a CE approved twin wall insulated chimney system, suitable for appliances burning modern day fuels including wood pellets, biofuels and solid fuel. The material specification and construction of the product has been designed specifically to withstand very high temperatures and aggressive conditions within the flue caused by slumbering and burning of some fuels.

The inner liner is manufactured out of 4mm thick engineered Ceramic, with a high grade mineral wool insulation, encased by a stainless steel outer skin. It is available in three diameters, 130mm, 150mm and 200mm internal diameter including various adaptors, pipes, bends, tees and support components.

CE Approval

The design and specification of Specflue Ceramic has been tested and meets the requirements of BS EN 13063 part 1. Product designation T450 N1 D3 G50 - 0769-CPD-7039. The product has undergone thermal shock test to 1000°C (chimney fire conditions) for a period of 30 minutes.

Guarantee

Specflue Ceramic has a guarantee on the ceramic liner for 30 years from installation.

Chimney Weights

The product has been designed also with weight in mind. The following weights are for metre runs excluding support components.

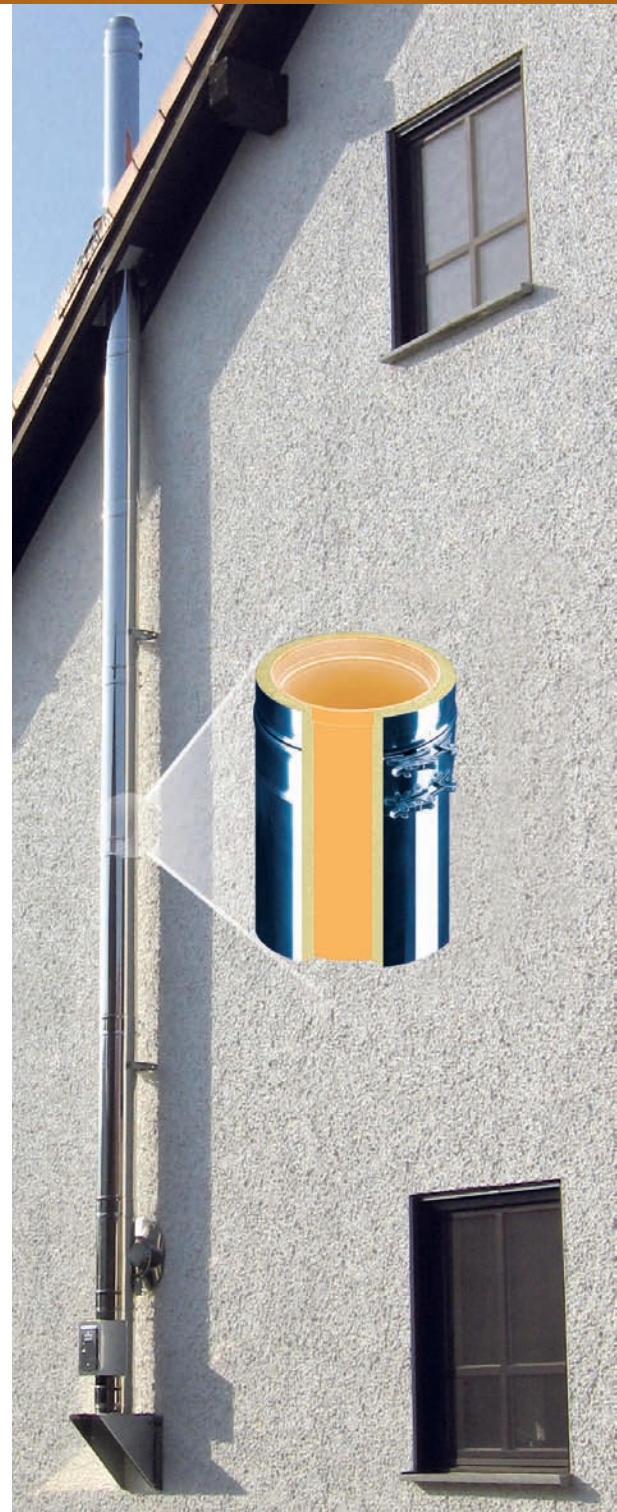
130mm – 9.7kg/m
150mm – 11.8kg/m
200mm – 16.3kg/m

Jointing

The joints within the system do not require any form of sealing. The components simply push fit together using locking bands provided. This ensures a firm and gas tight joint. The chimney system can be used both internally and externally. Condensation is kept to a minimum due to the Ceramic liner and quality mineral insulation used in manufacture. A 50mm air gap to combustible materials must be maintained.

Chimney Sizes:

130mm internal dia. - 198mm external dia.
150mm internal dia. - 215mm external dia.
200mm internal dia. - 265mm external dia.

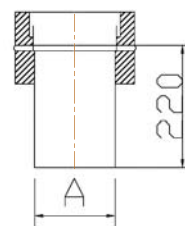


SPECFLUE

Dia	Part No.	A
130	1005093	120
150	1006093	145
200	1008093	195

Adaptor - Vit to Ceramic

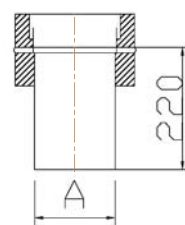
Used to connect a vitreous enamel flue pipe to the Ceramic chimney system.



Dia	Part No.	A
130	1005094	120
150	1006094	148
200	1008094	198

Adaptor - S/Wall to Ceramic

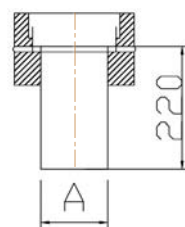
Used to connect single wall stainless steel to the Ceramic chimney system.



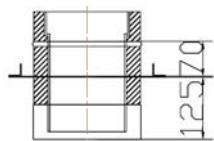
Dia	Part No.	A
130	1005097	95
130	1005197	75
150	1006097	120
200	1008097	170

Increasing Adaptor

Used to increase in size off the appliance or flue pipe to the Ceramic chimney system.



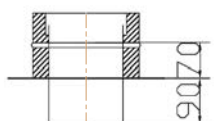
Starting Components



Intermediate Anchor Plate

Used to provide load bearing support and installed intermediately within a joint.

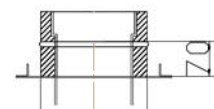
Dia	Part No.
130	1005066
150	1006066
200	1008066



Mounting Plate with spigot

Used to support and secure the base of the chimney with a connection spigot for flue pipes/flue liners.

Dia	Part No.
130	1005527
150	1006527
200	1008527



Base Support Plate

Used to support and secure the base of the chimney onto a concrete lintel or block/brickwork.

Dia	Part No.
130	1005089
150	1006089
200	1008089

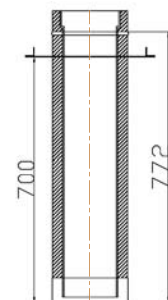


Ceramic

Dia	Part No.
130	1005003
150	1006003
200	1008003

Support Pipe - 772mm

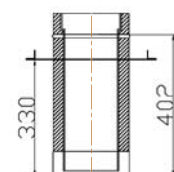
This component is used to provide load bearing support at ceiling level, taking the chimney weight off the appliance and flue pipe connection. It has a 772mm installed pipe allowing no joints to be made within the floor void. The support plate has ventilation holes to facilitate boxing in of the chimney system.



Dia	Part No.
130	1005004
150	1006004
200	1008004

Support Pipe - 402mm

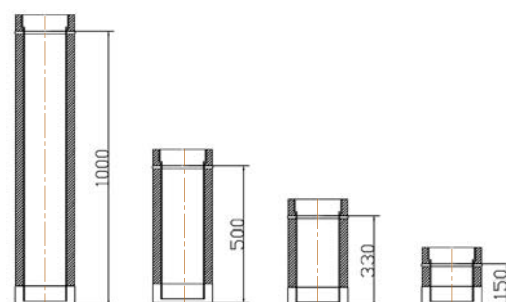
Used in the same way as the longer version but with a 402mm installed pipe.



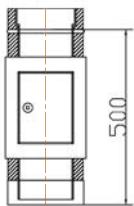
Pipes

There are four straight pipes available, 1000, 500, 330 and 150mm in all three diameters. These are installed lengths and are supplied with a locking band.

Dia	Part No. 1000mm	500mm	330mm	150mm
130	1005002	1005005	1005012	1005006
150	1006002	1006005	1006012	1006006
200	1008002	1008005	1008012	1008006



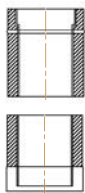
Pipes



Inspection Pipe 500mm

This pipe provides access for cleaning and inspection of the flue way. It is supplied with a locking band.

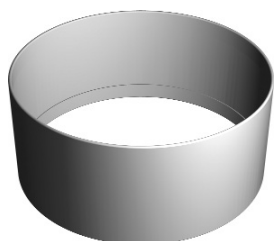
Dia	Part No.
130	1005013
150	1006013
200	1008013



Adjustable Pipe 180 - 330mm

There are two adjustable pipes available. One has the Ceramic inner liner which needs to be cut to suit on site. There is also a stainless steel telescopic version which can only be used after the initial connection to the chimney system.

Dia	Ceramic Part No.	S/Steel Part No.
130	1005015	1005016
150	1006015	1006016
200	1008015	1008016



Locking Band

Manufactured entirely out of stainless steel with a double bolt fixing, the locking band is supplied with every component that requires one. The double bolt fixing adds stability to joints and allows a maximum of 2.7mtrs to free stand above last support.

Dia	Part No.
130	1005086
150	1006086
200	1008086



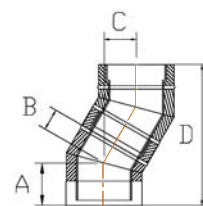
Ceramic

30 deg bend

Dia	Part No.	A	B	C	D
130	1005023	120	60	90	336
150	1006023	122	62	92	343
200	1008023	129	69	99	369

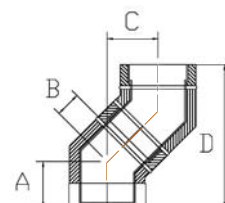
Bends – 30/45 deg

These are used to provide a change in direction or an offset within the chimney system using two bends with additional pipes if required.



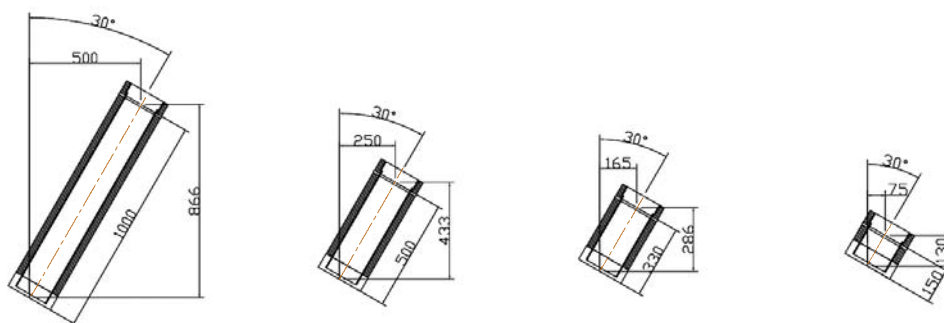
45 deg bend

Dia	Part No.	A	B	C	D
130	1005022	128	68	139	335
150	1006022	132	72	144	348
200	1008022	142	82	158	382

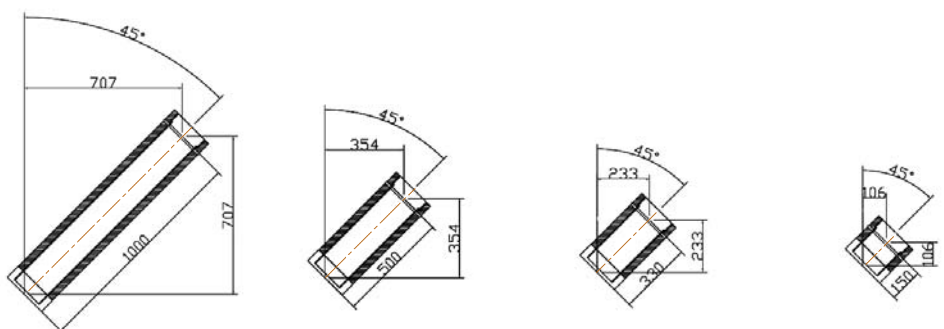


Offset Pipes

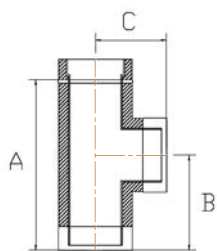
30 deg pipes



45 deg pipes

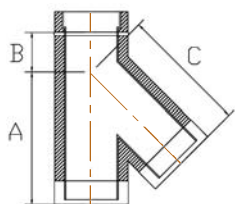


Bends/Tees



Tees – 90/135 deg

Used at the base of the chimney system, tees provide access for cleaning at the bottom of the vertical run.

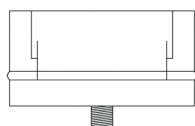


90 tee

Dia	Part No.	A	B	C
130	1005043	500	279	233
150	1006043	500	279	233
200	1008043	500	279	259

135 tee

Dia	Part No.	A	B	C
130	1005044	381	184	353
150	1006044	391	174	374
200	1008044	415	150	435



Tee Plug with drain

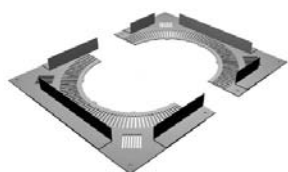
Used at the base of the chimney, the plug is easily removed to provide cleaning access and removal of condense within the system.

Dia	Part No.
130	1005532
150	1006532
200	1008532

Support Components

Roof Support

Used to provide lateral support on rafters, trusses and joists at roof level.



Ventilated Firestop

Used where the Ceramic penetrates through internal floors at the entry and exit point of a combustible or non combustible enclosure. This component provides adequate ventilation of the shaft and allows the chimney to be installed 50mm away from combustible materials.

Dia	Part No.
130	1005082
150	1006082
200	1008082



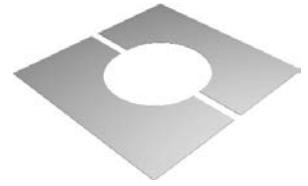
Ceramic

Support Components

Dia	Part No. 0 deg	30 deg	45 deg
130	1005367	1005368	1005369
150	1006367	1006368	1006369
200	1008367	1008368	1008369

Adjustable Firestop Plate

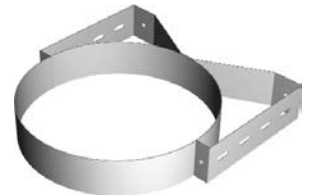
Available in 0°, 30° and 45°, these plates are used where the chimney passes vertically or at an angle through the roof or internal walls.



Wall Band

Providing lateral support, wall bands are used at 4.0m centres above any load bearing support component. There are four wall bands within the range giving 50mm – 400mm clearance away from the wall surface.

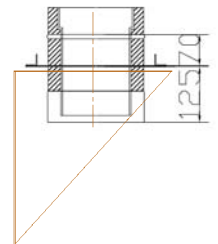
Dia	Part No. 50mm	50-80mm	50-230mm	50-400mm
130	1005088	1005064	1005067	1005068
150	1006088	1006064	1006067	1006068
200	1008088	1008064	1008067	1008068



Wall Support

Used at the base or intermediately, wall supports provide load bearing support. There are three wall supports within the range giving 50mm – 380mm clearance away from the wall surface.

Dia	Part No. 50-100mm	80-250mm	80-400mm
130	1005998	1005062	1005999
150	1006998	1006062	1006999
200	1008998	1008062	1008999



Guy Wire Bracket

For installations exceeding 2.7m high above the last support, guy wire brackets can be used with rigid stays for additional support.

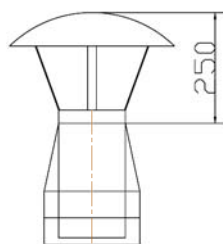
Dia	Part No.
130	1005085
150	1006085
200	1008085

Trim Collar Rosette

This component provides a neat finish at ceiling level. They can only be used where the chimney system above the floor is not enclosed within a shaft.



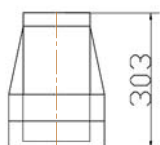
Terminals/Flashings



Rain Cap

This terminal provides rain protection to the chimney system. It is supplied in two parts - the rain cap fitting with the taper terminal.

Dia	Part No.
130	1005074
150	1006074
200	1008074



Taper Terminal

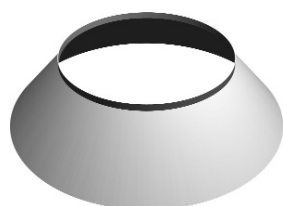
This open terminal provides a neat finish to the chimney system. It can also be used to connect single wall and flexible flue liner components above the Ceramic.

Dia	Part No.
130	1005073
150	1006073
200	1008073



Flashings

Used to weather the roof surface where the chimney system penetrates through the roof construction. Available from flat to any angle and manufactured out of lead and aluminium to suit any roof tiles/slates.



Storm Collar

This component must be used to weather the top of the flashing. A bead of Silicone sealant is required to give a water tight joint.

Dia	Part No.
130	1005041
150	1006041
200	1008041
Silicone	5500730



Ceramic

Installation Instructions



- Specflue Ceramic must comply with and be installed according to current building regulations
- Always consult the appliance manufacturer to confirm the correct chimney diameter required for the installation
- No special tools are needed to carry out a standard installation. No jointing sealants/compounds are required to seal the joints
- Connection can be made directly to the appliance or to an approved flue pipe. The maximum horizontal run from a rear outlet stove should be 150mm
- Ensure a minimum 50mm air gap clearance to combustibles throughout the entire length of the chimney system
- Where bends are required, they should be angled at no more than 45 degrees to the vertical with a maximum of four to be used in one system
- Specflue Ceramic must be adequately supported with the designed components
- The outlet and termination of the chimney system must comply with current building regulations. A maximum length of 2.7metres can be supported without additional support. Rigid stays with support brackets may be used for longer external runs
- The external section of the chimney system can be powder coated/painted. Thoroughly degrease first, then dry and prime the surface ready for painting

Load Bearing Information

Due to the design of the Specflue Ceramic, the inner liner and the outer casing are not joined, thus reducing heat transfer. Subsequently, a load bearing support component must be used in every installation. Failure to include one will cause the weight of the inner ceramic liner to be transferred to the flue pipe/appliance.

Maximum Chimney Length that can be supported in mtrs

Component	Dia 130mm	150mm	200mm
Wall Support	20mtrs	16mtrs	12mtrs
Support Pipe	20mtrs	16mtrs	12mtrs

Wall bands are not load bearing and must be used at intervals not exceeding 4.0 metres after the main support.

For further design help and specification details, please contact the technical sales team.

Tel: 0800 90 20 220

SPECFLUE

Chimney Systems



Gas/Oil Vents



Chimney Liners



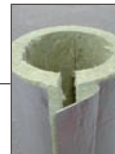
Connecting Flues



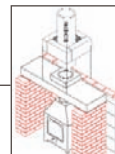
Chimney Tops



Insulating Products



Pumice/Clay Products



8 Curzon Road, Chilton Industrial Estate, Sudbury, Suffolk CO10 2XW

T: (Sales) 0800 90 20 220 • F: 0845 13 07 555

E: sales@specflue.com • W: www.specflue.com

For latest prices and delivery to your door visit MyTub Ltd - 0845 303 8383 - www.mytub.co.uk - info@mytub.co.uk 