

SENSELEC® INFRA-RED TAPS

Electronic basin controls to
avoid water wastage and
prevent cross
contamination



The Safety Valve Specialist

Reliance Water Controls Ltd

A Reliance Worldwide Company

Worcester Road, Evesham,
Worcestershire, WR11 4RA, UK

UK - Freephone: 0800 389 5931
Freefax: 0800 389 5932
Outside UK - Tel: +44 (0) 1386 712400
Fax: +44 (0) 1386 712401

Email: sales@rwc.co.uk

www.rwc.co.uk

Increasing demand for water from limited resources has provoked awareness of the need to control wastage, not only to reduce the cost of our water supply and disposal but also to limit the effects that such water consumption has on the environment in which we live.

Reliance's Senselec® electronically controlled basin taps ensure that water flows only while it is needed, eliminating waste and mess. Built-in anti-vandal features such as a timed cut-out prevent intentional or accidental activation of the water flow when it is not needed for washing.



The Senselec® infra-red taps are included in the Water Technology List. The list is issued by Defra and provides information on independently tested water-saving products which qualify for up front tax relief, to encourage the installation and use of water efficient systems.

The choice of infra-red no touch taps also significantly reduces the risk of cross contamination, helping to improve hygiene.

Range Description

The Senselec® infra-red taps allow a totally hands free operation so are ideal for use in environments such as hospitals and nursing homes where infection from cross contamination can be a serious and potentially deadly problem. All of the functions of the Senselec® IR tap range are programmed into the infra-red sensors. This includes the run time and the detection range, plus the anti-vandal control which stops the water flow when the sensor is obstructed (normal operation is resumed when the obstruction is removed from the sensor).

All taps in this range also have a delayed shut off, avoiding the frustration of nuisance shut offs when the user's hands move briefly away from the sensor and so improving user comfort.

The Senselec® IR tap range is available with either battery or mains power (through a transformer) and comes complete with solenoid valves and push fit connectors. The solenoid valves are magnetically latching so they use only a small amount of energy each time to open and close. All bodies are made from solid brass, which is chrome plated to a high standard.

Product range features and benefits

- Automatic infra-red flow control to save water and energy.
- Available in battery or mains/transformer powered options.
- Adjustable sensor detection range.
- Security lockout feature to stop continuous flow preventing vandalism and water wastage.
- Internal regulator giving economy and control.
- All products chrome plated to a high standard.

Additional Features

Functions of the Swan Neck tap, Curve tap and Basin controls can also be altered by the use of the wired remote control. This includes setting up the distance the sensor operates at and the activation of a hygiene flush. The hygiene flush feature is particularly useful in hospitals to help maintain water quality when the fitting remains unused for extended periods. The hygiene flush can be set at 6, 12 or 24 hour intervals.



Product Range

Description

Suitable for pressures from 0.5 to 5.0 bar, all the Senselec® taps incorporate a 6 litre per minute flow regulator. The security run time is set at 30 seconds. The taps have a delayed shut off of 2 seconds so that if the user's hands move briefly away from the sensor the tap does not continually turn on and off.

The Senselec® IR taps are available with either lithium battery or mains connection (through a 6 volt transformer) and come complete with a push fit solenoid valve, a flexible push fit hose and long connection cables.

The infra-red sensor fitted in the tap gets its energy from the power supply pack (either lithium battery or mains/transformer 6 volt). The sensor sends a microsecond long pulse to the solenoid valve when a presence is detected in the sensor's field.

The Senselec® IR taps are fabricated from solid brass which is chrome plated to a high standard, the sensors are pre-programmed and the detection field is site adjustable between 50mm and 250mm. The sensor also features a low battery level indicator.

Materials, hoses and solenoid valves are all WRAS approved.

Specifications

Minimum operating pressure:	0.5 bar
Maximum operating pressure:	5.0 bar
Maximum water temperature:	70°C
Flow regulator:	6 lpm

Materials

Tap

Body:	Standard brass
Connections:	Standard brass
Seals:	Nitrile

Hose

Connections:	Pushfit x 15mm spigot
Hose:	Stainless steel braided EPDM

Solenoid Valve

Body:	Glass filled nylon
Colour:	Natural white

Product Range

Senselec® IR Swan Neck Taps

SENS 250 100 Senselec® IR Swan Neck Basin Tap - Battery

SENS 251 100 Senselec® IR Swan Neck Basin Tap - Mains

Senselec® IR Curve Taps

SENS 250 310 Senselec® IR Curve Basin Tap - Battery

SENS 251 310 Senselec® IR Curve Basin Tap - Mains

Senselec® IR Tube Taps

SENS 250 300 Senselec® IR Tube Basin Tap - Battery

SENS 251 300 Senselec® IR Tube Basin Tap - Mains

Senselec® IR Cube Taps

SENS 250 305 Senselec® IR Cube Basin Tap - Battery

SENS 251 305 Senselec® IR Cube Basin Tap - Mains

Senselec® IR Basin Controls

SENS 250 125 Senselec® IR Basin Control, Cross Wall Spout - Battery

SENS 250 130 Senselec® IR Basin Control, Panel Mount Spout - Battery

SENS 251 125 Senselec® IR Basin Control, Cross Wall Spout - Mains

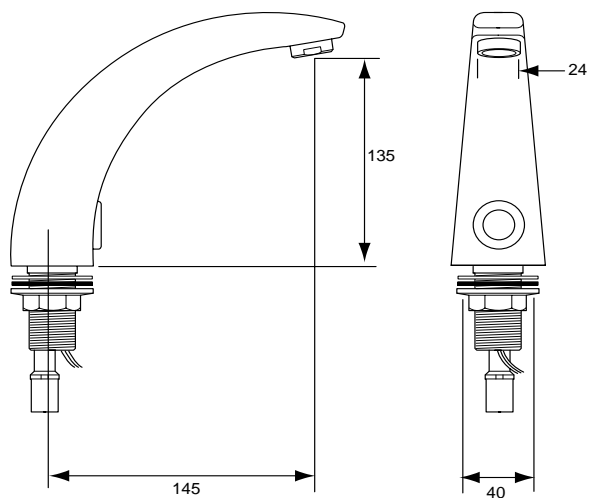
SENS 251 130 Senselec® IR Basin Control, Panel Mount Spout - Mains

Integrated wash hand sensor

Power supply:	6 volts/1300mAh
Consumption:	28µA (typical) - 40µA (max)
Adjustable Range:	50mm to 250mm
Factory setting:	120mm
Detection angle:	8°
Convenience delay:	2 secs
Security delay:	30 secs
Valve pulse time:	20 ms

SENS 250 100 - SENSELEC® IR SWAN NECK BASIN TAP - BATTERY

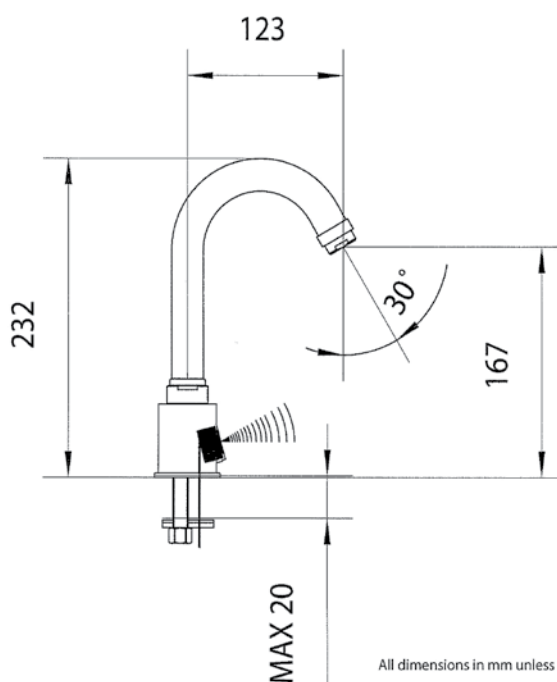
SENS 25I 100 - SENSELEC® IR SWAN NECK BASIN TAP - MAINS



All dimensions in mm unless stated

SENS 250 310 - SENSELEC® IR CURVE BASIN TAP - BATTERY

SENS 25I 310 - SENSELEC® IR CURVE BASIN TAP - MAINS



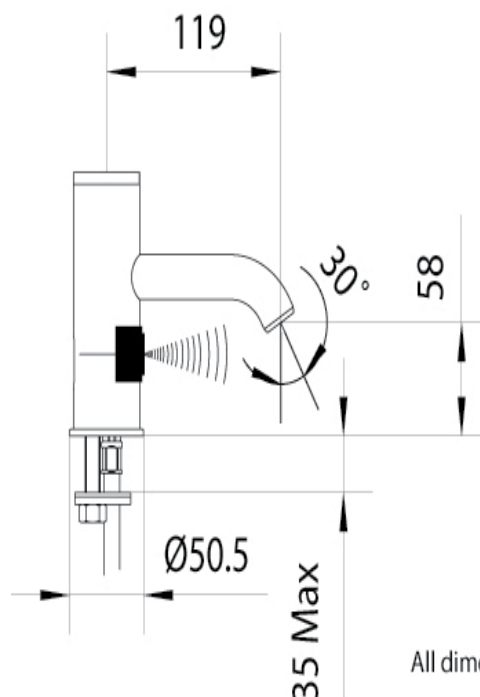
All dimensions in mm unless stated otherwise

Specify as

Reliance Part Number: SENS (choose option as applicable) Senselec® basin tap with pre-programmed infra red sensor, 2 sec delay before shut off, all pushfit connections, and a 30 sec security shut off to prevent vandalism, made from WRAS approved materials and complete with 6 lpm aerator/flow regulator, adjustable sensor detection area, and power supply pack (6 volt battery or mains/6 volt transformer).

SENS 250 300 - SENSELEC® IR TUBE BASIN TAPS - BATTERY

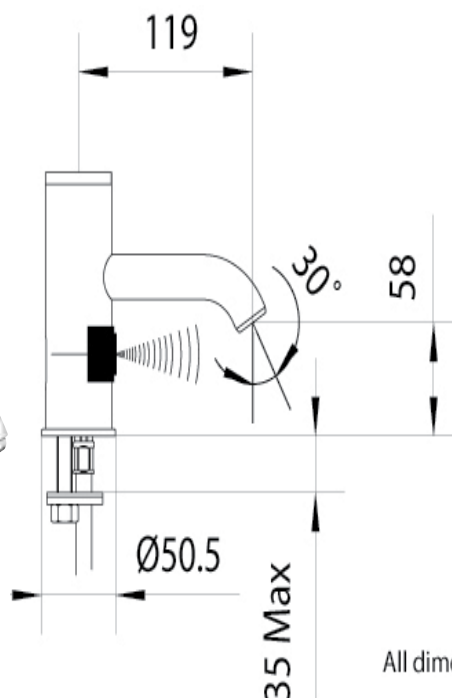
SENS 25I 300 - SENSELEC® IR TUBE BASIN TAPS - MAINS



All dimensions in mm unless stated

SENS 250 305 - SENSELEC® IR CUBE BASIN TAP - BATTERY

SENS 25I 305 - SENSELEC® IR CUBE BASIN TAP - MAINS



All dimensions in mm unless stated

Specify as

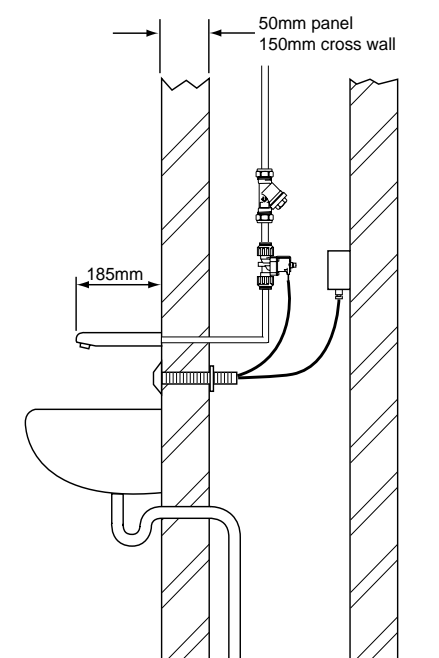
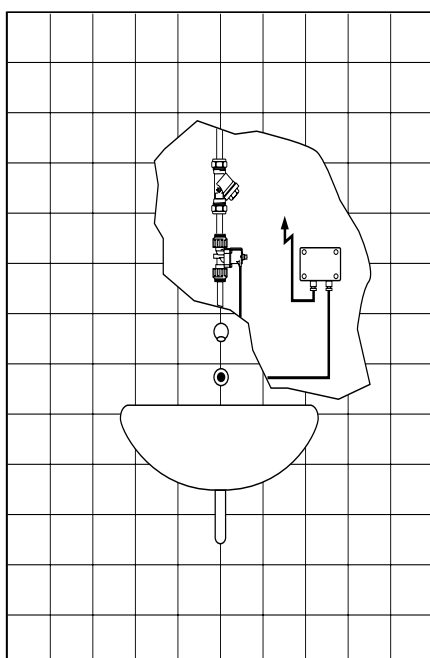
Reliance Part Number: SENS (choose option as applicable) Senselec® basin tap with pre-programmed infra red sensor, 2 sec delay before shut off, all pushfit connections, and a 30 sec security shut off to prevent vandalism, made from WRAS approved materials and complete with 6 lpm aerator/flow regulator, adjustable sensor detection area, and power supply pack (6 volt battery or mains/6 volt transformer).

SENS 250 125 - SENSELEC® IR BASIN CONTROL CROSS WALL SPOUT - BATTERY

SENS 250 130 - SENSELEC® IR BASIN CONTROL PANEL MOUNT SPOUT - BATTERY

SENS 251 125 - SENSELEC® IR BASIN CONTROL CROSS WALL SPOUT - MAINS

SENS 251 130 - SENSELEC® IR BASIN CONTROL PANEL MOUNT SPOUT - MAINS



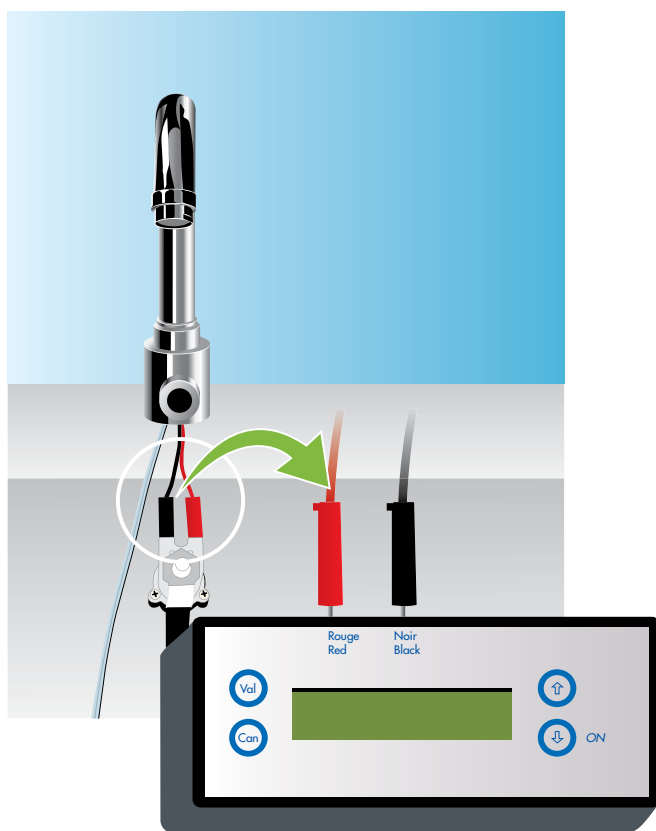
Specify as

Reliance Part Number: SENS (choose option as applicable) Senselec® basin control with pre-programmed infra red sensor, 2 sec delay before shut off, all pushfit connections, and a 30 sec security shut off to prevent vandalism, made from WRAS approved materials and complete with 6 lpm aerator/flow regulator, adjustable sensor detection area, and power supply pack (6 volt battery or mains/6 volt transformer).

SENS 250 000 - SENSELEC® WIRED REMOTE CONTROL

The remote control gives the installer the ability to accurately set up the product and to monitor usage. Functions include: monitoring the number of operations completed by the tap, the setting of the detection distance, the comfort interval, security settings, the hygiene flush interval and many more. The remote control is powered by a replaceable 9 volt battery.

To use the remote control simply disconnect the cable connections from the solenoid valve and re-connect them to the terminals on top of the remote control.

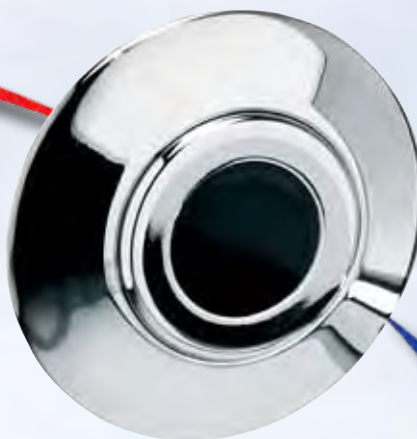


When the remote control is turned on, four core menus are presented which allow the user to select language, monitoring functions, sensor type and parameter. Having selected one of the core menus, sub menus are presented that can be selected to monitor the operation of the tap or to change the operation parameters.

One of the parameters that can be changed is that of the hygiene flush which is normally in the inactive mode for the standard tap set up but can be set to be active at a 6, 12 or 24 hourly interval with the flow set for any duration between 10 to 180 seconds. In addition to this the detection range, comfort timeout and safety timeout can also be set.

Note: - Wired remote control is only suitable for use with the Swan Neck tap, Curve tap and Basin controls.

SENSELEC® INFRA-RED TAPS



Reliance Water Controls Ltd

A Reliance Worldwide Company

Worcester Road, Evesham,
Worcestershire, WR11 4RA, UK

UK - Freephone: 0800 389 5931
Freefax: 0800 389 5932
Outside UK - Tel: +44 (0) 1386 712400
Fax: +44 (0) 1386 712401

Email: sales@rwc.co.uk

www.rwc.co.uk

Reliance has prepared the content of this document carefully but disclaims all warranties, express or implied, as to the accuracy of the information contained herein. Reliance reserves the right to make changes to the product and the information contained in this document at any time.

SENSIRTAPS - 002 - 11/09

© Reliance Water Controls Ltd 2009



The Safety Valve Specialist