

**Pland**

# Technical datasheet



## Deauville Drinking fountain

HAWS1001

Deauville drinking fountain



### Product features

### Dimensions

Length	359mm
Width	359mm
Depth	203mm

Model 1001 is a barrier-free, stainless steel drinking fountain with round sculpted bowl. Bubbler, waste strainer and push button are polished chrome-plated brass. Model includes vandal-resistant bottom plate, special mounting plate, and 1-1/4" O.D. waste arm. It is manufactured in 18 gauge, Type 304, No. 4 satin finish stainless steel for easy maintenance and provides the perfect finishing touch to any project. Model 1001 meets the Americans with Disabilities Act. Haws manufactures drinking fountains, electric water coolers and electric drinking fountains to be lead free by all known definitions including ANSI/NSF Standard 61, Section 9, California Proposition 65 and the Federal Safe Drinking Water Act.

### Maintenance

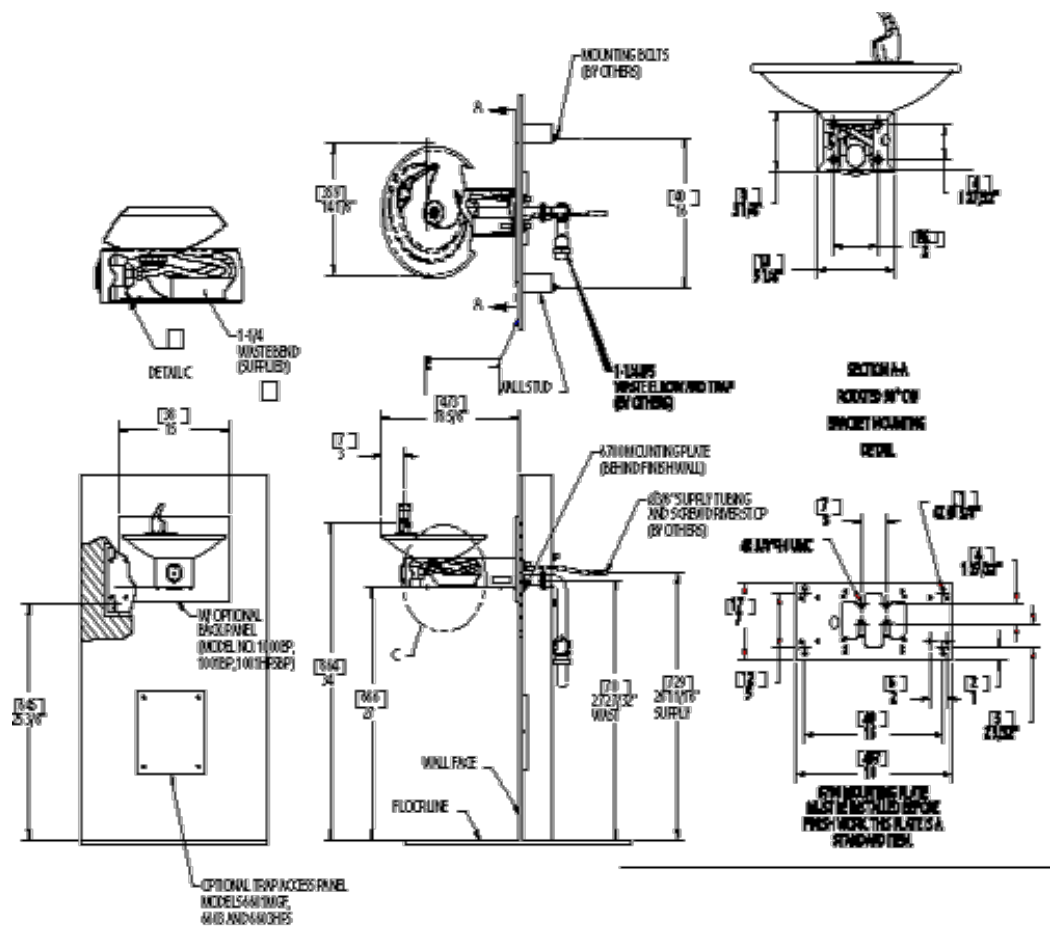
Clean with a mild detergent or soap and water for removing stains and fingerprints. Use only non-abrasive cleaners.

### Approvals and certification

ANSI/NSF Standard 61,

### Installation instructions

Mount to wall or cavity wall securely using installation instructions supplied



**Pland**, Lower Wortley Ring Road, Leeds, West Yorkshire LS12 6AA  
Tel: 0113 263 4184 Fax: 0113 279 8572

© Pland 2004