

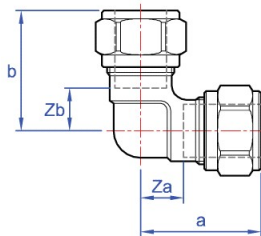


Elbow. copper x copper.

GENERAL INFORMATION

Size	Pattern No.	Box Qty	Code	Barcode	Price (£) ex VAT
6mm	K615	5	41118K	5022050066817	£11.24
8mm	K615	5	41119K	5022050066954	£10.17
10mm	K615	5	41120K	5022050067074	£10.38
12mm	K915	5	43121K	5022050096814	£11.53
15mm	KS615	5	61122K	5022050122056	£3.09
18mm	K915	5	43123K	5022050097170	£14.16
22mm	KS615	5	61124K	5022050122179	£5.27
28mm	K615	5	61125K	5022050122308	£17.82
35mm	K915	5	43126K	5022050097484	£50.33
42mm	K915	2	43127K	5022050097545	£68.16
54mm	K915	2	43128K	5022050097668	£117.28
15 x 10mm	K615	5	61138K	5022050611383	£12.99
15 x 12mm	K615	5	61139K	5022050611390	£14.58
22 x 15mm	K615	10	61131K	5022050122421	£19.41
28 x 22mm	K615	5	61140K	5022050122728	£18.50

DIMENSIONS (mm)



Code	Description	a	b	za	zb
41118K	6mm K615	22	22	9	9
41119K	8mm K615	22	22	8	8
41120K	10mm K615	26	26	9	9
43121K	12mm K915	28	28	9	9
61122K	15mm KS615	32	32	11	11
43123K	18mm K915	34	34	10	10
61124K	22mm KS615	37	37	15	15
61125K	28mm K615	42	42	19	19
43126K	35mm K915	48	48	22	22
43127K	42mm K915	55	55	26	26
43128K	54mm K915	66	66	36	36
61131K	22 x 15mm K615	33	35	10	13
61140K	28 x 22mm K615	37	37	15	15

PRESSURE & TEMPERATURE

Kuterlite 600 and 900 (sizes 8mm to 54mm) performance (Hydraulic) when correctly assembled with copper tube to BS EN 1057

Service temperature

Size	-15° C (Min)	30° C	90° C	120° C (Max)
6mm to 10mm	70 bar*	70 bar	40 bar	25 bar
12mm to 28mm	20 bar*	20 bar	10 bar	7 bar
35mm to 54mm	16 bar*	16 bar	7 bar	5 bar

*See Kuterlite Databook (page 19 Section F) - restrictions when used with chilled water

GUARANTEE

Pegler Yorkshire Kuterlite Guarantee - Terms and Conditions

Products are subject to a guarantee that is between Pegler Yorkshire and the final purchaser of the product. When correctly assembled with the stated tubes and pipe the length of guarantee is as follows:

Kuterlite fittings and valves installed with specified tubes and pipes with the exception of those listed below - 25 years.

Kuterlite Flexifit flexible connectors - 10 years

Kuterlite 600/900 fittings and valves installed with XPress Carbon Steel System tube in sizes up to 28mm - 10 years

Kuterlite 600/900 fittings and valves installed with other manufacturers carbon steel tube to DIN 2394/NEN 1982 in sizes up to 28mm - 5 years

The guarantee is subject to proof of purchase being supplied.

This guarantee does not affect any statutory rights the consumer may have in law.

The guarantee covers manufacturing or material defects when installed in accordance with our instructions on specified tube materials and applications, and does not cover parts subject to normal wear and tear.

This product range has been designed for the use of homeowners, domestic and commercial applications and therefore the Guarantee is subject to the product being properly selected for their intended service conditions.

The guarantee is not applicable where the product is fitted contrary to the conditions in the fitting instructions.

This is reinforced where valves are covered by the European Pressure Equipment Directive (PED97/23/EC) where Installation, Operating and Maintenance Instructions are supplied with each product and/or carton.

Provided it is installed correctly and receives adequate preventative maintenance it should give years of trouble-free service.

Abusive behaviour and accidental damage to the product are not covered by this guarantee.

The extent of this liability is limited to the cost of the replacement of the defective item and not to installation or consequential damages.

APPROVALS



[ETA](#)

kiwa

[KIWA GASTEC](#)

kiwa

[KIWA](#)

WRAS
APPROVED
PRODUCT

[WRAS](#)



[EMI](#)



[BSI](#)



[CSN](#)