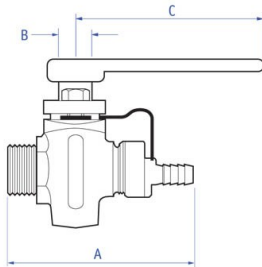




Bronze gland cock Male x Hose Union 10 Bar 120 deg C, ISO 228 (BS 2779), parallel thread (PT).

GENERAL INFORMATION

Size	Pattern No.	Pack 1 Qty	Code	Barcode
1/2	1832	5	130007	5013866014383
3/4	1832	4	130008	5013866014390
1	1832	2	130009	5013866014406



DIMENSIONS (mm)

Code	Description	A	B	C	Kg
130007	1/2 1832 GM HU GLAND COCK	93	10	86	0.44
130008	3/4 1832 GM HU GLAND COCK	117	14	95	0.76
130009	1 1832 GM HU GLAND COCK	145	16	121	1.32

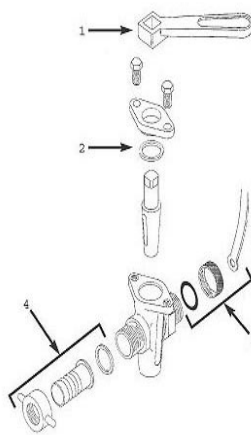
PRESSURE & TEMPERATURE

1832 Bronze Gland Cock	Minimum Operating Pressure (bar)	Maximum Cold Working Pressure (bar)	Maximum Hot Working Pressure (bar)
1/2 1832 GM HU GLAND COCK	No Minimum Operating Pressure	10.0 bar at temperatures up to 120°C	Not Suitable for Maximum Hot Working Pressure

MATERIAL SPECIFICATIONS

Number	Component	Material
1	Body	Gunmetal
2	Plug	Gunmetal
3	Gland	Brass Bar (1/2" and 3/4") Forged Brass (1")
4	Bolt	Brass Bar
5	Gland Packing	PTFE
6	Lever	Cast Iron
7	Pipe	Brass Bar
8	Boss	Brass Bar (1/2") Forged Brass (3/4" and 1")
9	Cap	Brass Bar
10	O Ring	WRc Approved Rubber
11	O Ring or Washer	O Ring - WRc Approved Rubber (1/2") Washer - Akulon (3/4" and 1")
12	Strap	Nylon 6

SPARES



1					
Pattern / Size	Description	Code	Barcode	Date From	Date To
1832 / 1/2	L2 LEVER	850052	5013866059377	01/01/1900	current
1832 / 3/4	L3.1/2 LEVER	850054	5013866059391	01/01/1900	current
1832 / 1	L4.1/2 LEVER	850056	5013866059407	01/01/1900	current

2					
Pattern / Size	Description	Code	Barcode	Date From	Date To
1832 / 1/2	PD2 PACKING DISC	850027	5013866059315	01/01/1900	current
1832 / 3/4	PD3 PACKING DISC	850376	5013866060342	01/01/1900	current
1832 / 1	PD4 PACKING DISC	850377	5013866060359	01/01/1900	current

3					
Pattern / Size	Description	Code	Barcode	Date From	Date To
1832 / 1/2	CS1 CAP AND STRAP	855100	5013866065149	01/01/1900	current
1832 / 3/4	CS2 CAP AND STRAP	855101	5013866065156	01/01/1900	current
1832 / 1	CS3 CAP AND STRAP	851500	5013866063947	01/01/1900	current

4					
Pattern / Size	Description	Code	Barcode	Date From	Date To
1832 / 1/2	HU4 HOSE UNION	817006	5013866058394	01/01/1900	current
1832 / 3/4	HU9 HOSE UNION	850495	5013866061103	01/01/1900	current
1832 / 1	HU10 HOSE UNION	850496	5013866061110	01/01/1900	current

CARE & MAINTENANCE

Care

No regular aesthetic care is required for this product

Maintenance

A regular maintenance program is the most efficient method of ensuring longer term operational efficiency of the selected valve. Such a program would need to include a risk assessment and a planned procedure of how the maintenance will be carried out. The possibility of operational limits being exceeded and the potential hazards ensuring must be considered as part of this assessment. This should be implemented to include visual checks on the valve's condition and any development of unforeseen conditions, which could lead to failure. The correct fitting tools and equipment should be used for valve maintenance work. Separate means of draining the pipe work must be provided when carrying out any maintenance to valves. Where there may be any system debris this could be collected and /or filtered by installation of the appropriate protective device.

For further help please contact your local engineer.

If your product is under warranty please contact the Service Support Team on: 0800 1560050

REGULATIONS

Regulations

THE PRESSURE EQUIPMENT DIRECTIVE 97/23/EC and CE MARKING

The Pressure Equipment Regulations 1999 (SI 1999/2001) have now been introduced into United Kingdom law.

Valves with a maximum allowable pressure greater than 0.5 bar are covered by these new Regulations. Valves are categorised according to their maximum working pressure, size and rising level of hazard. The level of hazard varies according to the fluid being carried. Fluids are classified as Group 1, dangerous fluids or Group 2, all other fluids including steam. The Categories designated are SEP (sound engineering practice). Valves up to and including 25mm (1") are designated SEP regardless of the fluid group. Those identified as having increased hazard are Categorised as, I, II, III or IV. All valves designated as SEP do not bear the CE mark nor require a Declaration of Conformity. Categories I, II, III or IV carry the CE mark and require a Declaration of Conformity. Valves classified from the piping chart would not be included in Category IV.

GUARANTEE

Valves and Fittings

Pegler Yorkshire Customcare 5 Year Guarantee - Terms and Conditions

Products are subject to a 5 year guarantee that is between Pegler Yorkshire and the final purchaser of the product.

The guarantee is subject to proof of purchase being supplied.

This guarantee does not affect any statutory rights the consumer may have in law.

The guarantee covers manufacturing or material defects and does not cover parts subject to normal wear and tear.

This product range has been designed for the use of homeowners, domestic and commercial applications and therefore the guarantee is subject to the product being properly selected for their intended service conditions.

The guarantee is not applicable where the product is fitted contrary to the conditions in the fitting instructions.

This is reinforced where valves are covered by the European Pressure Equipment Directive (PED97/23/EC) where Installation, Operating and Maintenance Instructions are supplied with each product and/or carton.

Provided it is installed correctly and receives adequate preventative maintenance it should give years of trouble – free service.

Abusive behaviour and accidental damage to the product are not covered by this guarantee.

The extent of this liability is limited to the cost of the replacement of the defective item and not to fitting or consequential damages.

VALVE SUITABILITY

Product	Steam	Water	Oil	Air	Gas Inert	Gas Condensable	Gas Corrosive	Gas Oxygen
P8700	✓	✓	✓	✓	✓	✓	✓	X
P8500 RED	✓	✓	✓	✓	X	X	X	X
P8500 YELLOW	✓	✓	✓	✓	✓	✓	✓	X
P8300 RED/BLUE	✓	✓	✓	✓	X	X	X	X
P8300 YELLOW	✓	✓	✓	✓	✓	✓	✓	X
P8100	X	✓	✓	✓	X	X	X	X
1065	X	✓	✓	✓	X	X	X	X
1068	✓	✓	✓	✓	X	X	X	X
1072	✓	✓	✓	✓	X	X	X	X
1070/125	✓	✓	✓	✓	X	X	X	X
P81M	✓	✓	✓	✓	X	X	X	X
63	X	✓	✓	✓	X	X	X	X
GMS3	X	✓	✓	✓	X	X	X	X
1029	✓	✓	✓	✓	✓	✓	✓	X
1031	✓	✓	✓	✓	X	X	X	X
1039	✓	✓	✓	✓	X	X	X	X
1060A	✓	✓	✓	✓	X	X	X	X
1062	✓	✓	✓	✓	X	X	X	X
1063	X	✓	✓	✓	X	X	X	X
1064	X	✓	✓	✓	X	X	X	X
1832	X	✓	✓	✓	X	X	X	X
833GM, GM LS	X	✓	✓	✓	X	X	X	X

* Pressure limited to 10 bar for Air & Gas applications. ** Pressure limited to 5 bar for Air applications.

Thread Depths (mm)

Product	1/4"	3/8"	1/2"	3/4"	1"	1.1/4"	1.1/2"	2"	2.1/2"	3"	4"
P8700	11.5	11.9	15.4	16.7	19.4	21.7	21.4	26.0	30.5	33.5	39.5
P8500 RED	11.5	11.9	15.4	16.7	19.4	21.7	21.4	26.0	30.5	33.5	39.5
P8500 YELLOW	11.5	11.9	15.4	16.7	19.4	21.7	21.4	26.0	30.5	33.5	39.5
P8300 RED/BLUE	-	-	-	-	-	-	-	-	-	-	-
P8300 YELLOW	-	-	-	-	-	-	-	-	-	-	-
P8100	-	-	12.7	14.0	16.2	18.5	18.5	22.8	-	-	-
1065	-	-	12.7	14.0	16.1	18.5	18.5	22.8	-	-	-
1068	-	-	15.0	16.3	19.1	21.4	21.4	25.7	30.2	33.3	39.3
1072	-	-	15.0	16.3	19.1	21.4	21.4	25.7	-	-	-
1070/125	11.4	11.4	15.0	16.3	19.1	21.4	21.4	25.7	30.2	33.3	39.3
P81M	-	-	-	-	-	-	-	-	-	-	-
63	-	-	-	-	-	-	-	-	-	-	-
GMS3	-	-	-	-	-	-	-	-	-	-	-
1029	7.5	7.9	9.9	11.1	12.3	14.3	14.3	18.2	19.8	22.6	-
1031	-	-	9.9	11.1	12.3	14.3	14.3	18.2	-	-	-
1039	-	-	9.9	11.1	12.3	14.3	14.3	18.2	-	-	-
1060A	-	-	15.0	16.3	19.1	21.4	21.4	25.7	25.0	33.0	33.0
1062	-	-	15.9	16.7	19.0	-	-	-	-	-	-
1063	-	10.3	12.8	14.2	15.0	15.2	16.4	17.2	19.8	26.0	26.6
1064	-	10.3	12.8	14.2	15.0	15.2	16.4	17.2	19.8	26.0	26.6
1832	-	-	-	-	-	-	-	-	-	-	-
833GM, GM LS	-	-	-	-	-	-	-	-	-	-	-

OPERATIONAL LIMITS

Product	PN	Non-Shock Pressure @ Temp. Range	Non-Shock Pressure @ Max. Range
P8700	40*	40 Bar - 10°C to 110°C	10 Bar at 180°C
P8500 RED	25	25 Bar - 10°C to 100°C	16.5 Bar at 150°C
P8500 YELLOW	25*	25 Bar - 10°C to 100°C	16.5 Bar at 150°C
P8300 RED/BLUE	16	16 Bar - 10°C to 30°C	5 Bar at 120°C
P8300 YELLOW	16*	16 Bar - 10°C to 30°C	5 Bar at 120°C
P8100	25	25 Bar - 10°C to 100°C	4 Bar at 120°C
1065	17.5	17.5 Bar - 0°C to 25°C	17.5 Bar at 93°C
1068	20	20 Bar - 10°C to 100°C	9 Bar at 180°C
1072	32	32 Bar - 10°C to 100°C	14 Bar at 198°C
1070/125	20	20 Bar - 10°C to 100°C	9 Bar at 180°C
P81M	16	20 Bar - 10°C to 100°C	9 Bar at 180°C
63	16	16 Bar - 10°C to 30°C	5 Bar at 120°C
GMS3	16	16 Bar - 10°C to 30°C	5 Bar at 120°C
1029	32*	32 Bar - 10°C to 100°C	14 Bar at 198°C
1031	32	32 Bar - 10°C to 100°C	14 Bar at 198°C
1039	32	32 Bar - 10°C to 100°C	14 Bar at 198°C
1060A	25	25 Bar - 10°C to 100°C	10.5 Bar at 186°C
1062	25	25 Bar - 10°C to 100°C	10.5 Bar at 186°C
1063	8 - 12	0°C to 90°C	90°C
1064	8 - 12	0°C to 90°C	90°C
1832	10	10 Bar - 0°C to 120°C	10 Bar at 120°C
833GM, GM LS	10	20 Bar - 10°C to 100°C	13 Bar at 120°C

* 10 bar for Gas

PED Categorisation Table

Product	1/4"	3/8"	1/2"	3/4"	1"	1.1/4"	1.1/2"	2"	2.1/2"	3"	4"
P8700	S.E.P	S.E.P	S.E.P	S.E.P	S.E.P	Cat 1	Cat 1	Cat 1	Cat 1	Cat 1	Cat 1
P8500 RED	S.E.P	S.E.P	S.E.P	S.E.P	S.E.P	S.E.P	S.E.P	S.E.P	S.E.P	S.E.P	S.E.P
P8500 YELLOW	S.E.P	S.E.P	S.E.P	S.E.P	S.E.P	Cat 1	Cat 1	Cat 1	Cat 1	Cat 1	Cat 1
P8300 RED/BLUE	-	-	-	-	-	-	-	-	-	-	-
P8300 YELLOW	-	-	-	-	-	-	-	-	-	-	-
P8100	-	-	-	-	-	-	-	-	-	-	-
1065	-	-	-	-	-	-	-	-	-	-	-
1068	-	-	-	-	-	-	-	-	-	-	-
1072	-	-	-	-	-	-	-	-	-	-	-
1070/125	S.E.P	S.E.P	S.E.P	S.E.P	S.E.P	S.E.P	S.E.P	S.E.P	S.E.P	S.E.P	S.E.P
P81M	-	-	-	-	-	-	-	-	-	-	-
63	-	-	-	-	-	-	-	-	-	-	-
GMS3	-	-	-	-	-	-	-	-	-	-	-
1029	S.E.P	S.E.P	S.E.P	S.E.P	S.E.P	Cat 1	Cat 1	Cat 1	Cat 2	Cat 2	-
1031	-	-	-	-	-	-	-	-	-	-	-
1039	-	-	-	-	-	-	-	-	-	-	-
1060A	-	-	-	-	-	-	-	-	-	-	-
1062	-	-	-	-	-	-	-	-	-	-	-
1063	-	-	-	-	-	-	-	-	-	-	-
1064	-	-	-	-	-	-	-	-	-	-	-
1832	-	-	-	-	-	-	-	-	-	-	-
833GM, GM LS	-	-	-	-	-	-	-	-	-	-	-

Category 1 and Category 2 carry the CE mark