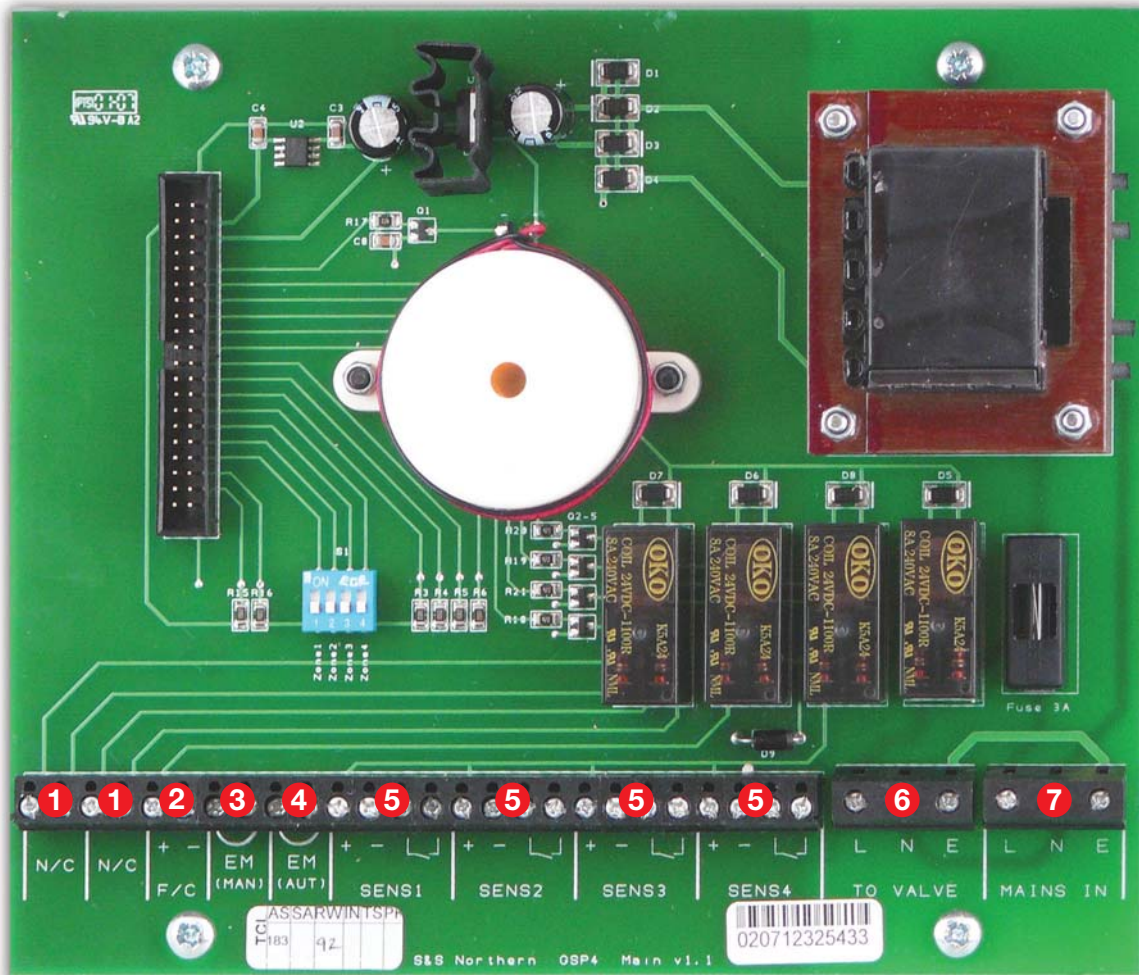


# MERLIN RANGE



## Merlin GSP4 Wiring Diagram

- 1 Volt free normally closed contact opens in alarm
- 2 24v output when in alarm for emergency beacon
- 3 Remote Emergency Stop Input
- 4 Input for Thermal Links (normally closed)
- 5 Terminals for detectors - (use 4 core wire)
- 6 230v AC output to valve
- 7 230v AC Supply

## Merlin GSP4 Dimensions

- Height** 180 mm
- Length** 255 mm
- Depth** 64 mm