

TECHNICAL DATASHEET

TAP REVIVERS

TAP REVIVER 1/2" & 3/4" SINGLE LEVER

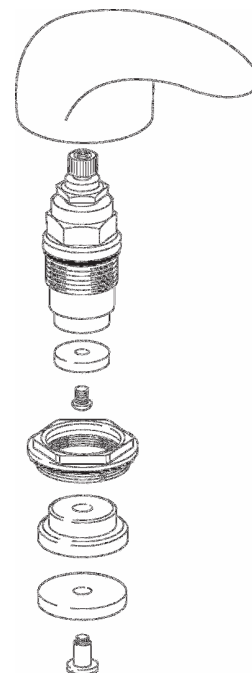
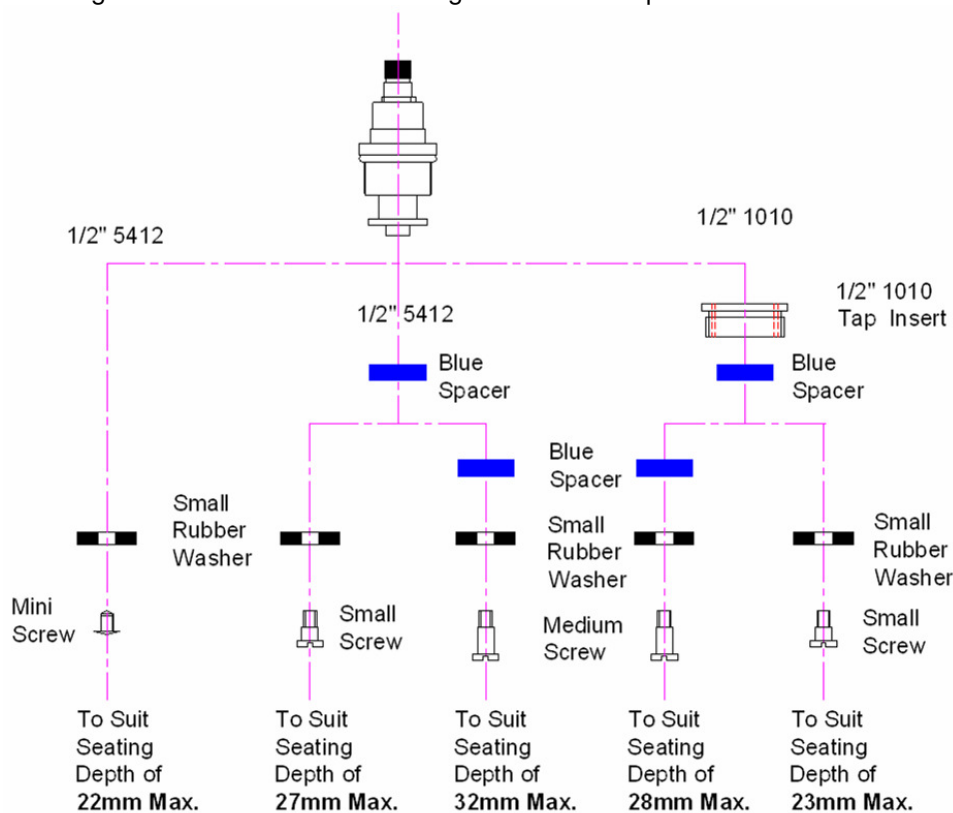
Product Specification

Product Code:	R 1/2 SL & R 3/4 SL
Finishes:	Chrome plated
Product Type:	Contemporary
Valve Type:	1/2" & 3/4" rapid action (approx. 90° turn) compression valve
Supply:	Suitable for use with all plumbing systems



Additional Information

- 1/2" Reviver packs suitable for use with most 1/2" 5412 and 1/2" 1010 taps
- 3/4" Reviver packs suitable for use with most 3/4" 5412 and 3/4" 1010 taps
- image below shows different configurations of components to meet various seating depths



Technical Advice: For further information please call 0844 701 6273 or email customercare@bristan.com.
Guarantee: 5 years covering manufacturing faults.