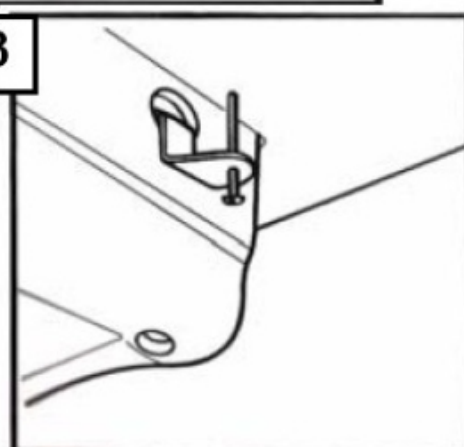
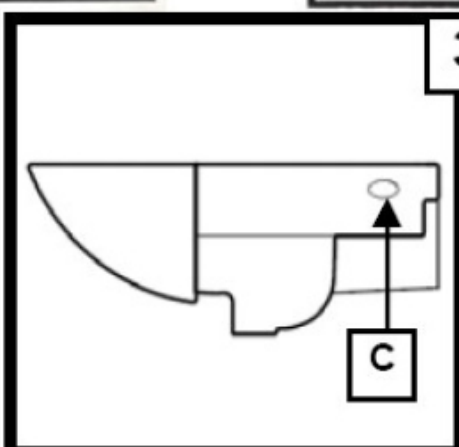
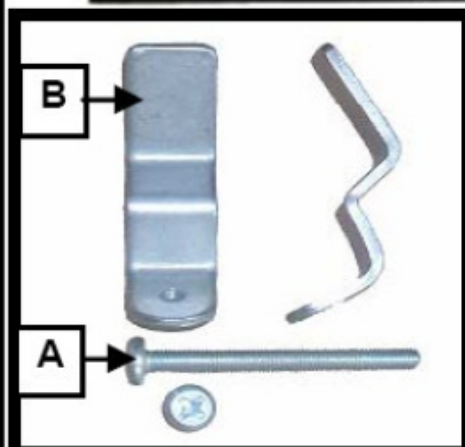
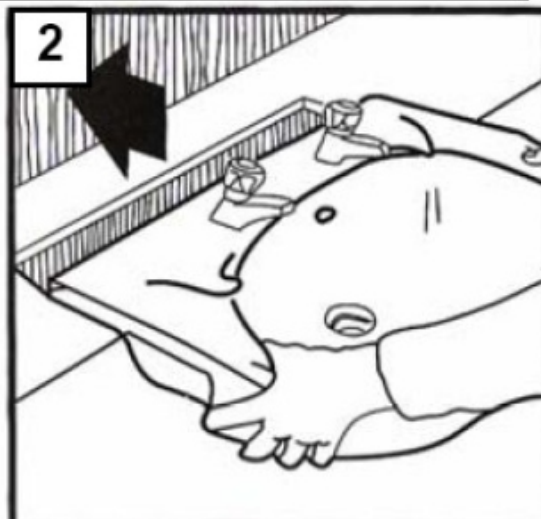
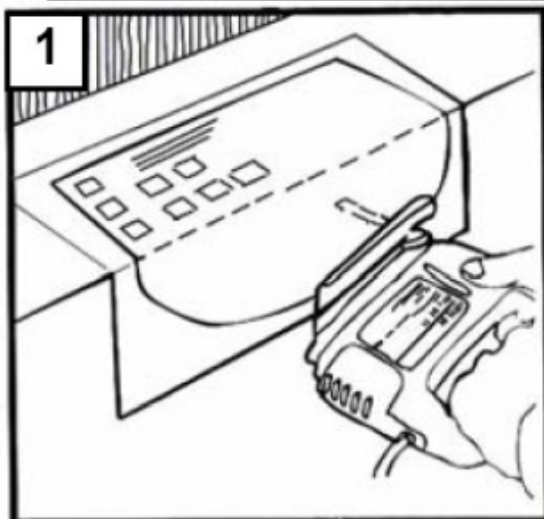


Advice

Remove all protection from ware and check for surface damage or defects as no responsibility can be accepted for obvious defects after installation

FC100SET30ZZ00

Wash Basin Semi Recessed Fitting Instruction



1-Cutting cabinet by saw after add cut-out template.

2-Screw "A" must be fitted with galvanized bracket " B " before installation in basin bracket holes " C ".

3-Screw tighten by screwdriver until touching the cabinet.

N.B : The fixing brackets are designed for work top between 15 and 40 mm thickness.

(FI SEMI BASIN)

(REV D2)

CONTACT DETAILS

If you require further assistance please contact Heritage Sales and

Technical Enquiries:

Sales: 0844 701 8501

Technical: 0844 701 8503

Email: technical@heritagebathrooms.com

Website: www.heritagebathrooms.com