

# AUTOMATIC BY-PASS VALVE

## FEATURES

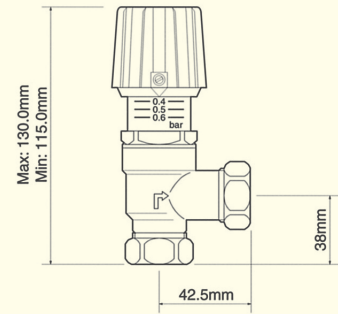
The Myson Auto By-Pass valve is designed for use in domestic central heating systems.

Its purpose is to maintain constant pump pressure within the system.

The advantages of installing this valve are as follows:

1. Ensures minimum water flow rates through the boiler.
2. Reduces system noise associated with high pump pressures.
3. Eliminates the need to fit an uncontrolled radiator to act as a system by-pass.
4. Increases efficiency.
5. Aids the operation of Thermostatic Radiator Valves.

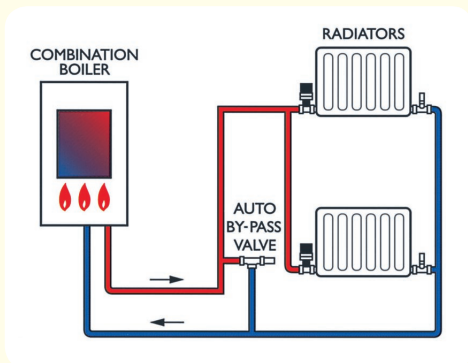
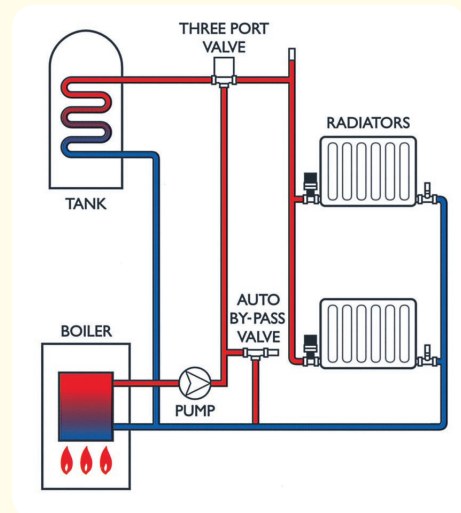
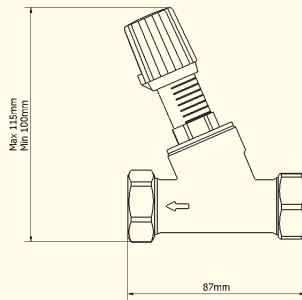
The Auto By-Pass valve automatically opens and closes depending on system load. When the Thermostatic Radiator Valves are opened and calling for heat the Auto By-Pass valve remains closed. This allows the full output of the boiler and pump to circulate through the system. As sections of the heating system close down the Auto By-Pass valve opens to allow water to flow through the by-pass.



## SPECIFICATION

Max Static Pressure	10 BAR
Temperature	110°C Max
Setting Range	0.1 - 0.6 BAR
Connections	22mm Compression

Auto By-Pass valves	ORDER CODE
22mm angle	ABV22
22mm straight	ABV22S



Install the Auto By-Pass valve after the circulating pump between the flow and return pipes (as shown). Allow sufficient access for adjusting the pressure setting. Ensure that the water flow follows the direction arrow on the valve body. The valve may be fitted in a horizontal, vertical or inclined orientation. Fit the valve body using the 22mm compression nuts provided. Take care not to over tighten.