

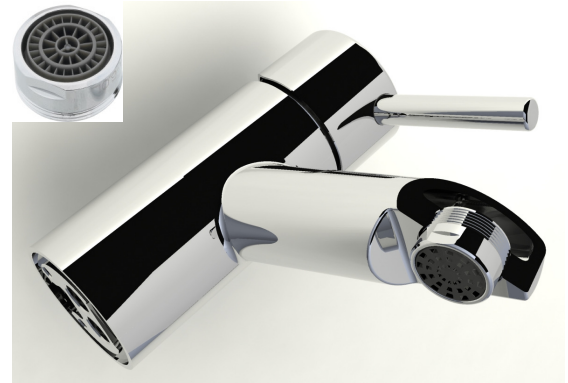
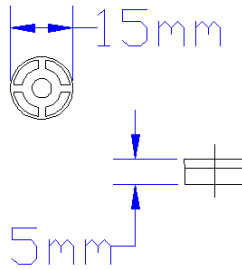
TECHNICAL DATASHEET

FLOW LIMITERS

FLOW LIMITERS FOR TAPS & MIXERS

Flow limiters can be used with appropriate products to improve water efficiency and can assist with meeting the requirements of Part G of the Building Regulations and the code for Sustainable Homes.

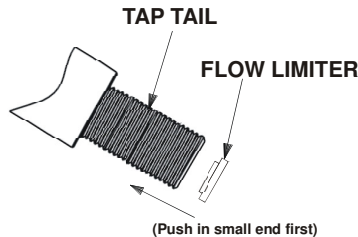
Product Specification



FLOW LIMITERS THAT FIT IN TAP TAILS		
Colour	Flow Rate Limited to:	Product Code
Pink	1 litres per minute	ECO TAP1
Olive	2 litres per minute	ECO TAP2
Brown	3 litres per minute	ECO TAP3
Grey	4 litres per minute	ECO TAP4
Yellow	5 litres per minute	ECO TAP5
Black	6 litres per minute	ECO TAP6

FLOW LIMITING FLOW STRAIGHTENERS (WITH MALE THREAD) THAT FIT TAP SPOUTS		
Colour	Flow Rate Limited to:	Product Code
Blue	3.5 litres per minute	ECO BAS3.5
Pink	4.5 litres per minute	ECO BAS4.5
Black	6 litres per minute	ECO BAS6

FLOW LIMITING SPRAY TYPE FLOW STRAIGHTENER (WITH FEMALE THREAD) THAT FIT TAP SPOUTS		
Colour	Flow Rate Limited to:	Product Code
Lime Green	3.5 litres per minute	ECO FBAS3.5



Additional Information

- Tap tail type flow limiters are suitable for most Bristan basin, pillar taps, basin and sink mixers.
- Operating pressure range – Min. 1.0 bar Max. 5.0 bar.
- All flow limiters accurate +/- 10%.
- Flow limiting flow straighteners aerates the water for a softer non-splashing flow.
- Flow limiting flow straighteners can be easily retro fitted in tap spout (dependent on tap/mixer model).

FLOW LIMITING SPRAY TYPE FLOW STRAIGHTENERS THAT FIT TAP SPOUTS		
Colour	Flow Rate Limited to:	Product Code
Lime Green	1.8 litres per minute	ECO SPBAS1.8
Dark Blue	3.5 litres per minute	ECO SPBAS3.5



Compliance/Approvals

WRAS: All flow limiters detailed Manufactured using WRAS approved materials.

Bristan, Birch Coppice Business Park, Dordon, Tamworth, B78 15G
 Telephone: 0844 701 6274 Facsimile: 0844 701 6275
 Web Site: www.bristan.com Email: enquire@bristan.com



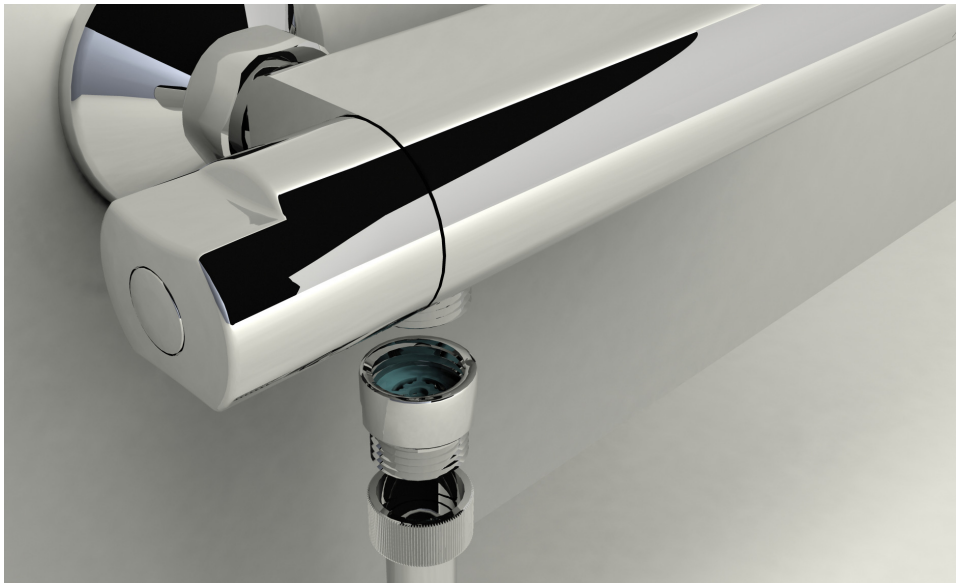


FLOW LIMITERS

FLOW LIMITERS FOR SHOWERS

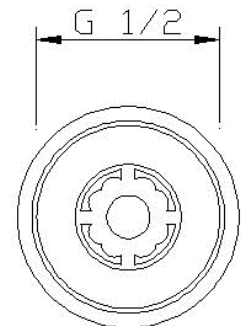
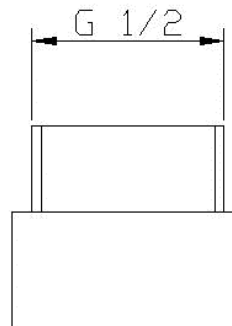
Flow limiters can be used with appropriate products to improve water efficiency and can assist with meeting the requirements of Part G of the Building Regulations and the code for Sustainable Homes.

Product Specification



FLOW LIMITERS THAT FIT BETWEEN MIXER & SHOWER HANDSET

Colour	Flow Rate Limited to:	Product Code
Grey	4 litres per minute	ECO SHW 04
Yellow	5 litres per minute	ECO SHW 05
Black	6 litres per minute	ECO SHW 06
Green	7 litres per minute	ECO SHW 07
White	8 litres per minute	ECO SHW 08
Blue	10 litres per minute	ECO SHW 10
Pink	14 litres per minute	ECO SHW 14



Additional Information

- Suitable for all Bristan showers.
- Limiters can be easily retro fitted between a mixer body/shower valve outlet connection and the shower hose, or
- Between shower hose and handset.
- Simply screw in place.
- Operating pressure range – Min. 1.0 bar Max. 5.0 bar.
- All limiters accurate +/- 10%.

Technical Advice: For further information please call **0844 7016273**

Compliance/Approvals

WRAS: All flow limiters detailed Manufactured using WRAS approved materials.

Bristan, Birch Coppice Business Park, Dordon, Tamworth, B78 15G
 Telephone: 0844 701 6274 Facsimile: 0844 701 6275
 Web Site: www.bristan.com Email: enquire@bristan.com

