



COMMERCIAL BRASSWARE

Uniclass	
L72511	
CI/SfB	
(53.9)	X



INNOVATIVE, SMART
NEW SOLUTIONS

Twyford
FOR LIFE



SMARTER. MORE HYGIENIC, SAFE, DURABLE. AND WATER EFFICIENT. VERSATILE BRASSWARE SOLUTIONS FROM TWYFORD BATHROOMS.

With these outstanding new Twyford ranges, commercial brassware takes a major step forward. Setting new standards in design, with stylish looks and smart innovations. Making life easier for specifiers, with versatile products that do everything you're looking for - and more. Tough and durable, but easy to use. Ultra hygienic. Safer. And far more water efficient - complying in many cases with the latest BREEAM WAT 1 assessment criteria by limiting water flow in taps to 6 litres per minute and 9 litres per minute in showers.

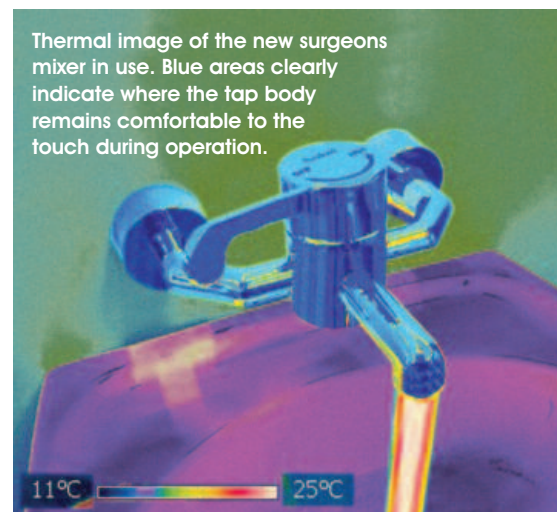
Whatever the application, you've got the complete solution every time - with new and better Twyford brassware.

FOR EVERY COMMERCIAL APPLICATION

EDUCATION HEALTHCARE HOTELS & LEISURE SECURITY SPECIAL NEEDS
EDUCATION HEALTHCARE HOTELS & LEISURE SECURITY SPECIAL NEEDS
EDUCATION HEALTHCARE HOTELS & LEISURE SECURITY SPECIAL NEEDS
EDUCATION HEALTHCARE HOTELS & LEISURE SECURITY SPECIAL NEEDS



Thermal image of the new surgeons mixer in use. Blue areas clearly indicate where the tap body remains comfortable to the touch during operation.



Wall mounted

SOLA SURGEONS MIXER

SF1056CP Sola wall mounted thermostatic surgeons mixer
SF1057CP Sola deck mounted thermostatic surgeons mixer

Using leading edge insulation technology the whole tap body stays comfortable to the touch - no matter how hot the water runs.

KEY FEATURES

- Insulated tap body remains comfortable to touch during use making operation extra safe
- Specially designed for the healthcare sector
- Deck mounted or wall mounted options available
- TMV3 approved

ACCESSORY

SF1000XX Flushing kit for surgeons tap
Ensures hygienic and efficient installation of the mixer tap

APPLICATIONS

- Healthcare
- Commercial

APPROVALS

TMV3, HTM64 - TB H2a,
NHS D08, W.R.A.S.



Deck mounted

TAPS AND MIXERS





SOLA VANDAL RESISTANT SHOWER HEAD

SF1253CP

KEY FEATURES

- Durable and resistant to rough treatment
- Removable flow regulator fitted for BREEAM compliance and limiting water flow to 9 litres per minute

APPLICATIONS

- Commercial
- Education
- Healthcare
- Hotel & leisure
- Security
- Special needs

APPROVALS
W.R.A.S.



SOLA SHOWER RAIL, HOSE & HEAD

SF1251CP

KEY FEATURES

- Easy to fit
- Removable flow regulator fitted for BREEAM compliance and limiting water flow to 9 litres per minute
- Suitable for use with a range of shower valves

APPLICATIONS

- Commercial
- Education
- Healthcare
- Hotel & leisure

APPROVALS
W.R.A.S.



SOLA THERMOSTATIC TMV3 MONOBLOC TAP

SF1053CP Fitted with copper tails
SF1054CP Fitted with flexi hoses

KEY FEATURES



- TMV3 approved
- Removable flow regulator fitted for BREEAM compliance and limiting water flow to 6 litres per minute
- Connection options of copper tails or flexible hoses
- Easy to use

APPLICATIONS

- Commercial
- Education
- Healthcare
- Hotel & leisure
- Security
- Special needs

APPROVALS
TMV3, HTM64 - TP6 compliant, NHS D08, W.R.A.S., BS7942: 2000

ACCESSORY
SF1050XX Stainless steel sink adaptor to be used with SF1053CP and SF1054CP



SOLA THERMOSTATIC CONCEALED & EXPOSED SHOWER VALVES

SF1151CP Concealed valve
SF1152CP Exposed valve

KEY FEATURES

- TMV3 approved
- Easy to use
- Range of fittings available

APPLICATIONS

- Commercial
- Education
- Healthcare
- Hotel & leisure
- Security
- Special needs

APPROVALS
TMV3, HTM64 - TM1 W.R.A.S.



SOLA 1/2" NON CONCUSSIVE TAPS

SF2101CP Tap (single), hot and cold indice
SF2102CP Taps (pair)

KEY FEATURES

- Water saving operation
- Easy to use for less-abled

APPLICATIONS

- Commercial
- Education
- Healthcare
- Hotel & leisure
- Security
- Special needs

APPROVALS
W.R.A.S.



SOLA NON CONCUSSIVE BIB TAP

SF2153CP Single tap




KEY FEATURES

- Water saving operation
- Easy to use for less-abled

APPLICATIONS

- Commercial
- Education
- Healthcare
- Hotel & leisure

APPROVALS
W.R.A.S. pending



THERMOSTATIC MIXING VALVES

SF1337XX 15mm mixing valve
SF1338XX 22mm mixing valve

KEY FEATURES

- TMV2 & TMV3 approved
- For 15mm single applications fitting

KEY FEATURES

- TMV2 & TMV3 approved
- For 22mm single applications fitting

APPLICATIONS

- Commercial
- Education
- Healthcare
- Hotel & leisure
- Security
- Special needs

APPROVALS
W.R.A.S., TMV2, TMV3

TAPS AND MIXERS



USING WATER EFFICIENT BRASSWARE TO GAIN BREEAM CREDITS





SOLA INFRA RED MONOBLOC (BATTERY OPERATED)

SF2601CP

KEY FEATURES

- Modern infra red operation
- Elegant design
- Removable flow regulator fitted for BREEAM compliance and limiting water flow to 6 litres per minute
- Battery operated with mains conversion kit available

APPLICATIONS

- Commercial
- Education
- Hotel & leisure
- Security
- Special needs

APPROVALS

W.R.A.S. pending

ACCESSORY

SF2600XX 240v mains conversion kit for SF2601CP



SOLA TOUCH TAP MONOBLOC

SF2105CP

KEY FEATURES

- Easy to use for less-abled
- Ideal for child use
- Removable flow regulator fitted for BREEAM compliance and limiting water flow to 6 litres per minute

APPLICATIONS

- Commercial
- Education
- Hotel & leisure
- Healthcare
- Security
- Special needs

APPROVALS

W.R.A.S.



SOLA 1/2" BIB TAPS LEVER (PAIR)

SF2301CP

KEY FEATURES

- Easy to use for less-abled

APPLICATIONS

- Commercial
- Education
- Hotel & leisure
- Healthcare
- Security
- Special needs

APPROVALS

HTM 64 code TBH1, KIWA

ACCESSORIES

SF2704CP 6" long levers (pair)

SF6006XX Basin tap flow regulator 6 litre/min (pair)



SOLA CONCEALED WALL MOUNTED BATH FILLER

SF1066CP

KEY FEATURES

- Easy to use for less-abled

APPLICATIONS

- Commercial
- Hotel & leisure
- Healthcare
- Special needs

APPROVALS

W.R.A.S.



SOLA 1/2" HIGH NECK LEVER TAPS (PAIR)

SF2403CP

KEY FEATURES

- Easy to use for less-abled

APPLICATIONS

- Commercial
- Education
- Hotel & leisure
- Healthcare
- Special needs

APPROVALS

HTM 64 code TP3 & KIWA

ACCESSORIES

SF2704CP 6" long levers (pair)

SF6006XX Basin tap flow regulator 6 litre/min (pair)



SOLA 1/2" LEVER ACTION TAPS (PAIR)

SF2401CP

KEY FEATURES

- Easy to use for less-abled

APPLICATIONS

- Commercial
- Education
- Hotel & leisure
- Healthcare
- Special needs

APPROVALS

HTM 64 code TP5, W.R.A.S. & KIWA

ACCESSORIES

SF2704CP 6" long levers (pair)

SF6006XX Basin tap flow regulator 6 litre/min (pair)



SOLA TEMPERATURE CONTROLLED NON-CONCUSSIVE MONOBLOC

SF2104CP

KEY FEATURES

- Water saving
- Temperature controlled
- Easy to use

APPLICATIONS

- Commercial
- Education
- Hotel & leisure
- Special needs

APPROVALS

HTM 64 code TPP1, W.R.A.S. pending

COMMERCIAL SECTOR	SUB TYPE	ASSESSMENT APPROACH	AVAILABLE CREDITS		
			1	2	3
INDUSTRIAL		Total building approach cubic metres - WCs/urinals/taps/showers. Excludes kitchen taps, cleaners sinks & external taps	4.5 to 5.5 cubic metres per person per year	1.5 to 4.4 cubic metres per person per year	Below 1.5 cubic metres per person per year
			Water efficient brassware can contribute to these credits		
OFFICES		Total building approach cubic metres - WCs/urinals/taps/showers. Excludes kitchen taps, cleaners sinks & external taps	4.5 to 5.5 cubic metres per person per year	1.5 to 4.4 cubic metres per person per year	Below 1.5 cubic metres per person per year
			Water efficient brassware can contribute to these credits		
EDUCATION	Schools (inc Secondary Schools with Sixth Form)	Total building approach cubic metres - WCs/urinals/taps/showers. Excludes kitchen taps, cleaners sinks & external taps	4.5 to 5.5 cubic metres per person per year	1.5 to 4.4 cubic metres per person per year	Below 1.5 cubic metres per person per year
			Water efficient brassware can contribute to these credits		
	Further Education	Individual product. Excludes kitchen taps, cleaners sinks & external taps 3rd credit not linked to 1 & 2	Max 4.5 litre WCs. Dual flush must be clearly marked	Max 3 litre WCs or delayed inlet	2 highest water savers from:- 1. All taps less than 6 litre/min @ 0.3MPa or timed/sensor type 2. All showers less than 9 litre/min @ 0.3MPa 3. Urinals with presence detectors or low flush/waterless
COURTS		Individual product. Excludes kitchen taps, cleaners sinks & external taps 3rd credit not linked to 1 & 2	Max 4.5 litre WCs. Dual flush must be clearly marked	Max 3 litre WCs or delayed inlet	2 highest water savers from:- 1. All taps less than 6 litre/min @ 0.3MPa or timed/sensor type 2. All showers less than 9 litre/min @ 0.3MPa 3. Urinals with presence detectors or low flush/waterless
RETAIL		Individual product. Excludes kitchen taps, cleaners sinks & external taps 3rd credit not linked to 1 & 2	Max 4.5 litre WCs. Dual flush must be clearly marked	Max 3 litre WCs or delayed inlet	2 highest water savers from:- 1. All taps less than 6 litre/min @ 0.3MPa or timed/sensor type 2. All showers less than 9 litre/min @ 0.3MPa 3. Urinals with presence detectors or low flush/waterless
HEALTHCARE		Individual product. Excludes scrub facilities, kitchen taps, cleaners sinks, external taps or any areas specified by design team 3rd credit linked to 1 & 2	Max 4.5 litre WCs. Dual flush must be clearly marked. Inclusive operation - lever, special lever, electronics, etc.	All taps less than 6 litre/min @ 0.3MPa. Must be either timed or sensor type	2 highest water savers from:- 1. All taps less than 6 litre/min @ 0.3MPa or timed/sensor type 2. All showers less than 9 litre/min @ 0.3MPa 3. Urinals with presence detectors or low flush/waterless 4. Bath with 100 litres to overflow with auto stop on bath fill
PRISONS		Individual product. Excludes kitchen taps, cleaners sinks & external taps. 3rd credit not linked to 1 & 2. Considerations similar to Healthcare to be taken into account where applicable	Max 4.5 litre WCs. Dual flush must be clearly marked	Max 3 litre WCs or delayed inlet	2 highest water savers from:- 1. All taps less than 6 litre/min @ 0.3MPa or timed/sensor type 2. All showers less than 9 litre/min @ 0.3MPa 3. Urinals with presence detectors or low flush/waterless 4. Bath with 100 litres to overflow with auto stop on bath fill
DATA CENTRES		Individual product. 2nd and 3rd credits not linked to 1st credit	Max 4.5 litre WCs. Dual flush must be clearly marked and 2 highest water savers from:- 1. All taps less than 6 litre/min @ 0.3MPa or timed/sensor type 2. All showers less than 9 litre/min @ 0.3MPa 3. Urinals with presence detectors or low flush/waterless	A technology/ strategy is adopted which demonstrates a ≥20% reduction in the potable water consumption	A technology/strategy is adopted which demonstrates a ≥40% reduction in the potable water consumption

BREEAM = Building Research Environmental Evaluation Method

For full specifications and dimensions see www.twyfordbathrooms.com

For full specifications and dimensions see www.twyfordbathrooms.com
For latest prices and delivery to your door visit MyTub Ltd - www.mytub.co.uk - info@mytub.co.uk 0844 556 1818 

FOR FURTHER INFORMATION ON THESE
AND OTHER TWYFORD PRODUCTS

see **twyfordbathrooms.com**,
call **01270 879777** or email
twyford.sales@twyfordbathrooms.com

or create a specification at
www.specmasteronline.com



Twyford
bathrooms

Registered office: Lawton Road, Alsager, Stoke-on-Trent ST7 2DF, UK

T: +44(0) 1270 879777 F: +44(0) 1270 873864

www.twyfordbathrooms.com

Part of the Sanitec Group

Ref: TWNY0061/1

Whilst every care has been taken to ensure that the information included in this document was accurate at the time of printing, we reserve the right to change product specifications at any time without prior notice. The photographs reproduced in this publication are within the constraints of the printing process and are not to be used for matching purposes. All photographs are used for approximate representation only and may not show the actual products on offer. E&OE.