



TLM ROOM THERMOSTATS (Concealed setting)

TLM 2402 TLM 2453 TLM 2661

Thermostat position: To be placed at a height of 1.52M (5ft.) from the floor.

Do not position on an outside wall, above a radiator, next to a door, or in direct sunlight.

For fixed wiring only

warning

This control must be earthed using the earth screws on the backplate. Disconnect mains supply before fitting unit to backplate, or removing cover. A switch having a contact separation of at least 3mm in all poles must be incorporated in the fixed wiring as a means of fully disconnecting the mains supply.

FIXING

1. A metal backplate is supplied for direct mounting to the wall, or to a one gang conduit box. Conforming to BS4662:1970 (1989). Fit directly to wall using screws and fixings, or screw onto conduit box.
2. Loosen screws top and bottom of thermostat, remove main cover, remove knob and swing terminal cover open.
3. Route wires through back of thermostat and offer thermostat up to backplate. Secure to backplate using two captive screws.
4. Connect wires to thermostat in accordance with the relevant wiring diagram shown overleaf and to the current I.E.E. regulations.
5. To set temperature, turn scaleplate until desired temperature aligns with the mark on the moulding.
6. Reposition terminal cover and main cover. Secure by tightening the two retaining screws.
7. Remove protective film from cover.
8. Before connecting to the mains supply, please ensure that an appropriate fuse is fitted to the circuit

When the control is operational and set to a safe level, it can be made tamperproof by fitting the "SNAP-OFF) hex headed screws.

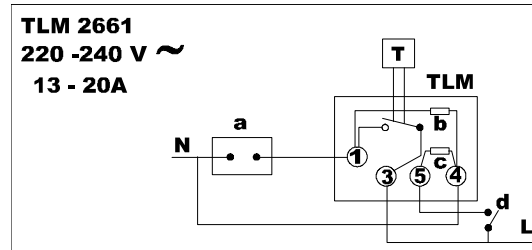
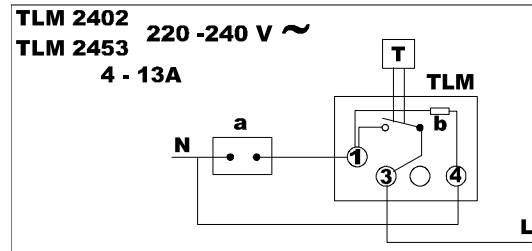
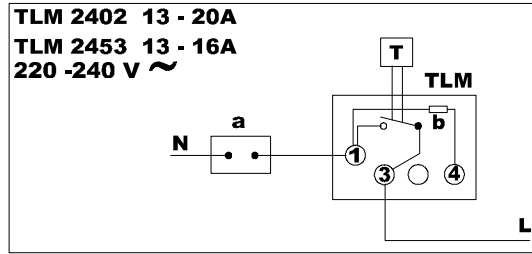
In line with a policy of continuous product improvement, Sunvic Controls Ltd. reserve the right to change the specification, design and materials of the product without prior notice.

WARNING

The cover must not be removed unless the thermostat is isolated from the electricity supply

Interference with sealed parts renders guarantee void.

Installation leaflet LE0213/0006/issue0 June 98



| | |
|---|--|
| a | Load (Resistive) |
| b | Shunt accelerator heater |
| c | Temperature set-back heater |
| d | Temperature set-back switch |

TLM 2402_2453_2661_Diag