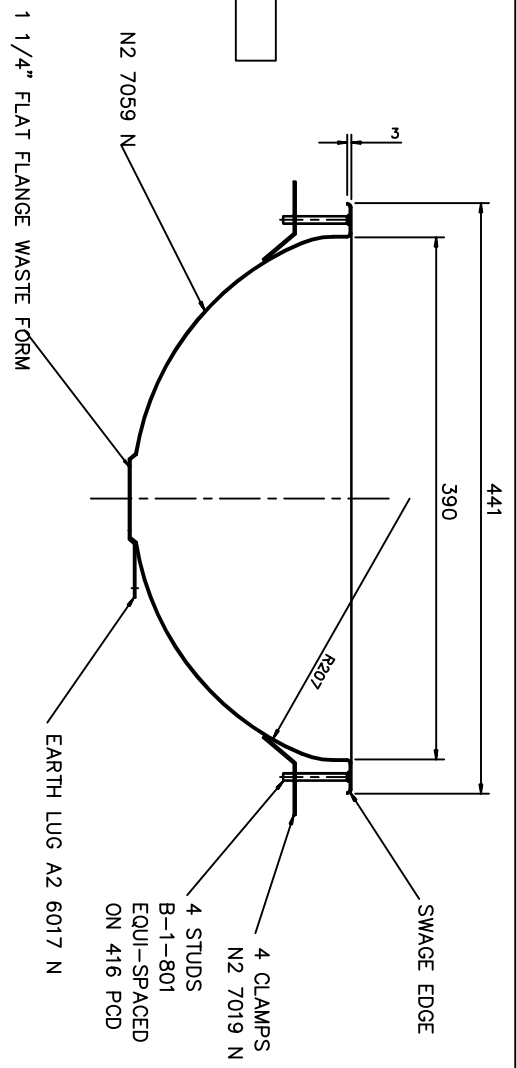
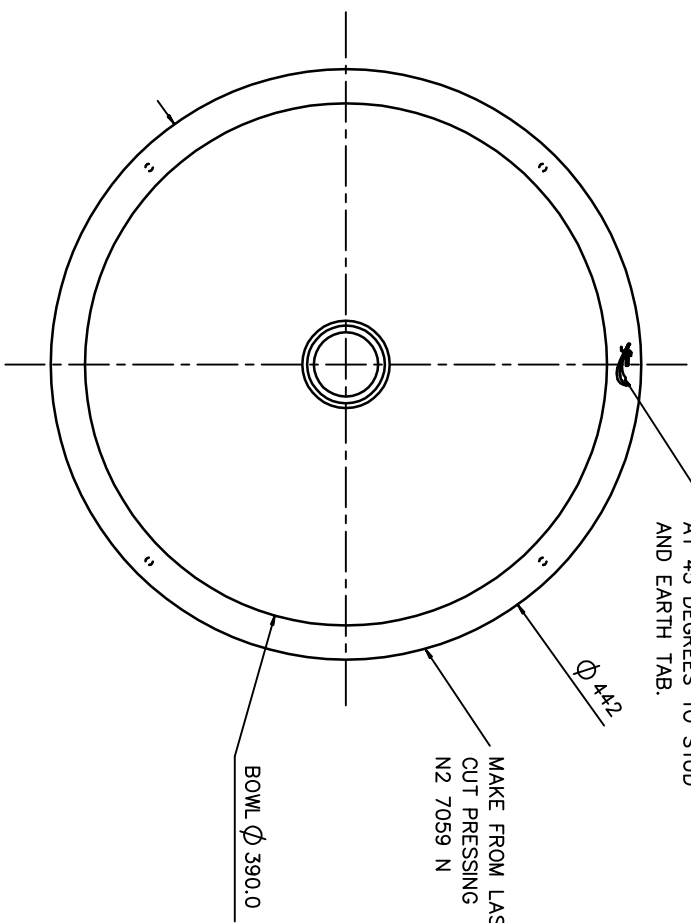


B-1-628	FIXING INSTRUCTIONS	1-OFF
B-1-007	CARE AND MAINTENANCE INST.	1-OFF
B-1-174	WASH YOUR HANDS LABEL	1-OFF
B-1-319	M6 WING NUTS	4-OFF
N2 7019	FLANGE CLAMP PLATES	4-OFF
A2 6017	EARTH LUG	1-OFF
B-1-801	M6 X 50 mm STUDS	4-OFF
N2 7059	LASER CUT AND FORMED BOWL	1-OFF



ALL 240 GRIT FINISH



WOLSELEY CATALOGUE  
PRODUCT No. G73830

DATE OF ISSUE: . . . . .  
NO. OF COPIES ISSUED: . . . . .  
ISSUED TO: -

**THIS PRINT MUST NOT BE COPIED FROM THE DRAWING OFFICE ONLY**

**SPECIFICATION**

**MATERIAL-**  
1.2 THK GRADE 304 STAINLESS STEEL  
2.0 240 GRIT FINISH & POLYURETHANE COATED  
TO BS 1449 PT2 1983

**PATTERNS VIS**  
SHEET ✓  
TEXT ✓  
DIMNS ✓  
V1 ✓  
V2 ✓  
V3 ✓  
V4 ✓

**WORK TO DIMENSIONS**  
ALL DIMNS IN mm  
DO NOT SCALE  
IF IN DOUBT ASK  
UNTOLERANCED DIMNS SURFACE FINISH  
TO BE WITHIN -  
+2.0 BRIGHT POLISHED

**REMOVE ALL BURRS AND SHARP EDGES**

REV	NO	DESCRIPTION	DATE	SIGNED	CHECKED
A	1	ISSUED FOR PRODUCTION			
B	1	ISSUED FROM CHANGED TO 240 GRIT			

**TITLE**  
WOLSELEY CENTERS SARACEN  
390 INSET HAND WASH BASIN

REFERENCE DRAWINGS

© COPYRIGHT © W. & G. SISSONS LTD.

This drawing must not be copied without the written permission of W. & G. Sissons Ltd. It is to be used for manufacturing purposes only.

DATE: 18.11.03  
DRAWN: DAVID ORR  
CHECKED: J. A.  
DRAWING No: N2 0059 N  
REV: B

WORKS ORDER No

**SISSONS**  
a FRANKIE Company

W. & G. SISSONS LTD.  
Carmichael Road  
Sheepbridge  
Dumfrieshire  
PA2 6JG  
Tel: 01296 651250  
Fax: 01296 651259  
S41 76B

©-Trade: WPC's International  
www.wpc-international.co.uk  
Tel: 01296 651250  
Fax: 01296 651259