



## Concept Freedom Ensuite Bathroom Pack with 60cm Basin & Raised Height Standard Projection Back-to-wall WC

### Illustrated

**S6403** Concept Freedom ensuite bathroom pack with 60cm basin & raised height standard projection back-to-wall WC

### Configuration options

#### Material

Chrome Plated Metal & Vitreous China

#### Weights

S6403 82.40KG

#### Colours

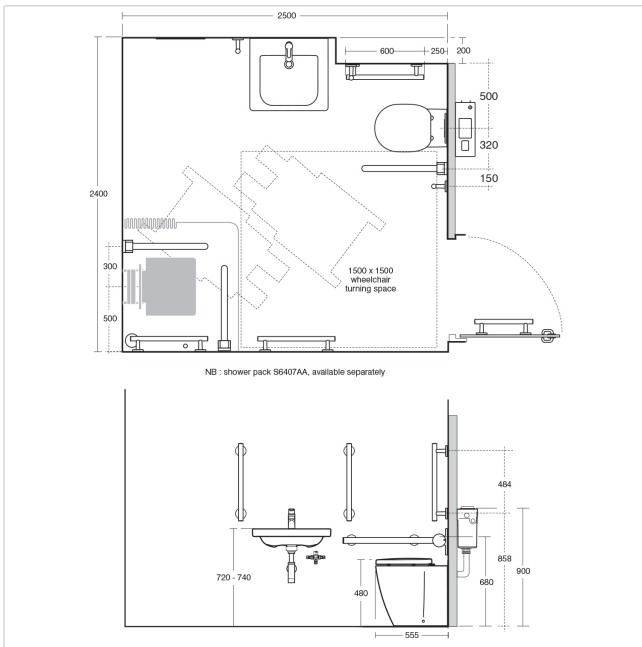
Chrome finish (AA)

#### Special Notes

Supplied with layout drawings, detailing the fixing positions necessary for DOC M compliance

#### Designer

Robin Levien, RDI



### Frequently used applications

General Healthcare  
Residential

Hotels



Tel: 0870 122 8822  
Fax: 0870 122 8282  
Email: [info@idealspec.co.uk](mailto:info@idealspec.co.uk)  
Web: [www.idealspec.co.uk](http://www.idealspec.co.uk)

