

## AFTERCARE INSTRUCTIONS

Your fitting has a high quality finish and should be treated with care to preserve the visible surfaces. All surface finishes will wear if not cleaned correctly, the only safe way to clean your mixer is to wipe with a soft damp cloth. Stains can be removed using washing up liquid. All bath cleaning powders and liquids will damage the surface of your fitting even the non-scratch cleaners.

## GUARANTEE

All products are manufactured to the highest standards and a 5 year guarantee covers any defect in manufacture.

**NOTE: - the 5 year guarantee on the valves is invalidated if damaged by any waterborne debris.**

*In the interests of continuous product development we reserve the right to alter specification as necessary*

**PRODUCT CODE: RO BSM C**  
**TELEPHONE HELP LINE : 0844 701 6273**

Bristan Group Ltd  
Birch Coppice Business Park  
Dordon  
Tamworth  
Staffordshire  
B78 1SG  
UK  
A Masco Company

Web Site: [www.bristan.com](http://www.bristan.com)  
Telephone: 0844 701 6274  
Facsimile: 0844 701 6275  
Email: [enquire@bristan.com](mailto:enquire@bristan.com)

(FI RO BSM)

(Rev. D3)

(H)

# BRISTAN

## Rio Bath Shower Mixer



Prior to drilling into walls, check there are no hidden electrical wires, cables or water supply pipes with the aid of an electronic detector. If you use power tools do not forget to:

- Wear eye protection
- Unplug equipment after use

## Fitting Instructions & Contents List

**Please keep these instructions for future reference and for the request of replacement parts**



For latest prices and delivery to your door visit MyTub Ltd 0845 303 8383 [www.mytub.co.uk](http://www.mytub.co.uk)

## WATER PRESSURE

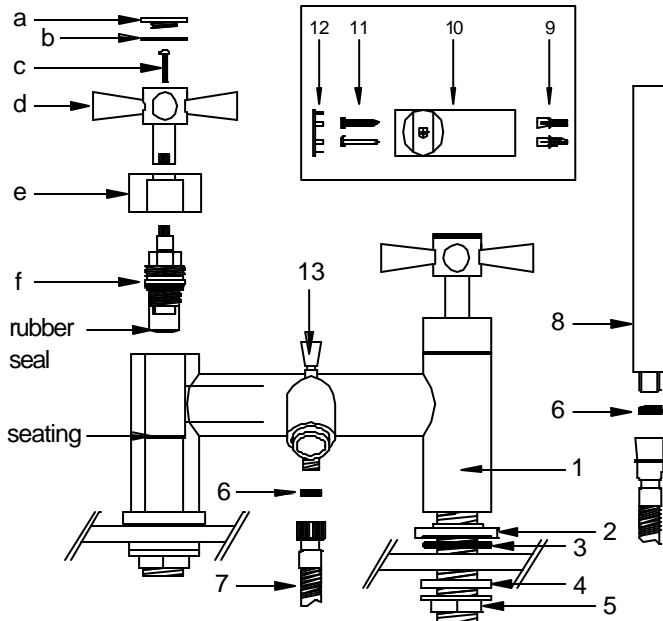
This mixer is suitable for use at all supply pressures. However for optimum use both the hot and cold supplies should be reasonably balanced.

If the fitting is installed at low pressure (tank fed), then the minimum height from the highest installed position of the showerhead to the underside of the cold tank should be 1 metre to ensure adequate shower performance.

This mixer incorporates a lock up diverter facility for low-pressure supplies. Simply lift up the diverter and twist to lock diverter in shower mode. Twist again to return to bath mode.

This mixer should be installed in compliance with Water Regulations. Where the supplies are unbalanced, i.e. hot water from cylinder tank/cold from the mains, approved check valves must be fitted in the supply pipes.


For further details contact your Local Water Authority.



## CONTENTS

1. Body	(x1)	7. Hose	(x1)
2. Plinth	(x2)	8. Handset	(x1)
3. Rubber O-Ring	(x2)	9. Rawl Plugs	(x2)
4. Rubber Washer	(x2)	10. Wall Bracket	(x1)
5. Backnut	(x2)	11. Fixing Screws	(x2)
6. Small Rubber Washer	(x2)	12. Cap	(x1)

## INSTALLATION

1. Identify all components and check for completeness, particularly before arranging fitting.
2. Fit the mixer body (1) to the bath using the plinths (2), rubber O-rings (3) above and washers (4), backnuts (5) below the bath. Connect the hot and cold water supplies.
3. Fit the hose (7) to the mixer (1) and the handset (8) using the small sealing washers (6).
4. To fit the wall bracket (10), position ensuring that the handset (8) will reach it.
5.  Mark out and drill holes to suit rawl plugs (9), then screw wall bracket (10) to the wall using fixing screws (11) and push cap (12) into place.
6. Fully open both valves, letting them run for a few minutes to check for leaks.
7. Operate the mixer in both bath and shower mode. To switch from bath to shower mode, pull the diverter knob (13) up. After use the mixer automatically reverts to the bath-filling mode, unless lifted and twisted to shower only mode.
8. See over the page for aftercare instructions.

## MAINTENANCE

If the fitting begins to drip:

1. Turn off the water supply.
2. Unscrew cap (a), remove indice (b), loosen screw (c) and pull off head (d).
3. Unscrew shroud (e) and unscrew ceramic disc valve (f).
4. Carefully clean seating, rubber seal and ceramic disc.
5. Replace valve and head and turn on the water supply.
6. Contact our helpline if problem persists.

## Please Note: -

In the unlikely event you find a part missing please contact our customer Service Help line on 0844 701 6273 for immediate dispatch of part.