

## AFTERCARE INSTRUCTIONS

Your fitting has a high quality finish and should be treated with care to preserve the visible surfaces. All surface finishes will wear if not cleaned correctly, the only safe way to clean your mixer is to wipe with a soft damp cloth. Stains can be removed using washing up liquid. All bath cleaning powders and liquids will damage the surface of your fitting even the non-scratch cleaners.

## GUARANTEE

All products are manufactured to the highest standards and a 5 year guarantee covers any defect in manufacture.

**NOTE:** The 5 year guarantee on the valves is invalidated if damaged by any waterborne debris.

*In the interests of continuous product development we reserve the right to alter specification as necessary.*

**PRODUCT CODE: PM 1HBSM C / SAT**  
**TELEPHONE HELPLINE: 0844 701 6273**

Bristan Group Ltd  
Birch Coppice Business Park  
Dordon  
Tamworth  
Staffordshire  
B78 1SG  
UK  
A Masco Company

Web Site: [www.bristan.com](http://www.bristan.com)  
Telephone: 0844 701 6273  
Facsimile: 0844 701 6275  
Email: [enquire@bristan.com](mailto:enquire@bristan.com)

(FI PM 1HBSM)

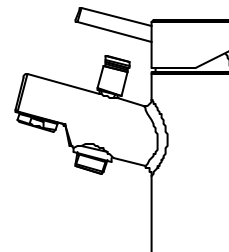
(D3)

(ST)

# BRISTAN

## Prism 1 Hole Bath Shower Mixer

## Fitting Instructions



**Please keep these instructions for future reference and request of replacement parts.**

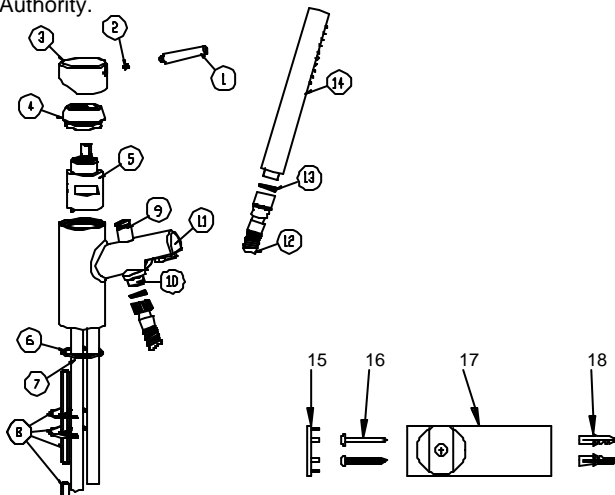


For latest prices and delivery to your door visit MyTub Ltd 0845 303 8383 [www.mytub.co.uk](http://www.mytub.co.uk)

## WATER PRESSURE

This mixer is suitable for use at all supply pressures. However for optimum use both the hot and cold supplies should be reasonably balanced. If the fitting is installed at low pressure (tank fed), then the minimum distance from the outlet of the nozzle to the underside of the cold tank should be 5 metres to ensure adequate performance. This equates to a minimum operating pressure of 0.5 bar. The distance from the highest installed position of the handset to the underside of the cold tank should be 2 metres to ensure adequate shower performance.

This mixer should be installed in compliance with Water Regulations. Where the supplies are unbalanced, i.e. hot water from the cylinder tank / cold from the mains, approved check valves must be fitted in the supply pipes. For further details contact your Local Water Authority.



**Please Note:** In the unlikely event you find a part missing please contact our Customer Service Help line on 0844 701 6273 or email [enquire@bristan.com](mailto:enquire@bristan.com) for immediate dispatch of part.

## INSTALLATION

1. Identify all components and check for completeness, particularly before arranging fitting.
2. Fit the mixer body to the bath using the 'C' plate fixing kit (8). The full rubber washer (6) goes between the fitting and the bath, and the 'C' shaped rubber and metal washers on the underside of the bath, to be secured by the nut and threaded rod.
3. Fit the tail pipes (7) to the fitting and connect the hot and cold supplies.
4. Attach hose (12) to body using one of the small rubber washers (13), attach the handset (14) to the other end using the second small rubber washer (13).
5. Fully open the mixer in the mid position, letting it run for a few minutes. Operate the diverter (9) to check the handset and hose function. Check all joints and connections for leaks.



Prior to drilling into walls, check there are no hidden electrical wires, cables or water supply pipes with the aid of an electronic detector. If you use power tools do not forget to:

- Wear eye protection
  - Unplug equipment after use
6. Measure and mark out the centers of the wall bracket (17). Prior to drilling ensure that the handset/hose will reach it.
  7. Drill the wall to suit wall plugs (18) supplied.
  8. Fix the wall bracket to the wall using the screws (16) and rawl plugs (18) provided. Finish with cap (15).

## MAINTENANCE

### If the fitting begins to drip:

1. Isolate water supplies.
2. Unscrew the lever (1) and loosen the grub screw (2) inside the threaded hole and remove handle (3).
3. Unscrew the shroud / retaining nut using a 33 A/F box spanner (outside edge of the spanner) and lift out the cartridge and seal.
4. Clean or replace cartridge, clean and grease seal and refit. **Note:** *that there are locating pins on the bottom of the cartridge that fit in holes inside the tap, to ensure it is fitted the right way round.*
5. Refit the handle (3) and tighten grub screw (2). Replace lever (1).
6. If problem persists contact our helpline quoting the product code.