

## AFTERCARE INSTRUCTIONS

Your fitting has a high quality finish and should be treated with care to preserve the visible surfaces. All surface finishes will wear if not cleaned correctly, the only safe way to clean your bath filler is to wipe with a soft damp cloth. Stains can be removed using washing up liquid. All bath cleaning powders and liquids will damage the surface of your fitting - even non-scratch cleaners.

## GUARANTEE

All products are manufactured to the highest standards and a 5 year guarantee covers any defect in manufacture.

**NOTE:** The 5 year guarantee on the valves is invalidated if damaged by any waterborne debris.

*In the interests of continuous product development we reserve the right to alter specification as necessary.*

**PRODUCT CODE: SN SB C**

**TELEPHONE HELP LINE: 0870 4425553**

Bristan Group Ltd  
Birch Coppice Business Park  
Dordon  
Tamworth  
Staffordshire  
B78 1SG  
UK  
A Masco Company

Web Site: [www.bristan.com](http://www.bristan.com)

Telephone: 0870 4425556

Facsimile: 0808 1611002

Email: [enquire@bristan.com](mailto:enquire@bristan.com)

(FI SN SB)

(Rev. D1)

(MZ)

# BRISTAN

## Synergy Side Bodies

## Fitting Instructions & Contents List

Please keep these instructions for future reference and for the ordering of spare parts.



For latest prices and delivery to your door visit MyTub Ltd 0845 303 8383 [www.mytub.co.uk](http://www.mytub.co.uk)

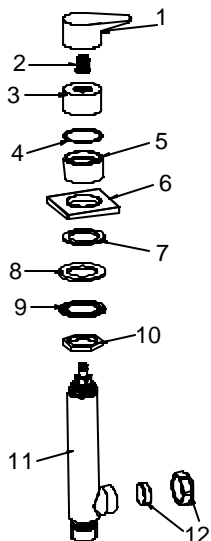
These side bodies are intended to be used as a manual control in conjunction with other products, such as, a bath spout or a combined bath fill and overflow from the Bristan range in order to create a system to suit your requirements.

## WATER PRESSURE

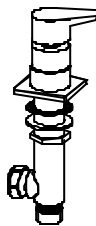
These fittings are suitable for use at all supply pressures. Depending on outlet choice and whether the fittings are installed at low pressure i.e. tank fed, and then the minimum height from the outlet to the underside of the cold tank should be 2.0 metres to ensure adequate performance.

This fitting should be installed in compliance with Water Regulations. Where the supplies are unbalanced i.e. hot water from the cylinder tank/cold from the mains, approved check valves must be fitted in the supply pipes. For further details contact your Local Water Authority.

### CONTENTS



|                 |      |
|-----------------|------|
| 1. Handle       | (x2) |
| 2. Insert       | (x2) |
| 3. Valve shroud | (x2) |
| 4. Indices      | (x2) |
| 5. Shroud       | (x2) |
| 6. Plinth       | (x2) |
| 7. Foam washer  | (x2) |
| 8. Washer       | (x2) |
| 9. Metal washer | (x2) |
| 10. Nut         | (x2) |
| 11. Side body   | (x2) |



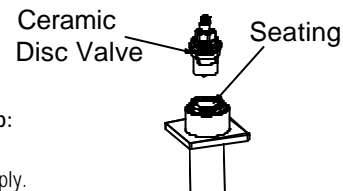
## INSTALLATION

1. Identify all components and check for completeness.
2. Fit the side bodies (11) to the bath using the shrouds (5), plinth (6) and foam washers (7) above, with the washers (8 & 9) and nuts (10) below the bath.
3. Fit the indices (4) and valve shrouds (3) to the valves (some adjustment of the nuts below the bath may be required to get the correct fit).
4. Fit the handles (1) to the side bodies making sure the inserts (2) are fitted to the valve splines first.
5. Connect the side bodies (11) to the chosen outlet using suitable lengths of 22mm pipe (not supplied), the 22mm compression fittings (12) and the connections supplied with the chosen outlet fitting.
6. Connect the hot and cold water supplies to the side body inlets.
7. Fully open both valves letting them run for a few minutes, check all joints and connections for leaks.
8. See over the page for aftercare instructions.

## MAINTENANCE

If the fitting begins to drip:

1. Turn off the water supply.
2. Lift off handle (simply pull) and unscrew shroud (3).
3. Remove indices and unscrew valve. Carefully clean valve, seal and seating.
4. Replace components and turn on the water supply.
5. Contact our helpline if problem persists.



## PLEASE NOTE:

In the unlikely event you find a part missing please contact our Customer Service Help line on 0870 4425553 or email [enquire@bristan.com](mailto:enquire@bristan.com) for immediate dispatch of part.