

### **AFTERCARE INSTRUCTIONS**

Your Bristan bathroom accessories have a high quality finish and should be treated with care to preserve the visible surfaces.

All surface finishes will wear if not cleaned correctly, the only safe way to clean your accessory is to wipe with a soft damp cloth. Stains can be removed using washing up liquid. All bath cleaning powders and liquids will damage the surface of your fitting even the non scratch cleaners.

### **GUARANTEE**

All products are manufactured to the highest standards and a 5 year guarantee covers any defect in manufacture.

As gold and special effect finishes are softer than chromium plate, special care must be taken when cleaning; a 3 year guarantee covers these finishes.

In the interests of continuous product development we reserve the right to alter specification as necessary

### **PRODUCT CODE: W03 C**

### **TELEPHONE HELP LINE! +44 (0) 870 4425553**

Bristan Limited  
Birch Coppice Business Park  
Dordon  
Tamworth  
Staffordshire  
B78 1SG  
UK

Web site: [www.bristan.com](http://www.bristan.com)

Telephone: +44 (0) 870 4425556

Facsimile: +44 (0) 870 4425554

Email: [enquire@bristan.com](mailto:enquire@bristan.com)

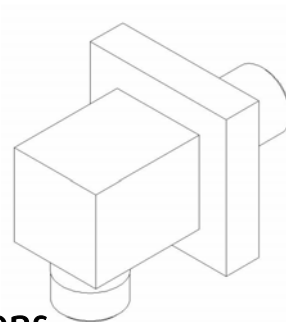
(FI W03)

(Rev. D4)

(B)

# BRISTAN

## Qube Wall Outlet



## Fitting Instructions & Content list

Please keep these instructions for future reference  
and request of spare parts.

myTub  
Congratulations on your purchase of this high quality Qube Bathroom Accessory. Before proceeding with the installation please carefully read the instructions in order to ensure proper care and assembly of this accessory.

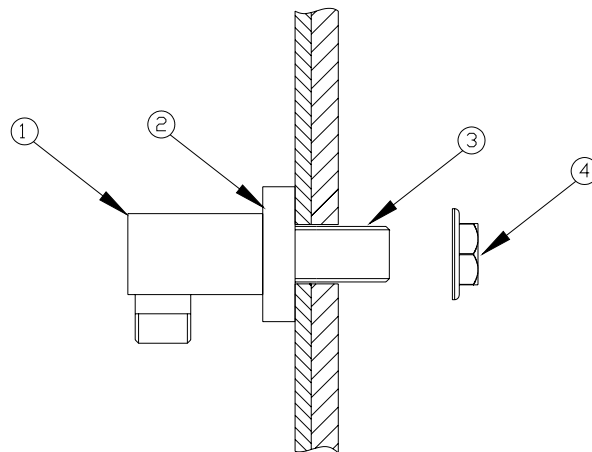
### **INSTALLATION**

1. Identify all components and check for completeness, particularly before arranging fitting.
2. Place the shroud (2) over the threaded nipple (3) and onto the wall outlet body (1) prior to fixing it to the wall.
3. Fix outlet to wall and secure in place with the backnut (4) supplied, connect to pipework in wall using appropriate adapter and sealant (not supplied).

**NOTE: - Before finishing wall turn on water supplies to check both correct system function and for leaking from joints/connections.**

4. See over the page for aftercare instructions.

### **INSTALLATION DIAGRAM**



1. Wall outlet
2. Shroud
3. Threaded Nipple
4. Backnut

### **Please Note: -**

In the unlikely event you find a part missing please contact our Customer Service Help line on +44 (0) 870 4425553 for immediate dispatch of part.