

AFTERCARE INSTRUCTIONS

Your fitting has a high quality finish and should be treated with care to preserve the visible surfaces.

All surface finishes will wear if not cleaned correctly, the only safe way to clean your mixer is to wipe with a soft damp cloth. Stains can be removed using washing up liquid. All bath cleaning powders and liquids will damage the surface of your fitting even the non-scratch cleaners.

GUARANTEE

All products are manufactured to the highest standards and a 5 year guarantee covers any defect in manufacture.

NOTE: - the 5 year guarantee on the valves is invalidated if damaged by any waterborne debris.

In the interests of continuous product development we reserve the right to alter specification as necessary

PRODUCT CODE: PM FMBF C

TELEPHONE HELP LINE! +44 (0)870 4425553

Bristan Limited
Lagrange
Lichfield Road Industrial Estate
Tamworth
Staffordshire
B79 7XD
UK

A MASCO COMPANY
Web Site: www.bristan.com
Telephone: +44 (0)870 4425556
Facsimile: +44 (0)870 4425554
Email: enquire@bristan.com
(FI PM FMBF) (Rev. D1)

(PA)

BRISTAN

Prism Floor Mounted Bath Filler



Before starting any installation project, consider "safety" first. Look for the "safety note" sign and read the safety advice.

Fitting Instructions & Contents List

Please keep these instructions for future reference and for the ordering of spare parts.

WATER PRESSURE

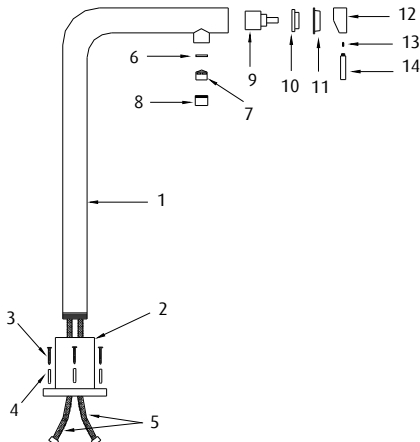
This mixer is suitable for use at a minimum supply pressure of 1.0 bar. However for optimum, both the hot and cold supplies should be reasonably balanced.

If the fitting is installed at low pressure (tank fed), then the minimum height from the outlet of the nozzle to the underside of the cold tank should be approximately 10 metres to ensure adequate performance.

This mixer should be installed in compliance with Water Regulations. For further details contact your Local Water Authority.

CONTENTS

- | | |
|-------------------|------|
| 1. Mixer Body | (x1) |
| 2. Mixer Base | (x1) |
| 3. Screws | (x4) |
| 4. Fixing Plugs | (x4) |
| 5. Flexible pipes | (x2) |
| 6. Washer | (x1) |
| 7. Aerator | (x1) |
| 8. Aerator Casing | (x1) |
| 9. Cartridge | (x1) |
| 10. Locknut | (x1) |
| 11. Shroud | (x1) |
| 12. Handle | (x1) |
| 13. Grub Screw | (x1) |
| 14. Handle Lever | (x1) |



Please Note: -

In the unlikely event you find a part missing please contact our Customer Service Help line on +44 (0)870 4425553 or email enquire@bristan.com for immediate despatch of part.

INSTALLATION

1. Identify all components and check for completeness, particularly before arranging fitting.
2. Screw the mixer body (1) into the mixer base (2). Mark out fixing positions on flooring where plugs (4) (if required) and screws (3) are to be located through base, ensuring adequate space is left for connecting the water supplies.



Prior to drilling into flooring, check there are no hidden electrical wires, cables or water supply pipes with the aid of an electronic detector. If you use power tools do not forget to:

- Wear eye protection
- Unplug equipment after use

3. Once mounting positions are selected, remove product and drill the four holes required as necessary. Remove enough flooring surrounding mounting position to access water supplies.
4. Connect hot and cold water supplies using the flexible tail pipes (5). Mount the base to flooring using the screws and plugs provided (as necessary).
5. Turn on water supplies. Operate lever (14) and leave for a few minutes letting the water flow, to check all joints and connections for leaks.
6. See over the page for aftercare instructions.

MAINTENANCE

If the fitting begins to drip:

1. Turn off both water supplies.
2. Remove handle lever (14) and grub screw (13), then remove handle (12) by pulling from cartridge (9).
3. Unscrew shroud (11) and also locknut (10) using a suitable spanner. Then remove cartridge (9). Once removed, carefully clean seating and all exposed parts.
4. Replace all of the above then turn on the water supply.
5. If problem persists contact our helpline quoting the product code.