



AFTERCARE INSTRUCTIONS

Your fitting has a high quality finish and should be treated with care to preserve the visible surfaces.

All surface finishes will wear if not cleaned correctly, the only safe way to clean your mixer is to wipe with a soft damp cloth. Stains can be removed using washing up liquid. All bath cleaning powders and liquids will damage the surface of your fitting even the non-scratch cleaners.

GUARANTEE

All products are manufactured to the highest standards and a 5 year guarantee covers any defect in manufacture.

NOTE: - the 5 year guarantee on the valves is invalidated if damaged by any waterborne debris.

In the interests of continuous product development we reserve the right to alter specification as necessary

PRODUCT CODE: TW BAS C / TW BID C

TELEPHONE HELP LINE! +44 (0)870 4425553

Bristan Limited
Lagrange
Lichfield Road Industrial Estate
Tamworth
Staffordshire
B79 7XD
UK

Web Site: www.bristan.com
Telephone: +44 (0)870 4425556
Facsimile: +44 (0)870 4425554
Email: enquire@bristan.com
(FI TW BASBID) (Rev. D1)

(U)

BRISTAN

Twist Basin & Bidet Mixer with Pop-up Waste

Fitting Instructions & Contents List

Please keep these instructions for future reference and for the ordering of spare parts.

WATER PRESSURE

This mixer is suitable for use at all supply pressures. However for optimum use, both the hot and cold supplies should be reasonably balanced.

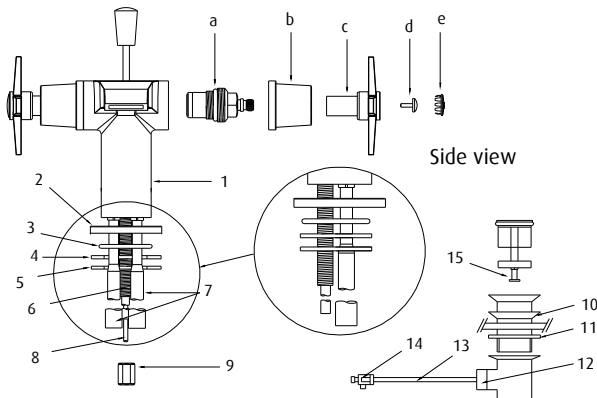
If the fitting is installed at low pressure (tank fed), then the minimum distance from the outlet of the nozzle to the underside of the cold tank should be 2 metres to ensure adequate performance.

Where the supplies are unbalanced, i.e. hot water from the cylinder tank / cold from the mains, approved check valves must be fitted in the supply pipes.

The mixer should be installed in compliance with Water Regulations. For further details contact your Local Water Authority.

CONTENTS

1. Mixer Body	(x1)	8. Pop-up Rod	(x1)	15. Screw	(x1)
2. Plinth	(x1)	9. Nut	(x1)	a. Valve	(x2)
3. O-Ring	(x1)	10. Washer	(x1)	b. Shroud	(x2)
4. Rubber C-Plate	(x1)	11. Flat Washer	(x1)	c. Handle	(x2)
5. Metal C-Plate	(x1)	12. Waste Cap	(x1)	d. Handle Screw	(x2)
6. Threaded Rod	(x1)	13. Waste Rod	(x1)	e. Indice	(x2)
7. Copper Tail Pipes	(x2)	14. Connector	(x1)		



INSTALLATION

1. Identify all components and check for completeness, particularly before arranging fitting.

2. Fit the mixer body (1) to the basin/bidet using the 'C' plate fixing kit. The plinth (2) and o-ring (3) go between the fitting and the basin/bidet, and the 'C' shaped rubber (4) and metal (5) plates on the underside of the basin/bidet, to be secured by the nut (9) and threaded rod (6).

3. Fit the tailpipes (7) to the fitting and connect the hot and cold supplies.

4. Fit the pop up waste, with the flat washer (11) below and the shaped washer (10) above the basin/bidet. It is recommended that a silicon sealant be applied to both sealing faces of washers 10 and 11. The plug height can be set by adjusting the pop-up rod (8), waste rod (13), rod connector (14) and the screw (15) in the base of the plug. Friction for the waste mechanism can be adjusted using the waste cap (12).

5. Turn on the water supplies. Fully open both valves letting the water flow for a few minutes to check all joints and connections for leaks.

6. See over the page for aftercare instructions.

MAINTENANCE

If the fitting begins to drip:

1. Turn off the water supply.
2. Remove indice (e) and handle screw (d) then remove handle (c) by pulling from valve (a).
3. Unscrew shroud (b), then using a suitable spanner, remove valve. Once removed, carefully clean seating, rubber washer and ceramic disc.
4. Replace all of the above then turn on the water supply.
5. If problem persists contact our helpline quoting the product code.

Please Note: -

In the unlikely event you find a part missing please contact our Customer Service Help line on +44 (0)870 4425553 or email enquire@bristan.com for immediate despatch of part.