



Product Range iFIT 2008

The new and faster
installation system for
building services

iFIT

push, click, done

+GF+

GEORG FISCHER
PIPING SYSTEMS

iFIT

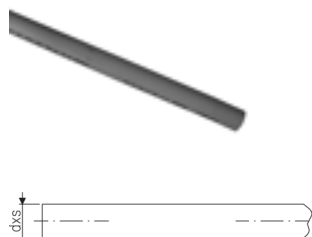
		Page
	Pipes	4
	Adaptors	6
	Fittings	7
	Threaded fittings	10
	iFIT-INSTAFLEX module	12
	iFIT Ball Valves	13
	iFIT-Press Modules	18
	Outlet joints	19
	Manifolds	22
	Accessories from the INSTAFLEX range	23
	Pipe supports and brackets	24
	Connecting elbows	26
	Tools	27

Pipes

4510

Pipe multilayer in bars of 5,0 m

- packed in cardboard boxes



PF 2 96 856 101

d [mm]	s [mm]	Code	SP	GP	kg/m	
16	2.0	762 101 005	45	-	0.118	
20	2.0	762 101 006	45	-	0.154	
25	2.5	762 101 007	50	-	0.284	
32	3.0	762 101 008	20	-	0.354	

4500

Pipe multilayer in coils

- packed in cardboard boxes
- Pipe multilayer in coils
- *packed in protective wrap

* on request



PF 2 96 854 101

d [mm]	s [mm]	Code	SP	GP	kg/m	
16	2.0	762 101 000	100	-	0.118	
*16	2.0	762 101 014	200	-	0.118	
20	2.0	762 101 001	50	-	0.154	
25	2.5	762 101 130	50	-	0.289	
32	3.0	762 101 131	50	-	0.354	

4505

Pipe multilayer with protective pipe

- packed in cardboard boxes
- Pipe multilayer in coils
- *with protective pipe in red

* on request



PF 2 96 855 101

d [mm]	s [mm]	Code	SP	GP	kg/m	D [mm]	
16	2.0	762 101 003	75	-	0.194	25	
*16	2.0	762 101 194	75	-	0.194	25	
20	2.0	762 101 004	50	-	0.246	30	
*20	2.0	762 101 195	50	-	0.246	30	

4516

Pipe polybutylene for iFIT in coils

- packed in cardboard boxes
- Pipe PB in coils

* on request



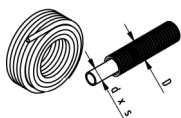
PF 2 96 869 101

d [mm]	s [mm]	Code	SP	GP	kg/m	
16	2.0	762 101 126	60	-	0.088	
20	2.0	762 101 127	60	-	0.115	
25	2.5	762 101 128	30	-	0.178	

4515

Pipe polybutylene for iFIT with protective pipe

- packed in cardboard boxes
- Pipe PB in coils



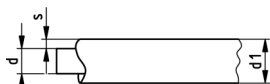
PF 2 96 857 101

d [mm]	s [mm]	Code	SP	GP	kg/m	D [mm]	
16	2.0	762 101 012	60	-	0.164	25	
20	2.0	762 101 013	60	-	0.207	30	
25	2.5	762 101 011	30	-	0.286	34	

4502

Pipe multilayer insulated 6 mm

- packed in cardboard boxes
- Pipe multilayer in coils



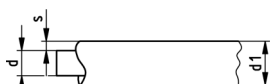
PF 2 96 856 101

d [mm]	s [mm]	Code	SP	GP	kg/m	d1 [mm]	
16	6.0	762 101 024	50	-	0.150	28	
20	6.0	762 101 032	50	-	0.200	32	
25	6.0	762 101 043	25	-	0.400	37	

4502

Pipe multilayer insulated 9 mm

- packed in cardboard boxes
- Pipe multilayer in coils



PF 2 96 856 101

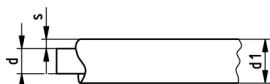
d [mm]	s [mm]	Code	SP	GP	kg/m	d1 [mm]	
16	9.0	762 101 076	50	-	0.230	34	
20	9.0	762 101 078	50	-	0.280	38	
25	9.0	762 101 082	25	-	0.450	43	

4502

Pipe multilayer insulated 13 mm

- *packed in protective wrap

* on request



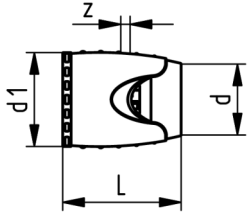
PF 2 96 856 101

d [mm]	s [mm]	Code	SP	GP	kg/m	d1 [mm]	
*16	13.0	762 101 086	50	-	0.300	42	
*20	13.0	762 101 090	50	-	0.400	46	
*25	13.0	762 101 104	25	-	0.500	51	

Adaptors

Adaptor

4520

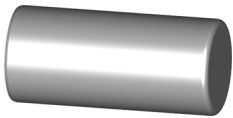


PF 2 96 858 101

d [mm]	d1 [mm]	Code	SP	GP	kg	z [mm]	L [mm]	
16	30	762 101 030	10	150	0.023	5	48	
20	34	762 101 031	10	150	0.030	5	49	
25	45	762 101 034	5	50	0.067	8	62	
32	52	762 101 035	5	50	0.088	8	63	

4525

Cap for adaptor



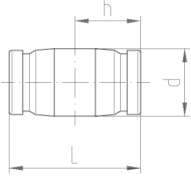
PF 2 96 859 102

d [mm]	s [mm]	Code	SP	GP	kg	
16	2.0	762 101 017	5	-	0.006	
25	2.5	762 101 027	5	-	0.013	

Fittings

4585

Socket / Reducing bush module

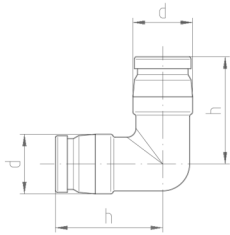


PF 2 96 783 101

d [mm]	Code	SP	GP	kg	L [mm]	h [mm]	
16 / 20	762 101 044	10	500	0.007	39	20	
25 / 32	762 101 175	5	200	0.023	56	28	

4590

Elbow 90° module

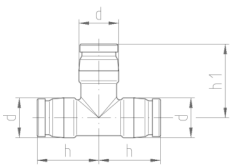


PF 2 96 783 103

d [mm]	Code	SP	GP	kg	h [mm]	
16 / 20	762 101 046	10	50	0.012	36	
25 / 32	762 101 179	5	20	0.042	54	

4595

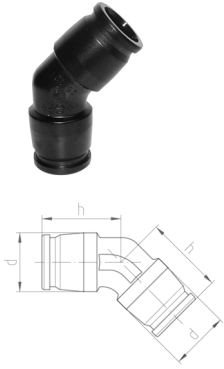
Tee equal module



PF 2 96 783 105

d [mm]	Code	SP	GP	kg	h [mm]	h1 [mm]	
16 / 20	762 101 042	10	50	0.015	31	37	
25 / 32	762 101 181	5	20	0.053	45	54	

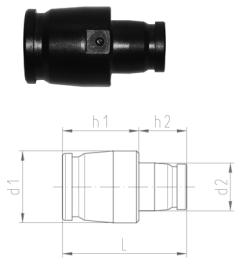
4591

Elbow 45° module

PF 2 96 783 108

d [mm]	Code	SP	GP	kg	h [mm]	
25 / 32	762 101 180	5	20	0.033	40	

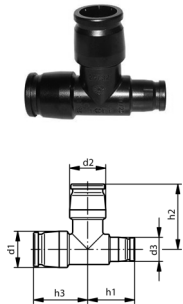
4586

Reducing bush module

PF 2 96 783 107

d1 [mm]	d2 [mm]	Code	SP	GP	kg	L [mm]	h1 [mm]	h2 [mm]	
25 / 32	16 / 20	762 101 177	2	150	0.018	52	32	20	

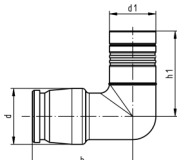
4600

Tee reduced module

PF 2 96 783 106

d1 [mm]	d2 [mm]	d3 [mm]	Code	SP	GP	kg	H1 [mm]	H2 [mm]	H3 [mm]	
25 / 32	25 / 32	16 / 20	762 101 183	2	70	0.043	45	54	39	
25 / 32	16 / 20	25 / 32	762 101 185	2	70	0.043	45	48	45	
25 / 32	16 / 20	16 / 20	762 101 187	2	70	0.033	45	48	39	

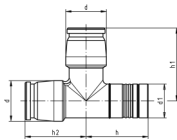
4592

Elbow 90° module with pipe outline (m-f)

PF 2 96 783 103

d [mm]	Code	SP	GP	kg	d1 [mm]	h [mm]	h1 [mm]	
16 / 20	762 101 202	5	50	0.013	20	36	40	
25 / 32	762 101 203	2	20	0.029	25	54	46	

4602

Tee equal module with pipe outline (m-f)

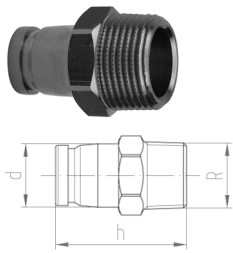
PF 2 96 783 103

d [mm]	Code	SP	GP	kg	d1 [mm]	h [mm]	h1 [mm]	h2 [mm]	
16 / 20	762 101 204	5	50	0.017	20	41	37	32	
25 / 32	762 101 205	2	20	0.042	25	46	54	45	

Threaded fittings

4605

iFIT x BSP male thread

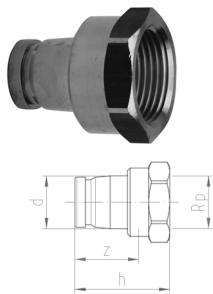


PF 2 96 866 101

d [mm]	R [inch]	Code	SP	GP	kg	h [mm]	
16 / 20	1/2	762 101 038	10	50	0.061	42	
16 / 20	3/4	762 101 039	10	50	0.078	43	
25 / 32	3/4	762 101 091	2	20	0.144	51	
25 / 32	1	762 101 092	2	20	0.189	55	

4610

iFIT x BSP female thread



PF 2 96 866 102

d [mm]	Rp [inch]	Code	SP	GP	kg	h [mm]	z [mm]	
16 / 20	1/2	762 101 040	10	50	0.067	36	23	
16 / 20	3/4	762 101 041	10	50	0.087	39	24	
25 / 32	3/4	762 101 093	2	20	0.131	45	31	
25 / 32	1	762 101 094	2	20	0.163	49	32	

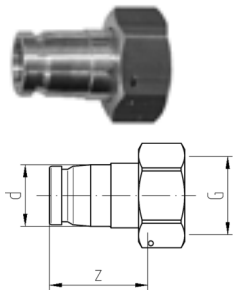
4615

Union flat seal TAP CONNECTORS

Model:

- supplied with sealing

* on request

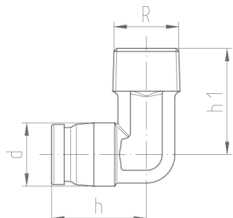


PF 2 96 866 103

d [mm]	G [inch]	Code	SP	GP	kg	z [mm]	
16 / 20	3/4	762 101 056	2	-	0.090	35	
25 / 32	3/4	762 101 095	2	-	0.170	48	
25 / 32	1	762 101 096	2	-	0.210	55	
25 / 32	1 1/4	762 101 097	2	-	0.250	48	
25 / 32	1 1/2	762 101 098	2	-	0.307	50	

4620

Elbow iFIT x BSP male thread

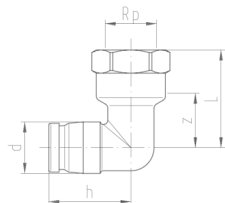


PF 2 96 866 104

d [mm]	R [inch]	Code	SP	GP	kg	h [mm]	h1 [mm]	
16 / 20	1/2	762 101 051	10	50	0.077	30	34	
16 / 20	3/4	762 101 052	10	50	0.092	30	35	
25 / 32	3/4	762 101 099	2	20	0.204	45	43	
25 / 32	1	762 101 100	2	20	0.213	45	45	

4630

Elbow iFIT x BSP female thread

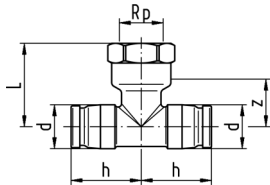


PF 2 96 866 105

d [mm]	Rp [inch]	Code	SP	GP	kg	h [mm]	L [mm]	z [mm]	
16 / 20	1/2	762 101 101	10	60	0.103	32	38	25	
16 / 20	3/4	762 101 105	10	40	0.129	36	40	22	

4625

Tee iFIT x BSP female thread



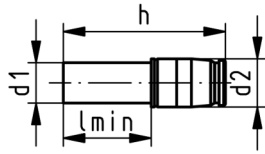
PF 2 96 866 106

d [mm]	Rp [inch]	Code	SP	GP	kg	h [mm]	z [mm]	L [mm]	
16 / 20	1/2	762 101 055	5	40	0.131	32	25	38	
25 / 32	3/4	762 101 103	2	14	0.231	43	35	50	

iFIT-INSTAFLEX module

4606

iFIT-INSTAFLEX module

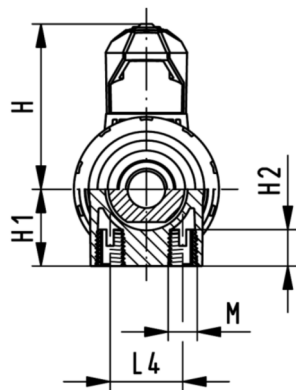
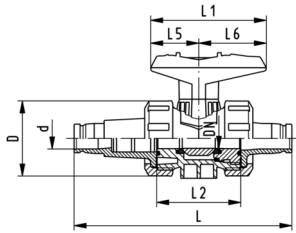
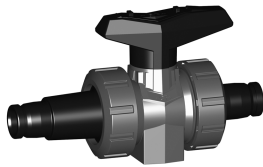


PF 2 96 866 110

d2 [mm]	d1 [mm]	Code	SP	GP	kg	h [mm]	L min. HMS [mm]	L min. HWS [mm]	
16 / 20	16	762 101 057	1	-	0.059	84	30	46	
16 / 20	20	762 101 058	1	-	0.071	86	30	48	
16 / 20	25	762 101 067	1	-	0.090	94	33	56	
25 / 32	25	762 101 059	1	-	0.145	101	33	56	
25 / 32	32	762 101 060	1	-	0.177	101	35	56	

iFIT Ball Valves

PROGEF Standard Shipbuilding ball valve type 547 With iFIT connection



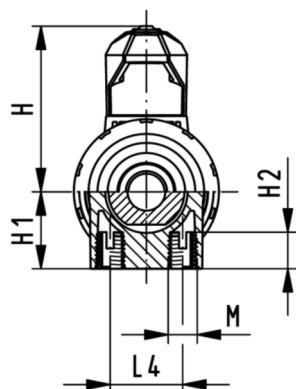
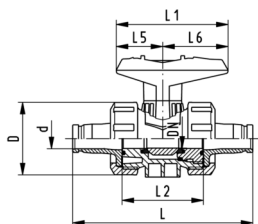
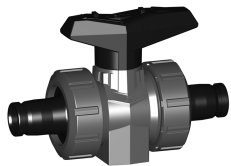
Model:

- Material: PP-H
- iFIT connection for d16/20
- iFIT connector with integrated check valve and filter
- For easy installation and removal
- Ball seals PTFE
- Integrated stainless steel mounting inserts

d [mm]	DN [mm]	PN	kv-value ($\Delta p=1$ bar) [l/min]	EPDM Code	SP	GP	kg					
16	15	10	40	167 547 012	1	2	0.245					

d [mm]	D [mm]	H [mm]	H1 [mm]	H2 [mm]	L [mm]	L1 [mm]	L2 [mm]	L4 [mm]	L5 [mm]	L6 [mm]	M [mm]		
16	50	57	27	12	146	77	56	25	32	45	6		

PF 2 34 982 001



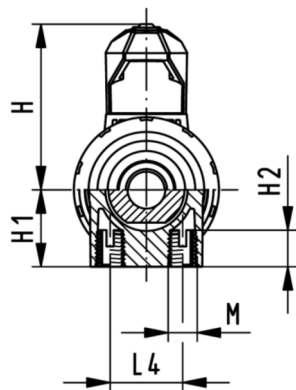
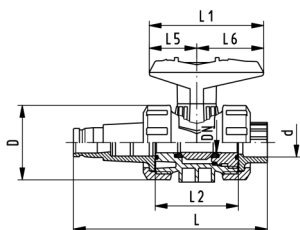
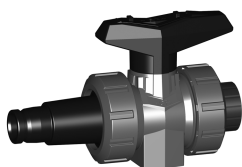
PF 2 34 982 001

PROGEF Standard Shipbuilding ball valve type 547 With iFIT connection

Model:

- Material: PP-H
- iFIT connection for d16/20
- For easy installation and removal
- Ball seals PTFE
- Integrated stainless steel mounting inserts

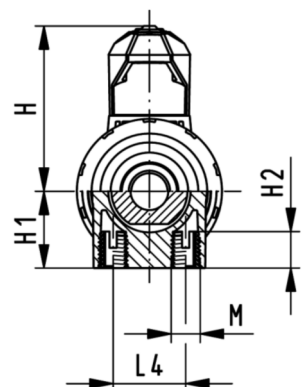
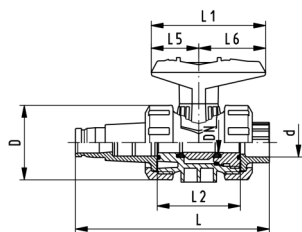
d [mm]	DN [mm]	PN	kv-value ($\Delta p=1$ bar) [l/min]	EPDM Code	SP	GP	kg					
16	15	10	185	167 547 812	1	2	0.152					
d [mm]	D [mm]	H [mm]	H1 [mm]	H2 [mm]	L [mm]	L1 [mm]	L2 [mm]	L4 [mm]	L5 [mm]	L6 [mm]	M [mm]	
16	50	57	27	12	126	77	56	25	32	45	6	



PROGEF Standard Shipbuilding ball valve type 547 With iFIT connection and fusion socket PB

Model:

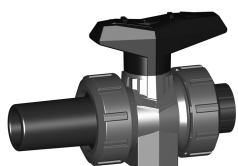
- Material: PP-H
- iFIT connection for d16/20
- iFIT connection with integrated check valve and filter
- For easy installation and removal
- Ball seals PTFE
- Integrated stainless steel mounting inserts



PF 2 34 982 001

d [mm]	DN [mm]	PN	kv-value ($\Delta p=1$ bar) [l/min]	EPDM Code	SP	GP	kg	
16	10	10	40	167 547 041	1	2	0.244	
20	15	10	40	167 547 042	1	2	0.242	

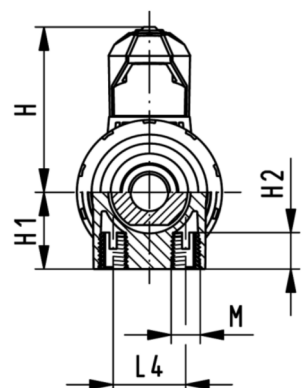
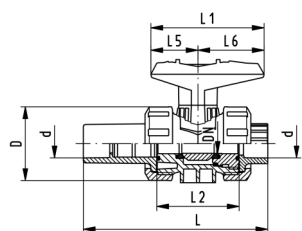
d [mm]	D [mm]	H [mm]	H1 [mm]	H2 [mm]	L [mm]	L1 [mm]	L2 [mm]	L4 [mm]	L5 [mm]	L6 [mm]	M [mm]	
16	50	57	27	12	130	77	56	25	32	45	6	
20	50	57	27	12	131	77	56	25	32	45	6	



PROGEF Standard Shipbuilding ball valve type 547 With fusion sockets PB

Model:

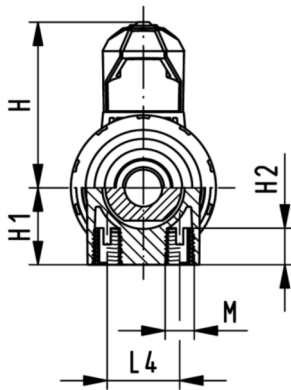
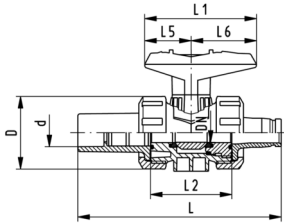
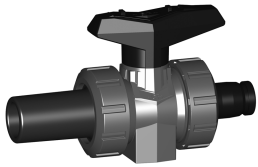
- Material: PP-H
- Fusion socket with integrated check valve and filter
- For easy installation and removal
- Ball seals PTFE
- Integrated stainless steel mounting inserts



PF 2 34 982 001

d [mm]	DN [mm]	PN	kv-value ($\Delta p=1$ bar) [l/min]	EPDM Code	SP	GP	kg	
16	10	10	40	167 547 341	1	2	0.302	
20	15	10	40	167 547 342	1	2	0.300	

d [mm]	D [mm]	H [mm]	H1 [mm]	H2 [mm]	L [mm]	L1 [mm]	L2 [mm]	L4 [mm]	L5 [mm]	L6 [mm]	M [mm]	
16	50	57	27	12	125	77	56	25	32	45	6	
20	50	57	27	12	126	77	56	25	32	45	6	



PROGEF Standard Shipbuilding ball valve type 547 With fusion socket PB and iFIT connection

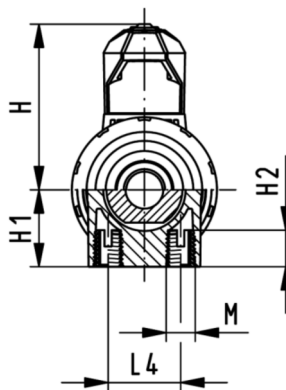
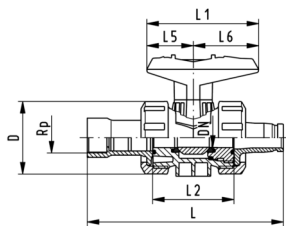
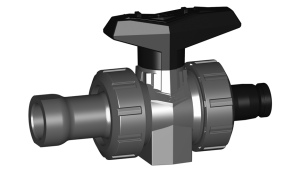
Model:

- Material: PP-H
- iFIT connection for d16/20
- Fusion socket PB with integrated check valve and filter
- For easy installation and removal
- Ball seals PTFE
- Integrated stainless steel mounting inserts

d [mm]	DN [mm]	PN	kv-value ($\Delta p=1$ bar) [l/min]	EPDM Code	SP	GP	kg					
16	10	10	40	167 547 311	1	2	0.303					
20	15	10	40	167 547 312	1	2	0.303					

d [mm]	D [mm]	H [mm]	H1 [mm]	H2 [mm]	L [mm]	L1 [mm]	L2 [mm]	L4 [mm]	L5 [mm]	L6 [mm]	M [mm]		
16	50	57	27	12	141	77	56	25	32	45	6		
20	50	57	27	12	141	77	56	25	32	45	6		

PF 2 34 982 001



PF 2 34 982 001

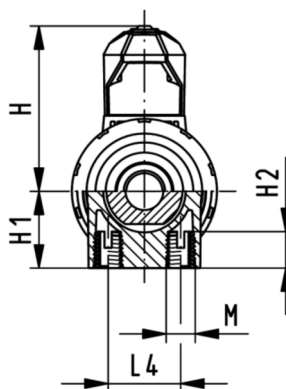
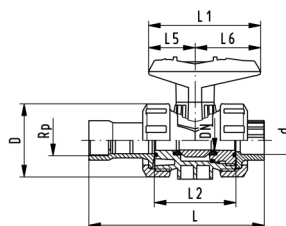
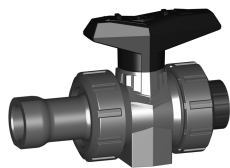
PROGEF Standard Shipbuilding ball valve type 547 With threaded socket Rp brass and iFIT connection

Model:

- Material: PP-H
- iFIT connection for d16/20
- Threaded socket Rp brass with integrated check valve and filter
- For easy installation and removal
- Ball seals PTFE
- Integrated stainless steel mounting inserts

Rp [inch]	DN [mm]	PN	kv-value ($\Delta p=1$ bar) [l/min]	EPDM Code	SP	GP	kg	
1/2	15	10	40	167 547 512	1	2	0.327	

Rp [inch]	D [mm]	H [mm]	H1 [mm]	H2 [mm]	L [mm]	L1 [mm]	L2 [mm]	L4 [mm]	L5 [mm]	L6 [mm]	M [mm]	
1/2	50	57	27	12	136	77	56	25	32	45	6	



PF 2 34 982 001

PROGEF Standard Shipbuilding ball valve type 547 With threaded socket Rp brass and fusion socket PB

Model:

- Material: PP-H
- Threaded socket Rp brass with integrated check valve and filter
- For easy installation and removal
- Ball seals PTFE
- Integrated stainless steel mounting inserts

Rp [inch]	d [mm]	DN [mm]	PN	kv-value ($\Delta p=1$ bar) [l/min]	EPDM Code	SP	GP	kg	
1/2	16	10	10	40	167 547 541	1	2	0.326	
1/2	20	15	10	40	167 547 542	1	2	0.324	

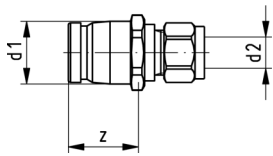
Rp [inch]	d [mm]	D [mm]	H [mm]	H1 [mm]	H2 [mm]	L [mm]	L1 [mm]	L2 [mm]	L4 [mm]	L5 [mm]	L6 [mm]	M [mm]	
1/2	16	50	57	27	12	120	77	56	25	32	45	6	
1/2	20	50	57	27	12	121	77	56	25	32	45	6	

iFIT-Press Modules

4671

iFIT - Copper module

on request



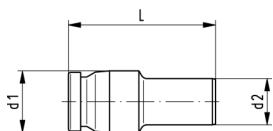
PF 2 96 866 107

d1 [mm]	d2 [mm]	Code	SP	GP	kg	z [mm]	
16 / 20	10	762 101 089	10	-	0.070	22	

4680

iFIT-Press module

- according to DIN 10312



PF 2 96 865 101

d1 [mm]	d2 [mm]	Code	SP	GP	kg	L [mm]	
16 / 20	15	762 101 190	2	-	0.042	54	
16 / 20	18	762 101 191	2	-	0.047	56	
25 / 32	22	762 101 192	2	-	0.114	70	
25 / 32	28	762 101 193	2	-	0.114	70	

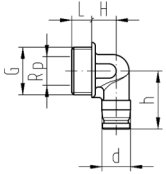
Outlet joints

4545

WC single connection module concealed

Model:

- inclusive plastic union nut



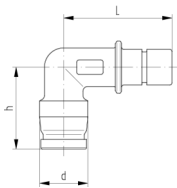
PF 2 96 862 101

d [mm]	Rp [inch]	Code	SP	GP	kg	G [inch]	L [mm]	H [mm]	h [mm]	
16 / 20	½	762 101 023	5	25	0.032	1	14	17	41	

4546

Pipe outlet for flushing cistern Meplafix

- incl. protection cap



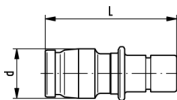
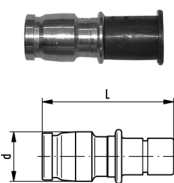
PF 2 96 862 102

d [mm]	Code	SP	GP	kg	L [mm]	h [mm]	
16 / 20	762 101 025	5	50	0.085	45	34	

4548

Pipe outlet for flushing cistern Meplafix

- incl. protection cap



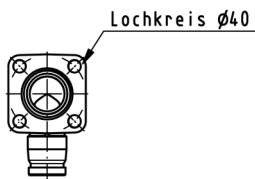
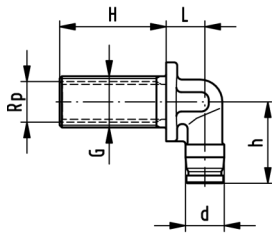
PF 2 96 862 102

d [mm]	Code	SP	GP	kg	L [mm]	
16 / 20	762 101 026	1	30	0.060	53	

4547

Single pipe outlet 1/2" - 3/4"

* on request



PF 2 96 860 104

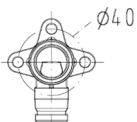
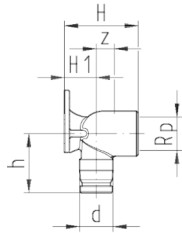
d [mm]	Rp [inch]	Code	SP	GP	kg	L [mm]	H [mm]	h [mm]	G [inch]	
16 / 20	1/2	762 101 047	1	10	0.250	20	55	42	3/4	

4530

Single pipe outlet

- applicable for light and wood construction

* on request



PF 2 96 860 101

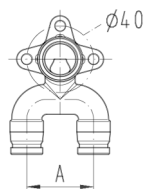
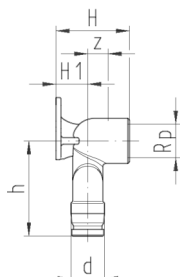
d [mm]	Rp [inch]	Code	SP	GP	kg	H [mm]	H1 [mm]	h [mm]	z [mm]	
16 / 20	1/2	762 101 018	10	50	0.141	44	19	36	12	
16 / 20	1/2	762 101 070	5	10	0.201	64	19	36	32	
16 / 20	3/4	762 101 019	2	10	0.168	44	19	39	11	

4535

Dual pipe outlet

- applicable for light and wood construction

* on request



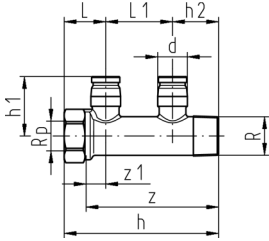
PF 2 96 860 102

d [mm]	Rp [inch]	Code	SP	GP	kg	H [mm]	H1 [mm]	h [mm]	z [mm]	A [mm]	
16 / 20	½	762 101 022	60	-	0.238	44	19	57	12	40	
16 / 20	½	762 101 071	2	-	0.298	64	19	57	32	40	

Manifolds

4550

Manifold module



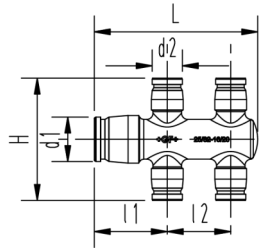
PF 2 96 863 101

d [mm]	Rp [inch]	R [inch]	outlet	Code	SP	GP	kg	
16 / 20	3/4	3/4	2-fold	762 101 048	2	10	0.280	
16 / 20	3/4	3/4	3-fold	762 101 049	2	10	0.389	
16 / 20	3/4	3/4	4-fold	762 101 053	2	10	0.527	

d [mm]	h [mm]	h1 [mm]	h2 [mm]	L [mm]	L1 [mm]	z [mm]	z1 [mm]	
16 / 20	104	40	31	28	45	90	14	
16 / 20	149	40	31	28	45	135	14	
16 / 20	194	40	31	28	45	180	14	

4551

Manifold module

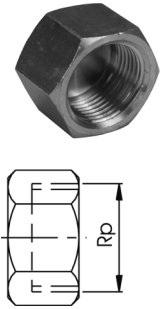


PF 2 96 863 101

d1 [mm]	d2 [mm]	outlet	Code	SP	GP	kg	l1 [mm]	l2 [mm]	H [mm]	L [mm]	
25 / 32	16 / 20	3-fold	762 101 213	2	-	0.052	46	40	77	103	
25 / 32	16 / 20	4-fold	762 101 212	2	-	0.056	46	40	77	103	

Accessories from the INSTAFLEX range

3266

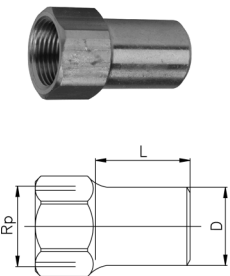


Cap

- from the INSTAFLEX range

Rp [inch]	Code	SP	GP	kg	
3/4	760 853 794	5	-	0.084	
1	760 853 706	5	-	0.134	

3268

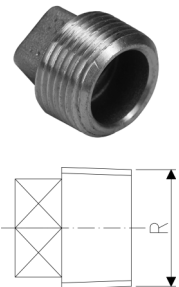


Cap long

- from the INSTAFLEX range

Rp [inch]	Code	SP	GP	kg	D [mm]	L [mm]	
3/4	760 853 596	5	-	0.162	27	34	

3267

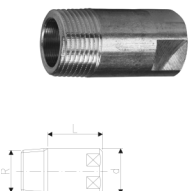


Plug

- from the INSTAFLEX range

R [inch]	Code	SP	GP	kg	
3/4	760 853 792	5	-	0.050	
1	760 853 793	5	-	0.084	

3264



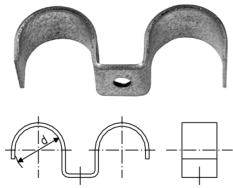
Plug long

- from the INSTAFLEX range

R [inch]	Code	SP	GP	kg	D [mm]	L [mm]	
3/4	760 869 989	5	-	0.150	27	52	

Pipe supports and brackets

3915

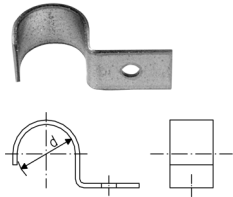


Pipe clip, metal

- from the INSTAFLEX range

d [mm]	Code	SP	GP	kg	
25	760 853 628	50	-	0.040	

3920

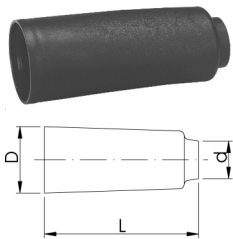


Pipe clip, metal

- from the INSTAFLEX range

d [mm]	Code	SP	GP	kg	
25	760 853 254	50	-	0.027	
30	760 853 567	50	-	0.031	
35	760 854 951	50	-	0.042	

3921

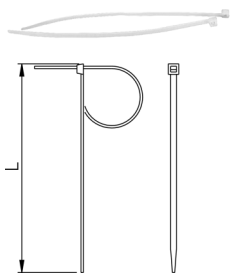


Cap for protective pipe

- from the INSTAFLEX range

d [mm]	Colors	Code	SP	GP	kg	D [mm]	L [mm]	
16	red	760 854 986	10	-	0.005	25	70	
16	green	760 854 987	10	-	0.005	25	70	
20	red	760 854 988	10	-	0.007	30	70	
20	green	760 854 989	10	-	0.007	30	70	

3930

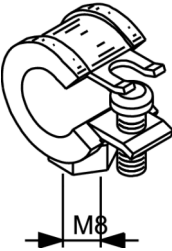


Pipe binder

- from the INSTAFLEX range

d-d [mm]	Code	SP	GP	kg	L [mm]	
16 - 40	760 853 283	100	-	0.001	200	
50 - 75	760 853 284	100	-	0.003	300	
90 - 110	760 854 984	100	-	0.001	430	

3286



Mounting bracket M8

- from the INSTAFLEX range

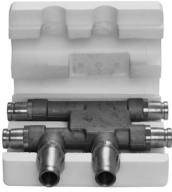
Code	SP	GP	kg	
760 856 212	10	-	0.029	

Connecting elbows

4570

Cross-Tee module

with isolation case



PF 2 96 864 104

d [mm]	Code	SP	GP	kg	L [mm]	L1 [mm]	H [mm]	H1 [mm]	H2 [mm]	
16 / 20	762 101 068	1	-	0.723	50	50	63	66	46	

Tools

4635

Tool set for pipes ML- and PB



PF 2 96 867 101

d [mm]	Code	SP	GP	kg	
16 / 20	762 101 122	1	-	1.170	
25 / 32	762 101 133	1	-	1.466	

4640

Chamfering tool for pipes ML- and PB



PF 2 96 867 102

d [mm]	Code	SP	GP	kg	
16	762 101 116	1	-	0.191	
20	762 101 120	1	-	0.210	
25	762 101 125	1	-	0.238	
32	762 101 132	1	-	0.315	

4645

Pipe shears d16-d20 for pipes ML- and PB

- also for cutting of protective pipe



PF 2 96 867 103

d	Code	SP	GP	kg	
16 / 20	762 101 108	1	-	0.321	
Spare blades	762 101 109	1	-	0.019	

5300

Pipe cutter d16-d32 for pipes ML- and PB



PF 2 96 867 103

d	Code	SP	GP	kg	
16 - 32	762 101 117	1	-	0.400	
Spare blades	762 101 118	1	-	0.006	

4650

Pipe bending tool for pipe ML



PF 2 96 867 104

d [mm]	Code	SP	GP	kg	
16	762 101 112	-	-	0.440	
20	762 101 113	-	-	0.643	
25	762 101 114	-	-	0.657	
32	762 101 115	-	-	0.700	

4651

Tool belt

Note:

- without tools



PF 2 96 867 105

Code	SP	GP	kg	
762 101 119	1	-	0.540	

4665

Pipe draw coupling

PF 2 96 867 104

d [mm]	Code	SP	GP	kg	
16	762 101 154	1	-	0.044	
20	762 101 155	1	-	0.090	

4660

Wall inlet plug

PF 2 96 867 104

d [mm]	Code	SP	GP	kg	
16	762 101 150	1	-	0.175	
20	762 101 151	1	-	0.192	
25	762 101 152	1	-	0.223	
32	762 101 153	1	-	0.349	

4661

Plug module-side

- with air-vent screw 1/2"



PF 2 96 867 104

d [mm]	Code	SP	GP	kg	
16 / 20	762 101 207	1	-	0.142	
25 / 32	762 101 208	1	-	0.199	

Numerial Product Range Code number

Code	SP	Page	Cat-No	Dimension	Article
760 853 254		24	3920	25	Single Pipe clip, metal d 25 mm
760 853 283		24	3930	16 - 40	Pipe binder d-d 16 - 40 mm
760 853 284		24	3930	50 - 75	Pipe binder d-d 50 - 75 mm
760 853 567		24	3920	30	Single Pipe clip, metal d 30 mm
760 853 596		23	3268	¾	Cap long Rp ¾ inch
760 853 628		24	3915	25	Dual Pipe clip, metal d 25 mm
760 853 706		23	3266	1	Cap Rp 1 inch
760 853 792		23	3267	¾	Plug R ¾ inch
760 853 793		23	3267	1	Plug R 1 inch
760 853 794		23	3266	¾	Cap Rp ¾ inch
760 854 951		24	3920	35	Single Pipe clip, metal d 35 mm
760 854 984		24	3930	90 - 110	Pipe binder d-d 90 - 110 mm
760 854 986		24	3921	16	Cap for protective pipe Colors red
760 854 987		24	3921	16	Cap for protective pipe Colors green
760 854 988		24	3921	20	Cap for protective pipe Colors red
760 854 989		24	3921	20	Cap for protective pipe Colors green
760 856 212		25	3286		Mounting bracket M8 manifold 3286 ¾
760 869 989		23	3264	¾	Plug long R ¾ inch
762 101 000		4	4500	16	Pipe multilayer without protective pipe d 16 mm
762 101 001		4	4500	20	Pipe multilayer without protective pipe d 20 mm
762 101 003		4	4505	16	Pipe multilayer with protective pipe d 16 mm
762 101 004		4	4505	20	Pipe multilayer with protective pipe d 20 mm
762 101 005		4	4510	16	Pipe multilayer in bars of 5,0 m d 16 mm
762 101 006		4	4510	20	Pipe multilayer in bars of 5,0 m d 20 mm
762 101 007		4	4510	25	Pipe multilayer in bars of 5,0 m d 25 mm
762 101 008		4	4510	32	Pipe multilayer in bars of 5,0 m d 32 mm
762 101 011		5	4515	25	Pipe PB in protective pipe d 25 mm
762 101 012		5	4515	16	Pipe PB in protective pipe d 16 mm
762 101 013		5	4515	20	Pipe PB in protective pipe d 20 mm
762 101 014		4	4500	16	Pipe multilayer without protective pipe d 16 mm
762 101 017		6	4525	16	Cap for adaptor d 16 mm
762 101 018		20	4530	16 / 20	Single pipe outlet Rp 1/2 inch
762 101 019		20	4530	16 / 20	Single pipe outlet Rp ¾ inch
762 101 022		21	4535	16 / 20	Dual pipe outlet Rp 1/2 inch
762 101 023		19	4545	16 / 20	WC single connection module concealed Rp 1/2 inch
762 101 024		5	4502	16	Pipe multilayer insulated 6 mm d 16 mm
762 101 025		19	4546	16 / 20	Pipe outlet for flushing cistern Meplafix d 16 / 20 mm
762 101 026		19	4548	16 / 20	Pipe outlet for flushing cistern Meplafix d 16 / 20 mm
762 101 027		6	4525	25	Cap for adaptor d 25 mm
762 101 030		6	4520	16	Adaptor d 16 mm
762 101 031		6	4520	20	Adaptor d 20 mm
762 101 032		5	4502	20	Pipe multilayer insulated 6 mm d 20 mm
762 101 034		6	4520	25	Adaptor d 25 mm
762 101 035		6	4520	32	Adaptor d 32 mm
762 101 038		10	4605	16 / 20	Transition male thread module R 1/2 inch
762 101 039		10	4605	16 / 20	Transition male thread module R ¾ inch
762 101 040		10	4610	16 / 20	Transition female thread module Rp 1/2 inch
762 101 041		10	4610	16 / 20	Transition female thread module Rp ¾ inch
762 101 042		7	4595	16 / 20	Tee equal module d 16 / 20 mm
762 101 043		5	4502	25	Pipe multilayer insulated 6 mm d 25 mm
762 101 044		7	4585	16 / 20	Socket/Reducing bush module d 16 / 20 mm
762 101 046		7	4590	16 / 20	Elbow 90° module d 16 / 20 mm
762 101 047		20	4547	16 / 20	Single pipe outlet 1/2" - ¾" Rp 1/2 inch
762 101 048		22	4550	16 / 20	Manifold module outlet 2-fold
762 101 049		22	4550	16 / 20	Manifold module outlet 3-fold
762 101 051		11	4620	16 / 20	Transition elbow male thread-module R 1/2 inch
762 101 052		11	4620	16 / 20	Transition elbow male thread-module R ¾ inch
762 101 053		22	4550	16 / 20	Manifold module outlet 4-fold
762 101 055		11	4625	16 / 20	Transition tee female thread-module Rp 1/2 inch
762 101 056		10	4615	16 / 20	Union flat seal module G ¾ inch
762 101 057		12	4606	16 / 20	iFIT-INSTAFLEX module d1 16 mm
762 101 058		12	4606	16 / 20	iFIT-INSTAFLEX module d1 20 mm
762 101 059		12	4606	25 / 32	iFIT-INSTAFLEX module d1 25 mm
762 101 060		12	4606	25 / 32	iFIT-INSTAFLEX module d1 32 mm
762 101 067		12	4606	16 / 20	iFIT-INSTAFLEX module d1 25 mm
762 101 068		26	4570	16 / 20	Cross-Tee module d 16 / 20 mm
762 101 070		20	4530	16 / 20	Single pipe outlet Rp 1/2 inch
762 101 071		21	4535	16 / 20	Dual pipe outlet Rp 1/2 inch
762 101 076		5	4502	16	Pipe multilayer insulated 9 mm d 16 mm
762 101 078		5	4502	20	Pipe multilayer insulated 9 mm d 20 mm
762 101 082		5	4502	25	Pipe multilayer insulated 9 mm d 25 mm

Code	SP	Page	Cat-No	Dimension	Article
762 101 086		5	4502	16	Pipe multilayer insulated 13 mm d 16 mm
762 101 089		18	4671	16 / 20	iFIT - Copper module d2 10 mm
762 101 090		5	4502	20	Pipe multilayer insulated 13 mm d 20 mm
762 101 091		10	4605	25 / 32	Transition male thread module R 3/4 inch
762 101 092		10	4605	25 / 32	Transition male thread module R 1 inch
762 101 093		10	4610	25 / 32	Transition female thread module Rp 3/4 inch
762 101 094		10	4610	25 / 32	Transition female thread module Rp 1 inch
762 101 095		10	4615	25 / 32	Union flat seal module G 3/4 inch
762 101 096		10	4615	25 / 32	Union flat seal module G 1 inch
762 101 097		10	4615	25 / 32	Union flat seal module G 1 1/4 inch
762 101 098		10	4615	25 / 32	Union flat seal module G 1 1/2 inch
762 101 099		11	4620	25 / 32	Transition elbow male thread-module R 3/4 inch
762 101 100		11	4620	25 / 32	Transition elbow male thread-module R 1 inch
762 101 101		11	4630	16 / 20	Transition elbow female thread-module Rp 1/2 inch
762 101 103		11	4625	25 / 32	Transition tee female thread-module Rp 3/4 inch
762 101 104		5	4502	25	Pipe multilayer insulated 13 mm d 25 mm
762 101 105		11	4630	16 / 20	Transition elbow female thread-module Rp 3/4 inch
762 101 108		27	4645	16 / 20	Pipe shears d16-d20 for pipes ML- and PB d 16 / 20
762 101 109		27	4645	Spare blades	Pipe shears d16-d20 for pipes ML- and PB d Spare blades
762 101 112		27	4650	16	Outside pipe bending tool for pipes ML d 16 mm
762 101 113		27	4650	20	Outside pipe bending tool for pipes ML d 20 mm
762 101 114		27	4650	25	Outside pipe bending tool for pipes ML d 25 mm
762 101 115		27	4650	32	Outside pipe bending tool for pipes ML d 32 mm
762 101 116		27	4640	16	Chamfering tool for pipes ML- and PB d 16 mm
762 101 117		27	5300	16 - 32	Pipe cutter d16-d32 for pipes ML- and PB d 16 - 32
762 101 118		27	5300	Spare blades	Pipe cutter d16-d32 for pipes ML- and PB d Spare blades
762 101 119		27	4651		Tool belt
762 101 120		27	4640	20	Chamfering tool for pipes ML- and PB d 20 mm
762 101 122		27	4635	16 / 20	Tool set for pipes ML- and PB d 16 / 20 mm
762 101 125		27	4640	25	Chamfering tool for pipes ML- and PB d 25 mm
762 101 126		4	4516	16	Pipe PB without protective pipe d 16 mm
762 101 127		4	4516	20	Pipe PB without protective pipe d 20 mm
762 101 128		4	4516	25	Pipe PB without protective pipe d 25 mm
762 101 130		4	4500	25	Pipe multilayer without protective pipe d 25 mm
762 101 131		4	4500	32	Pipe multilayer without protective pipe d 32 mm
762 101 132		27	4640	32	Chamfering tool for pipes ML- and PB d 32 mm
762 101 133		27	4635	25 / 32	Tool set for pipes ML- and PB d 25 / 32 mm
762 101 150		28	4660	16	Wall inlet plug d 16 mm
762 101 151		28	4660	20	Wall inlet plug d 20 mm
762 101 152		28	4660	25	Wall inlet plug d 25 mm
762 101 153		28	4660	32	Wall inlet plug d 32 mm
762 101 154		28	4665	16	Pipe draw coupling d 16 mm
762 101 155		28	4665	20	Pipe draw coupling d 20 mm
762 101 175		7	4585	25 / 32	Socket/Reducing bush module d 25 / 32 mm
762 101 177		8	4586	25 / 32	Reducing bush module d1 25 / 32 mm
762 101 179		7	4590	25 / 32	Elbow 90° module d 25 / 32 mm
762 101 180		8	4591	25 / 32	Elbow 45° module d 25 / 32 mm
762 101 181		7	4595	25 / 32	Tee equal module d 25 / 32 mm
762 101 183		8	4600	25 / 32	Tee reduced module d1 25 / 32 mm
762 101 185		8	4600	25 / 32	Tee reduced module d1 25 / 32 mm
762 101 187		8	4600	25 / 32	Tee reduced module d1 25 / 32 mm
762 101 190		18	4680	16 / 20	iFIT-Press module d2 15 mm
762 101 191		18	4680	16 / 20	iFIT-Press module d2 18 mm
762 101 192		18	4680	25 / 32	iFIT-Press module d2 22 mm
762 101 193		18	4680	25 / 32	iFIT-Press module d2 28 mm
762 101 194		4	4505	16	Pipe multilayer with protective pipe d 16 mm
762 101 195		4	4505	20	Pipe multilayer with protective pipe d 20 mm
762 101 202		9	4592	16 / 20	Elbow 90° module with pipe outline d 16 / 20 mm
762 101 203		9	4592	25 / 32	Elbow 90° module with pipe outline d 25 / 32 mm
762 101 204		9	4602	16 / 20	Tee equal module with pipe outline d 16 / 20 mm
762 101 205		9	4602	25 / 32	Tee equal module with pipe outline d 25 / 32 mm
762 101 207		28	4661	16 / 20	Plug module-side d 16 / 20 mm
762 101 208		28	4661	25 / 32	Plug module-side d 25 / 32 mm
762 101 212		22	4551	25 / 32	Manifold module outlet 4-fold
762 101 213		22	4551	25 / 32	Manifold module outlet 3-fold

Numerial Product Range Catalog number

Cat-No	Dimension	SP	Page	Code	Article
3264	¾		23	760 869 989	Plug long R 3/4 inch
3266	1		23	760 853 706	Cap Rp 1 inch
3266	¾		23	760 853 794	Cap Rp 3/4 inch
3267	¾		23	760 853 792	Plug R 3/4 inch
3267	1		23	760 853 793	Plug R 1 inch
3268	¾		23	760 853 596	Cap long Rp 3/4 inch
3286			25	760 856 212	Mounting bracket M8 manifold 3286 3/4
3915	25		24	760 853 628	Dual Pipe clip, metal d 25 mm
3920	25		24	760 853 254	Single Pipe clip, metal d 25 mm
3920	30		24	760 853 567	Single Pipe clip, metal d 30 mm
3920	35		24	760 854 951	Single Pipe clip, metal d 35 mm
3921	16		24	760 854 986	Cap for protective pipe Colors red
3921	16		24	760 854 987	Cap for protective pipe Colors green
3921	20		24	760 854 988	Cap for protective pipe Colors red
3921	20		24	760 854 989	Cap for protective pipe Colors green
3930	16 - 40		24	760 853 283	Pipe binder d-d 16 - 40 mm
3930	50 - 75		24	760 853 284	Pipe binder d-d 50 - 75 mm
3930	90 - 110		24	760 854 984	Pipe binder d-d 90 - 110 mm
4500	16		4	762 101 000	Pipe multilayer without protective pipe d 16 mm
4500	20		4	762 101 001	Pipe multilayer without protective pipe d 20 mm
4500	16		4	762 101 014	Pipe multilayer without protective pipe d 16 mm
4500	25		4	762 101 130	Pipe multilayer without protective pipe d 25 mm
4500	32		4	762 101 131	Pipe multilayer without protective pipe d 32 mm
4502	16		5	762 101 024	Pipe multilayer insulated 6 mm d 16 mm
4502	20		5	762 101 032	Pipe multilayer insulated 6 mm d 20 mm
4502	25		5	762 101 043	Pipe multilayer insulated 6 mm d 25 mm
4502	16		5	762 101 076	Pipe multilayer insulated 9 mm d 16 mm
4502	20		5	762 101 078	Pipe multilayer insulated 9 mm d 20 mm
4502	25		5	762 101 082	Pipe multilayer insulated 9 mm d 25 mm
4502	16		5	762 101 086	Pipe multilayer insulated 13 mm d 16 mm
4502	20		5	762 101 090	Pipe multilayer insulated 13 mm d 20 mm
4502	25		5	762 101 104	Pipe multilayer insulated 13 mm d 25 mm
4505	16		4	762 101 003	Pipe multilayer with protective pipe d 16 mm
4505	20		4	762 101 004	Pipe multilayer with protective pipe d 20 mm
4505	16		4	762 101 194	Pipe multilayer with protective pipe d 16 mm
4505	20		4	762 101 195	Pipe multilayer with protective pipe d 20 mm
4510	16		4	762 101 005	Pipe multilayer in bars of 5,0 m d 16 mm
4510	20		4	762 101 006	Pipe multilayer in bars of 5,0 m d 20 mm
4510	25		4	762 101 007	Pipe multilayer in bars of 5,0 m d 25 mm
4510	32		4	762 101 008	Pipe multilayer in bars of 5,0 m d 32 mm
4515	25		5	762 101 011	Pipe PB in protective pipe d 25 mm
4515	16		5	762 101 012	Pipe PB in protective pipe d 16 mm
4515	20		5	762 101 013	Pipe PB in protective pipe d 20 mm
4516	16		4	762 101 126	Pipe PB without protective pipe d 16 mm
4516	20		4	762 101 127	Pipe PB without protective pipe d 20 mm
4516	25		4	762 101 128	Pipe PB without protective pipe d 25 mm
4520	16		6	762 101 030	Adaptor d 16 mm
4520	20		6	762 101 031	Adaptor d 20 mm
4520	25		6	762 101 034	Adaptor d 25 mm
4520	32		6	762 101 035	Adaptor d 32 mm
4525	16		6	762 101 017	Cap for adaptor d 16 mm
4525	25		6	762 101 027	Cap for adaptor d 25 mm
4530	16 / 20		20	762 101 018	Single pipe outlet Rp 1/2 inch
4530	16 / 20		20	762 101 019	Single pipe outlet Rp 3/4 inch
4530	16 / 20		20	762 101 070	Single pipe outlet Rp 1/2 inch
4535	16 / 20		21	762 101 022	Dual pipe outlet Rp 1/2 inch
4535	16 / 20		21	762 101 071	Dual pipe outlet Rp 1/2 inch
4545	16 / 20		19	762 101 023	WC single connection module concealed Rp 1/2 inch
4546	16 / 20		19	762 101 025	Pipe outlet for flushing cistern Meplafix d 16 / 20 mm
4547	16 / 20		20	762 101 047	Single pipe outlet 1/2" - 3/4" Rp 1/2 inch
4548	16 / 20		19	762 101 026	Pipe outlet for flushing cistern Meplafix d 16 / 20 mm
4550	16 / 20		22	762 101 048	Manifold module outlet 2-fold
4550	16 / 20		22	762 101 049	Manifold module outlet 3-fold
4550	16 / 20		22	762 101 053	Manifold module outlet 4-fold
4551	25 / 32		22	762 101 212	Manifold module outlet 4-fold
4551	25 / 32		22	762 101 213	Manifold module outlet 3-fold
4570	16 / 20		26	762 101 068	Cross-Tee module d 16 / 20 mm
4585	16 / 20		7	762 101 044	Socket/Reducing bush module d 16 / 20 mm
4585	25 / 32		7	762 101 175	Socket/Reducing bush module d 25 / 32 mm
4586	25 / 32		8	762 101 177	Reducing bush module d1 25 / 32 mm
4590	16 / 20		7	762 101 046	Elbow 90° module d 16 / 20 mm

Cat-No	Dimension	SP	Page	Code	Article
4590	25 / 32		7	762 101 179	Elbow 90° module d 25 / 32 mm
4591	25 / 32		8	762 101 180	Elbow 45° module d 25 / 32 mm
4592	16 / 20		9	762 101 202	Elbow 90° module with pipe outline d 16 / 20 mm
4592	25 / 32		9	762 101 203	Elbow 90° module with pipe outline d 25 / 32 mm
4595	16 / 20		7	762 101 042	Tee equal module d 16 / 20 mm
4595	25 / 32		7	762 101 181	Tee equal module d 25 / 32 mm
4600	25 / 32		8	762 101 183	Tee reduced module d1 25 / 32 mm
4600	25 / 32		8	762 101 185	Tee reduced module d1 25 / 32 mm
4600	25 / 32		8	762 101 187	Tee reduced module d1 25 / 32 mm
4602	16 / 20		9	762 101 204	Tee equal module with pipe outline d 16 / 20 mm
4602	25 / 32		9	762 101 205	Tee equal module with pipe outline d 25 / 32 mm
4605	16 / 20		10	762 101 038	Transition male thread module R 1/2 inch
4605	16 / 20		10	762 101 039	Transition male thread module R 3/4 inch
4605	25 / 32		10	762 101 091	Transition male thread module R 3/4 inch
4605	25 / 32		10	762 101 092	Transition male thread module R 1 inch
4606	16 / 20		12	762 101 057	iFIT-INSTAFLEX module d1 16 mm
4606	16 / 20		12	762 101 058	iFIT-INSTAFLEX module d1 20 mm
4606	25 / 32		12	762 101 059	iFIT-INSTAFLEX module d1 25 mm
4606	25 / 32		12	762 101 060	iFIT-INSTAFLEX module d1 32 mm
4606	16 / 20		12	762 101 067	iFIT-INSTAFLEX module d1 25 mm
4610	16 / 20		10	762 101 040	Transition female thread module Rp 1/2 inch
4610	16 / 20		10	762 101 041	Transition female thread module Rp 3/4 inch
4610	25 / 32		10	762 101 093	Transition female thread module Rp 3/4 inch
4610	25 / 32		10	762 101 094	Transition female thread module Rp 1 inch
4615	16 / 20		10	762 101 056	Union flat seal module G 3/4 inch
4615	25 / 32		10	762 101 095	Union flat seal module G 3/4 inch
4615	25 / 32		10	762 101 096	Union flat seal module G 1 inch
4615	25 / 32		10	762 101 097	Union flat seal module G 1 1/4 inch
4615	25 / 32		10	762 101 098	Union flat seal module G 1 1/2 inch
4620	16 / 20		11	762 101 051	Transition elbow male thread-module R 1/2 inch
4620	16 / 20		11	762 101 052	Transition elbow male thread-module R 3/4 inch
4620	25 / 32		11	762 101 099	Transition elbow male thread-module R 3/4 inch
4620	25 / 32		11	762 101 100	Transition elbow male thread-module R 1 inch
4625	16 / 20		11	762 101 055	Transition tee female thread-module Rp 1/2 inch
4625	25 / 32		11	762 101 103	Transition tee female thread-module Rp 3/4 inch
4630	16 / 20		11	762 101 101	Transition elbow female thread-module Rp 1/2 inch
4630	16 / 20		11	762 101 105	Transition elbow female thread-module Rp 3/4 inch
4635	16 / 20		27	762 101 122	Tool set for pipes ML- and PB d 16 / 20 mm
4635	25 / 32		27	762 101 133	Tool set for pipes ML- and PB d 25 / 32 mm
4640	16		27	762 101 116	Chamfering tool for pipes ML- and PB d 16 mm
4640	20		27	762 101 120	Chamfering tool for pipes ML- and PB d 20 mm
4640	25		27	762 101 125	Chamfering tool for pipes ML- and PB d 25 mm
4640	32		27	762 101 132	Chamfering tool for pipes ML- and PB d 32 mm
4645	16 / 20		27	762 101 108	Pipe shears d16-d20 for pipes ML- and PB d 16 / 20
4645	Spare blades		27	762 101 109	Pipe shears d16-d20 for pipes ML- and PB d Spare blades
4650	16		27	762 101 112	Outside pipe bending tool for pipes ML d 16 mm
4650	20		27	762 101 113	Outside pipe bending tool for pipes ML d 20 mm
4650	25		27	762 101 114	Outside pipe bending tool for pipes ML d 25 mm
4650	32		27	762 101 115	Outside pipe bending tool for pipes ML d 32 mm
4651			27	762 101 119	Tool belt
4660	16		28	762 101 150	Wall inlet plug d 16 mm
4660	20		28	762 101 151	Wall inlet plug d 20 mm
4660	25		28	762 101 152	Wall inlet plug d 25 mm
4660	32		28	762 101 153	Wall inlet plug d 32 mm
4661	16 / 20		28	762 101 207	Plug module-side d 16 / 20 mm
4661	25 / 32		28	762 101 208	Plug module-side d 25 / 32 mm
4665	16		28	762 101 154	Pipe draw coupling d 16 mm
4665	20		28	762 101 155	Pipe draw coupling d 20 mm
4671	16 / 20		18	762 101 089	iFIT - Copper module d2 10 mm
4680	16 / 20		18	762 101 190	iFIT-Press module d2 15 mm
4680	16 / 20		18	762 101 191	iFIT-Press module d2 18 mm
4680	25 / 32		18	762 101 192	iFIT-Press module d2 22 mm
4680	25 / 32		18	762 101 193	iFIT-Press module d2 28 mm
5300	16 - 32		27	762 101 117	Pipe cutter d16-d32 for pipes ML- and PB d 16 - 32
5300	Spare blades		27	762 101 118	Pipe cutter d16-d32 for pipes ML- and PB d Spare blades

GEORGE FISCHER SALES LIMITED (“George Fischer”) CONDITIONS OF SALE (FOR GOODS AND SERVICES)

GEORGE FISCHER SALES LIMITED (“George Fischer”) CONDITIONS OF SALE (FOR GOODS AND SERVICES)

1 INTERPRETATION

- 1.1 In these conditions of sale the following words will (unless the context otherwise requires) have the following meanings: “Conditions” means the conditions set out below and overleaf. “Contract” means any contract between George Fischer and the Customer for the sale of any Works. “Customer” means the company, firm, body or person purchasing the Works. “Customer’s Property” means any dies, tools, patterns, drawings, specifications, designs, packagings and any other equipment, goods, materials, instructions or information supplied by or on behalf of the Customer to George Fischer in connection with the Works. “Goods” means any goods agreed in the Contract to be provided by George Fischer to the Customer (including but not limited to the whole or parts of them, any raw materials, finished or semi-finished materials, machinery, parts, spares, commodities and any materials, articles and commodities supplied in connection with the Services). “Services” means any services agreed in the Contract to be provided by George Fischer to the Customer (including but not limited to the whole or any part or parts of them). “Works” means the Goods and/or the Services (as appropriate).
- 1.2 Any reference in these Conditions to any statute or statutory provision will (unless the context otherwise requires) be construed as a reference to that statute or statutory provision as may be amended, consolidated, modified, extended, re-enacted or replaced from time to time.
- 1.3 The headings in these Conditions are for reference only and will not affect the interpretation of these Conditions.
- 1.4 In these Conditions the words “unless otherwise agreed in writing” will mean unless otherwise agreed in writing and signed by a director or commercial manager of George Fischer.
- 1.5 George Fischer reserves the right at anytime to correct any clerical, typographical or other similar errors made by its employees.

2 QUOTATIONS

- 2.1 Any quotation (whether written or oral) is given on the basis that no contract will come into existence otherwise than in accordance with the provisions of clauses 3.5 and 3.6.
- 2.2 Unless otherwise agreed in writing any quotation is valid only for a period of 45 days from its date of issue provided that George Fischer has not previously withdrawn it by written or oral notice to the Customer.
- 2.3 Any quotation is based on the instructions and information provided by the Customer and George Fischer reserves the right to amend the quotation at any time to cover any increase in price which may arise as a result of additional or incomplete instructions or information.

3 APPLICATION OF TERMS

- 3.1 (Subject to clause 3.4) these Conditions are the only conditions on which George Fischer is prepared to deal with the Customer and they will apply to all Contracts to the exclusion of any other terms and conditions including but not limited to those which the Customer purports to apply.
- 3.2 No terms or conditions endorsed upon, delivered with, referred to or stipulated or contained in any purchase order or other similar document delivered or sent by the Customer to George Fischer will form part of the Contract.
- 3.3 Any reference overleaf to the Customer’s purchase order or other similar document will not be deemed to imply that any terms or conditions endorsed upon, delivered with, referred to or stipulated or contained in such purchase order or other similar document will have effect to the exclusion or amendment of these Conditions.
- 3.4 Any variation to these Conditions and any representation about the Works will only be effective if it is agreed in writing, contains a specific reference to these Conditions and is signed by a director or commercial manager of both parties.
- 3.5 Each purchase order for Works issued by the Customer will be deemed to be an offer by the Customer to purchase Works subject to these Conditions.
- 3.6 No purchase order placed by the Customer will be deemed to be accepted by George Fischer until a written acknowledgement of order is issued by George Fischer or (if earlier) George Fischer commences the Works or supplies the Works to the Customer.
- 3.7 The Customer must ensure that the content of its order and any applicable specification are complete and accurate.
- 3.8 Unless otherwise agreed in writing all drawings, illustrations, descriptions, specifications, technical data, advertising and other similar information issued by George Fischer or contained in George Fischer’s catalogues, brochures, trade literature, price lists or other similar published materials are issued or published only for the purpose of giving an approximate idea of the Works described in them and will not form part of the Contract.
- 3.9 Any purchase order which has been accepted by George Fischer in accordance with clause 3.5 and 3.6 may only be amended, cancelled, postponed or varied by the Customer with the prior written consent of George Fischer and on terms that the Customer will indemnify George Fischer in full against all losses (including but not limited to loss of profit), costs, damages, charges and expenses incurred (directly or indirectly) by George Fischer as a result of such amendment, cancellation, postponement or variation.

4 DELIVERY

- 4.1 Any times specified or agreed by George Fischer for the delivery of the Works are given in good faith but are an estimate only. If no time is specified or agreed by George Fischer delivery will take place within a reasonable time. Unless otherwise agreed in writing time for the delivery of the Works will not be of the essence of the Contract.
- 4.2 George Fischer will use its reasonable endeavours to deliver the Works within the times set out in clause 4.1 but George Fischer will not be liable for the consequences of any delay or failure to deliver if the duration of the delay is not substantial or if the delay or failure is due to any circumstances beyond George Fischer’s reasonable control or of an unexpected or exceptional nature.
- 4.3 (Subject to the provisions of clause 4.4 delivery will be deemed to take place when the Works are delivered to the Customer at such place as the parties may agree except that delivery to a carrier for the purpose of transmission to the Customer will be deemed to be delivery to the Customer and sections 32(2) and (3) of the Sale of Goods Act 1979 will not apply.
- 4.4 If George Fischer agrees to permit the Customer to collect the Works from George Fischer’s place of business then delivery will be deemed to take place when George Fischer notifies the Customer that the Works are ready for collection and unless otherwise agreed in writing the Customer will collect the Works within 3 working days of the issue of such notice.
- 4.5 George Fischer will use its reasonable endeavours to ensure where necessary that the Works will be packed so as to be adequately protected against damage in normal conditions of transit of usual duration. George Fischer will make such arrangements for the carriage and insurance of the Works as it agrees with the Customer.
- 4.6 George Fischer may deliver the Works in instalments. Deliveries of further instalments may be withheld until the Works comprised in earlier instalments have been paid for in full. Default by George Fischer (howsoever caused) in respect of one or more instalments will not entitle the Customer to terminate the relevant Contract as a whole.
- 4.7 In the event of any delay in the delivery of any Goods and/or the performance of any Services which are attributable to the Customer’s acts or omissions then:
 - (a) delivery of the Goods and/or performance of the Services will be deemed to have taken place at the time at which but for such delay or delays such delivery or performance would have taken place and any extra costs incurred as a result of such delay or delays will be added to the Contract price and will be payable by the Customer; and
 - (b) George Fischer may sell such Goods 28 days after such delay and deduct any monies payable to George Fischer by the Customer from the sale proceeds and account to the Customer for any excess or charge the Customer for any shortfall.
- 4.8 Where the Works are to be supplied from stock such supply is subject to the availability of the stock at the date of delivery.
- 4.9 On delivery to the Customer all Works should be examined. (Subject to clause 8.2) George Fischer will not be liable for any shortages in or non-delivery of the Works (even if caused by George Fischer’s negligence) unless the same is notified in writing by the Customer to George Fischer (together with all relevant details) within 14 days of the actual or anticipated date of delivery (as appropriate). Subject to such notice being provided George Fischer will, if it is reasonably satisfied that any Works have not been delivered as a result of George Fischer’s fault (in its sole discretion) either arrange for delivery as soon as reasonably possible or give credit (at the pro rata Contract price) to the Customer for such Works. Any shortages in or non-delivery of part of the Works will not affect the Contract in respect of the other parts of the Works.
- 4.10 If George Fischer complies with clause 4.9 it will (subject to clause 8.2) have no further liability (in contract, tort (including but not limited to negligence) or otherwise) for such shortages or non-delivery.

- 4.11 Whilst George Fischer will use reasonable endeavours to supply the exact quantity of the Works ordered by the Customer, George Fischer may supply and the Customer will accept up to 10% more or less than the exact quantity ordered. A pro rata charge or allowance at the Contract price will be made to cover any such variation.
- 4.12 The Customer (at its own expense) will ensure that the place where delivery of the Goods or performance of the Services is to take place is adequate and appropriate for such delivery or performance and will provide such access, equipment, facilities, protection, manual labour and information as may be required to enable George Fischer to perform its obligations under the Contract.

5 RISK AND OWNERSHIP

- 5.1 Unless otherwise agreed in writing the Works are at the risk of the Customer from the time of delivery or deemed delivery to the Customer (as appropriate) and loading and off loading (as appropriate) will be at the Customer’s risk. Section 20(2) of the Sale of Goods Act 1979 will not apply.
- 5.2 (Notwithstanding that risk in the Works will pass to the Customer in accordance with the provisions of clause 5.1) ownership of the Works (both legal and equitable) will only pass to the Customer (other than when ownership is properly vested in some other person by the operation of any statute) when George Fischer has received in full (in cash or cleared funds) all monies due to it from the Customer:
 - (a) in respect of the Works; and
 - (b) all other sums which are or which become due to George Fischer from the Customer on any account.
- 5.3 Until ownership of the Works has passed to the Customer under clause 5.2, the Customer will:
 - (a) hold the Works on a fiduciary basis as George Fischer’s bailee;
 - (b) keep the Works free from any charge, lien or other encumbrance;
 - (c) store the Works (at no cost to George Fischer) separately from all other materials of the Customer or any third party in such a way that they remain readily identifiable as George Fischer’s property;
 - (d) not destroy, deface or obscure any identifying mark on the Works or their packaging;
 - (e) maintain the Works in a satisfactory condition, insured on George Fischer’s behalf for their full price against all risks to the reasonable satisfaction of George Fischer and on request produce such policy of insurance to George Fischer;
 - (f) hold all proceeds of the insurance referred to in clause 5.3
 - (g) on trust for George Fischer and not mix it with any other money or pay the proceeds into any overdrawn bank account; and
 - (g) not attach the Works to any real property without George Fischer’s consent.
- 5.4 The Customer may resell, use or otherwise dispose of the Works before ownership has passed to it only if any such sale, use or disposition will be effected in the ordinary course of the Customer’s business and will be a sale, use or disposition of George Fischer’s property on the Customer’s own behalf and the Customer will deal as principal.
- 5.5 George Fischer may while the owner of the Works (and without prejudice to any other rights it may have under or by virtue of these Conditions) demand the immediate return of the Works at any time and the Customer will forthwith comply with such demand and bear the expenses for such return.
- 5.6 The Customer grants to George Fischer (or its successors in title for the Works) and their respective employees and agents an irrevocable licence to enter at any time any premises where the Works are or may be situated for the purpose of inspecting or removing any such Works the ownership in which has remained with George Fischer.
- 5.7 George Fischer will be entitled to recover payment for the Works notwithstanding that ownership of any of the Works has not passed from George Fischer.
- 5.8 The Works will be deemed sold or used in the order delivered to the Customer.


6 PRICE AND PAYMENT

- 6.1 The price stated in the Contract is based on the cost to George Fischer of materials, fuel, power, transport, taxes, duties, services, labour and all other costs at the date of George Fischer’s quotation, acknowledgement of order or supply (whichever is earlier). If at the date of delivery or deemed delivery of the Works there has been any increase in all or any of such costs, the price payable for the Works may be increased by George Fischer accordingly.
- 6.2 Quotations given in a currency other than sterling are based on the rate of exchange at the time of quoting and (unless otherwise agreed in writing between the parties) the price may be subject to revision if any different rate of exchange is ruling at the date of invoice.
- 6.3 (Unless otherwise agreed) the price for the Works is exclusive of any value added tax (and any other tax or duty relating to the manufacture, transportation, sale or delivery of the Works) and any costs or charges in relation to export and/or import, packaging, loading, unloading, carriage and insurance. Such costs and expenses will be paid by the Customer in addition to the price for the Works at the same time that it is due to pay for the Works.
- 6.4 Where George Fischer agrees (in its discretion) to bring forward the date of delivery of the Works at the Customer’s request any overtime or other additional costs reasonably incurred by George Fischer shall be charged to the Customer in addition to the Contract price.
- 6.5 George Fischer may invoice the Customer for the Works at any time after the delivery of the Works or the delivery of any instalment (as appropriate). If any delivery is postponed at the request or by the default of the Customer then George Fischer may submit its invoice at any time after the Works are ready for delivery or would have been ready in the ordinary course but for the request or default on the part of the Customer.
- 6.6 Customers who have been granted by George Fischer (in its sole discretion) a credit account facility will pay the price within 30 days of the end of the month in which the Works are despatched. George Fischer may (in its sole discretion) amend the terms of or withdraw such credit account facility at any time without notice with immediate effect and on such withdrawal all amounts due or accruing to George Fischer under the Contract will become immediately payable despite any other provision of these Conditions.
- 6.7 Customers who have not been granted a credit account facility will pay the price 5 working days prior to delivery of the Works.
- 6.8 No payment will be deemed to have been received until George Fischer has received cleared funds.
- 6.9 Time for payment will be of the essence of the Contract and the Customer will indemnify George Fischer against all expenses and legal costs incurred by George Fischer in recovering overdue amounts.
- 6.10 All payments payable to George Fischer under the Contract will become due immediately on termination of this Contract despite any other provision of these Conditions.
- 6.11 The Customer will make all payments due under the Contract without any deduction whether by way of set-off, counterclaim, discount, abatement or otherwise unless the Customer has a valid court order requiring an amount equal to such deduction to be paid by George Fischer to the Customer.
- 6.12 If the Customer fails to pay George Fischer any sum due pursuant to the Contract the Customer will be liable to pay interest to George Fischer on such sum from the due date for payment at an annual rate of 4% above the base lending rate of HSBC Bank plc from time to time accruing on a daily basis until payment is made in full (whether before or after any judgement). In the alternative, George Fischer in its absolute discretion, reserves the right to claim interest and compensation payments under the Late Payment of Commercial Debts (Interest) Act 1998.
- 6.13 Without prejudice to the provisions of clause 6.12 if the Customer fails or George Fischer reasonably believes that the Customer will fail to pay for the Work when due George Fischer may demand payment of all outstanding balances whether due or not, treat the Contract as repudiated by the Customer or suspend any future performance of the Contract or any other contract with the Customer until all overdue sums have been paid.

7 QUALITY

- 7.1 George Fischer warrants (subject to the provisions of this clause 7) that:
 - (a) on delivery of the Goods and for a period of 12 months from the date of delivery, the Goods will:
 - (i) be of satisfactory quality, within the meaning of the Sale of Goods Act 1979 (as amended); and
 - (ii) be reasonably fit for any particular purpose for which the Works are commonly supplied or are being bought (if the Customer has made known that purpose to George Fischer in writing and George Fischer has confirmed in writing that it is reasonable for the Customer to rely on the skill and judgement of George Fischer);
 - (b) and the Services will be performed with reasonable skill and care by properly qualified and experienced persons.

The above Terms of Business effective from 29th June 2007

For latest prices and delivery to your door visit MyTub Ltd - 0844 556 1818 - www.mytub.co.uk - info@mytub.co.uk 

GEORGE FISCHER SALES LIMITED ("George Fischer")

CONDITIONS OF SALE (FOR GOODS AND SERVICES) (Continued)


- 7.2 George Fischer will not be liable for any breach of any of the warranties in clause 7.1 unless:
- (a) the Customer gives written notice of the defect to George Fischer within 28 days of the date when the Customer discovers or ought reasonably to have discovered the defect;
 - (b) (if the defect is as a result of damage in transit) the Customer gives written notice of the defect to the carrier in the manner and within the appropriate time limit as set out in the carrier's terms of business; and George Fischer is given a reasonable opportunity after receiving such notice to examine such Works and the Customer (if requested to do so by George Fischer) returns such Works to George Fischer's place of business (at the Customer's cost) for the examination to take place there.
- 7.3 George Fischer will not be liable for a breach of any of the warranties in clause 7.1 where and to the extent that:
- (a) the defect arises from the Customer's Property or as a result of the Customer's negligence;
 - (b) the defect arises as a result of fair wear and tear, misuse, wilful damage, or abnormal working conditions;
 - (c) the defect arises as a result of any parts, materials or equipment not manufactured or workmanship not performed by George Fischer;
 - (d) the Customer makes any further use of such Works after giving written notice of the defect;
 - (e) the defect arises because the Customer has failed to follow George Fischer's instructions (whether oral or in writing) as to the storage, assembly, installation, commissioning, use, processing, handling or maintenance of the Works or (if there are none) good trade practice;
 - (f) the defect arises as a result of any installation, testing or commissioning of the Works performed by the Customer or any third party; or
 - (g) the defect arises as a result of any alteration, servicing or repair of the Works not made by George Fischer and without the written consent of George Fischer.
- 7.4 [Subject to clauses 7.2 and 7.3] if any of the Works do not conform with any of the warranties set out in clause 7.1 George Fischer will at its option and cost repair or replace such Goods (or the defective part), re-perform such Services or refund the price of such Works at the pro rata Contract rate.
- 7.5 If George Fischer complies with clause 7.4 it will [subject to clause 8.2] have no further liability (in contract, tort (including but not limited to negligence) or otherwise) for breach of any of the warranties in clause 7.1 in respect of such Works.
- 7.6 Any Goods replaced by George Fischer in accordance with the provisions of clause 7.4 will belong to George Fischer and any repaired or replacement Goods will be guaranteed on these terms for the unexpired portion of the original 12 month warranty period.
- ### 8 LIMITATION OF LIABILITY
- THE PRICES CHARGED FOR THE WORKS ARE BASED STRICTLY ON THE UNDERSTANDING OF ACCEPTANCE BY THE CUSTOMER OF THE PROVISIONS IN THE CONTRACT FOR THE LIMITATION OF GEORGE FISCHER'S LIABILITY. SHOULD THE CUSTOMER WISH GEORGE FISCHER TO ACCEPT ADDITIONAL LIABILITY THIS MAY BE DISCUSSED BETWEEN THE PARTIES AND THE PRICE MAY BE INCREASED ACCORDINGLY.
- 8.1 All warranties, conditions and other terms implied by statute or common law (except for the conditions implied by section 12 of the Sale of Goods Act 1979 and section 2 of the Supply of Goods and Services Act 1982) are, to the fullest extent permitted by law, excluded from the Contract.
- 8.2 Nothing in these Conditions excludes or limits the liability of George Fischer for fraudulent misrepresentation or for any death or personal injury caused by George Fischer's negligence or for any breach of the conditions implied by section 12 of the Sale of Goods Act 1979 and section 2 of the Supply of Goods and Services Act 1982.
- THE CUSTOMER'S ATTENTION IS IN PARTICULAR DRAWN TO THE PROVISIONS OF CLAUSES 8.3 AND 8.4.
- 8.3 [Subject to clause 8.1 and 8.2] George Fischer will not be liable to the Customer in contract, tort (including but not limited to negligence), misrepresentation or otherwise for any:
- (a) economic loss of any kind (including but not limited to direct or indirect loss of profit, business, contracts, revenue or anticipated savings);
 - (b) damage to the Customer's reputation or goodwill;
 - (c) product recall costs; or
 - (d) any special, indirect or consequential loss or damage (even if George Fischer has been advised of such loss or damage) arising out of or in connection with the Contract.
- 8.4 [Subject to the provisions of clause 8.2 and 8.3]
- ### 9 THE CUSTOMER'S PROPERTY
- 9.1 While George Fischer will take reasonable care of the Customer's Property whilst it is in George Fischer's possession, control or custody the Customer's Property will [unless otherwise agreed in writing] remain at the Customer's risk and all replacements and alterations of and repairs to the Customer's Property will be the Customer's responsibility.
- 9.2 George Fischer will not be liable for any loss or damage to the Customer's Property unless such loss or damage arises as a direct result of George Fischer's negligence. Where George Fischer is liable under this clause 9.2 George Fischer's liability to the Customer will be limited to the actual cost of the replacement or repair of the loss or damage to the Customer's Property.
- 9.3 The Customer will ensure that the Customer's Property is in good condition and suitable for use by George Fischer in the performance of the Contract and while George Fischer will use reasonable endeavours to verify any relevant aspects of the Customer's Property no responsibility is accepted by George Fischer for its accuracy.
- 9.4 Any defect in the Works which is due in whole or in part to the Customer's Property will not entitle the Customer to terminate the Contract, reject the Works, make any deductions from the Contract price or claim damages in respect of such defect.
- 9.5 The Customer will keep George Fischer indemnified in full against all liability, loss, damage, injury, claim, action, demand, expense or proceeding awarded against or incurred by George Fischer as a result of or in connection with the use by George Fischer of the Customer's Property unless such liability, loss, damage, injury, claim, action, demand, expense or proceeding is the result of George Fischer's negligent acts or omissions.
- ### 10 TOLERANCES AND TESTS
- 10.1 Unless otherwise agreed in writing gauges, weights, chemical composition and analysis, quantities and sizes will, so far as possible, be adhered to but reasonable excesses and deficiencies will be accepted by the Customer, who will not be entitled to reject any Works on the ground that they are not precisely as specified.
- 10.2 Unless otherwise agreed in writing, all tests, test pieces and inspections required by the Customer and agreed by George Fischer will be charged extra. All tests and inspections will take place under George Fischer's standard testing arrangements, and such tests will be final (except in the case of manifest error). All tests are subject to analytical tolerances.
- 10.3 The Customer may attend (at its own cost) all tests provided that it notifies George Fischer in writing of its intention to do so. The Customer will then be given not less than 5 working day's prior notice of the proposed date and time of any test and, if the Customer fails to attend, the test will proceed in its absence although it will be deemed to have been made in its presence.
- ### 11 OWNERSHIP OF TOOLING
- 11.1 Where patterns, dies, tools, drawings and equipment are not supplied by the Customer, only those which are specially made by George Fischer and separately charged to the Customer in full, will, when paid for by the Customer, become the property of the Customer.
- 11.2 George Fischer reserves the right to destroy or otherwise dispose of patterns, dies, tools, drawings and equipment in its possession, control or custody (whether or not the property of the Customer) from which the Customer has not required any Works to be made for a period of 12 months or more.
- ### 12 PACKING CASES AND PACKING MATERIALS
- 12.1 Unless otherwise agreed in writing packing cases and packing materials will not be charged extra but, where stated to be returnable, will be returned to George Fischer in good condition, within one month of receipt by the Customer. Where not returnable, the Customer will dispose of all packing in accordance with all regulations (whether statutory or otherwise) relating to the protection of the environment.
- ### 13 CONFIDENTIALITY
- 13.1 The Customer will keep confidential all technical data, commercial information, know how, specifications, inventions, processes, initiatives and other information which is of a confidential nature and which has been disclosed to the Customer by George Fischer and/or any member of the George Fischer group and/or its agents and any other confidential information concerning the business of George Fischer and/or any member of the George Fischer group or its products which the Customer may obtain ("Confidential Information").
- 13.2 The Customer will restrict disclosure of the Confidential Information to such of its employees, agents or subcontractors as need to know the same and will ensure that such employees, agents or subcontractors are subject to equivalent obligations of confidentiality as bind the Customer.
- 13.3 The Customer will not without the prior written consent of George Fischer publish or disclose the Confidential Information to any third party or make any use of the Confidential Information except to the extent necessary to implement the Contract.
- ### 14 INTELLECTUAL PROPERTY
- 14.1 The Customer will keep George Fischer indemnified in full against all liability, loss, damage, injury, claim, action, demand, expense or proceeding in respect of any infringement or alleged infringement of any patent, registered design, unregistered design, design copyright, trademark or other industrial or intellectual property rights resulting from any use by George Fischer of the Customer's Property or any compliance by George Fischer with the Customer's instructions, whether express or implied.
- 14.2 [Unless otherwise agreed in writing] ownership in all intellectual property rights subsisting in, resulting from or relating to the Works or any associated plans, descriptions, blue prints, designs, technical information, drawings, documents or specifications (except where these relate solely to the Customer's Property) will vest in or be assigned to George Fischer. If the Customer in any way acquires any such rights it will promptly inform George Fischer and take such steps as George Fischer may reasonably require to assign such rights or vest such title in George Fischer.
- 14.3 Nothing in these Conditions will be construed as any representation or warranty by George Fischer that the design, manufacture, use or sale of the Works is not an infringement of any third party intellectual property rights.
- ### 15 TERMINATION
- 15.1 George Fischer may terminate the Contract (and all other contracts between George Fischer and the Customer) immediately if:
- (a) the Customer fails to pay the price on the due date;
 - (b) the Customer is in breach of any term of the Contract and has failed to remedy such breach within 28 days of receipt of written notice specifying the breach and requiring it to be remedied;
 - (c) there is a material change in the ownership or control of the Customer; or
 - (d) the Customer is wound up or becomes insolvent or has a receiver or administrative receiver appointed or suffers the appointment or the presentation of a petition for the appointment of an administration or any equivalent or analogous event occurs in any relevant jurisdiction.
- 15.2 The termination of the Contract (howsoever arising) will be without prejudice to any rights and remedies which may have accrued to either party.
- 15.3 Any Conditions which impliedly have effect after termination or expiry will continue to be enforceable notwithstanding termination or expiry.
- ### 16 EXPORT SALES
- 16.1 Where the Works are supplied for export from the United Kingdom the provisions of this clause 16 will (subject to any special terms agreed in writing between the parties) apply despite any other provision of these Conditions.
- 16.2 The Uniform Laws on International Sales Act 1967 will not apply.
- 16.3 Unless otherwise agreed in writing the currency will be pounds sterling. The Customer will establish and maintain in favour of George Fischer an irrevocable and confirmed letter of credit in English with a UK clearing bank payable on drafts drawn at sight on presentation to the bank by George Fischer of a certified copy of George Fischer's invoice. All bank charges and other expenses in relation to the letter of credit will be borne by the Customer.
- 16.4 Unless otherwise agreed in writing Works will be sold C.I.F. (as defined in INCOTERMS 2000 Edition).
- 16.5 The Customer will be responsible for complying with and shall comply with any legislation or regulation governing the export of the Works:
- (a) from the United Kingdom; and/or
 - (b) [where the Works are sourced from a country other than the United Kingdom] from such country and the importation of the Works into the country of destination and for payment of any relevant duties or taxes whether payable by the Customer or George Fischer.
- 16.6 Unless otherwise agreed in writing packing cases and packing materials will be charged extra but, where stated to be returnable, will be credited in full on return to George Fischer's place of business (carriage paid) in good condition, within one month of receipt by the Customer. Where not returnable, the Customer will dispose of all packing in accordance with all regulations (whether statutory or otherwise) relating to the protection of the environment.
- ### 17 LIEN
- George Fischer will have in respect of unpaid debts due to it from the Customer a general lien on all property of the Customer which is in George Fischer's possession for whatever reason and whether worked upon or not.
- ### 18 ASSIGNMENT AND SUBCONTRACTING
- 18.1 The Customer will not without the prior written consent of George Fischer assign or transfer the Contract or any part of it to any other person.
- George Fischer may without the prior written consent of the Customer assign, transfer or subcontract the Contract or any part of it to any other person.
- ### 19 GENERAL
- 19.1 Each right or remedy of George Fischer under these Conditions is without prejudice to any other right or remedy which George Fischer may have under these Conditions or otherwise.
- 19.2 Any notice or document shall be deemed served, if delivered by hand, at the time of delivery, if posted, 48 hours after posting and if sent by facsimile transmission, at the time of transmission. George Fischer may also send a notice or document by electronic communication in an e-mail address notified to George Fischer by the Customer. Such notice or document shall be deemed served if sent by e-mail transmission 48 hours after the time of transmission.
- 19.3 The illegality, invalidity or unenforceability of any provision of these Conditions will not affect the legality, validity or unenforceability of any other provisions of these Conditions.
- 19.4 Failure or delay by either party in exercising any right or remedy provided by the Contract or by law will not be construed as a waiver of such right or remedy or a waiver of any other right or remedy.
- 19.5 A person who is not a party to the Contract will have no right under the Contracts (Rights of Third Parties) Act 1999 to enforce any term of the Contract. This clause 19.5 does not affect any right or remedy of any person which exists or is available otherwise than pursuant to that Act.
- 19.6 The Customer agrees that it will have no remedy in respect of any untrue statement innocently or negligently made by or on behalf of George Fischer prior to the Contract upon which the Customer relied in entering into the Contract whether such statement was made orally or in writing unless the statement has been expressly agreed in writing by a director of George Fischer and/or the statement has been expressly incorporated in writing into the Contract.
- 19.7 George Fischer shall not be in breach of these Conditions or otherwise liable to the Customer by reason of any delay in performance or non-performance of any of its obligations due to any circumstances outside George Fischer's reasonable control.
- 19.8 The Contract will be governed by English law and the parties submit to the non-exclusive jurisdiction of the English courts.



GEORG FISCHER
PIPING SYSTEMS

George Fischer Sales Limited,
Paradise Way, Coventry CV2 2ST
Telephone: 024 7653 5535 Fax: 024 7653 0450
www.georgfischer.co.uk
email: uk.ps@georgfischer.com

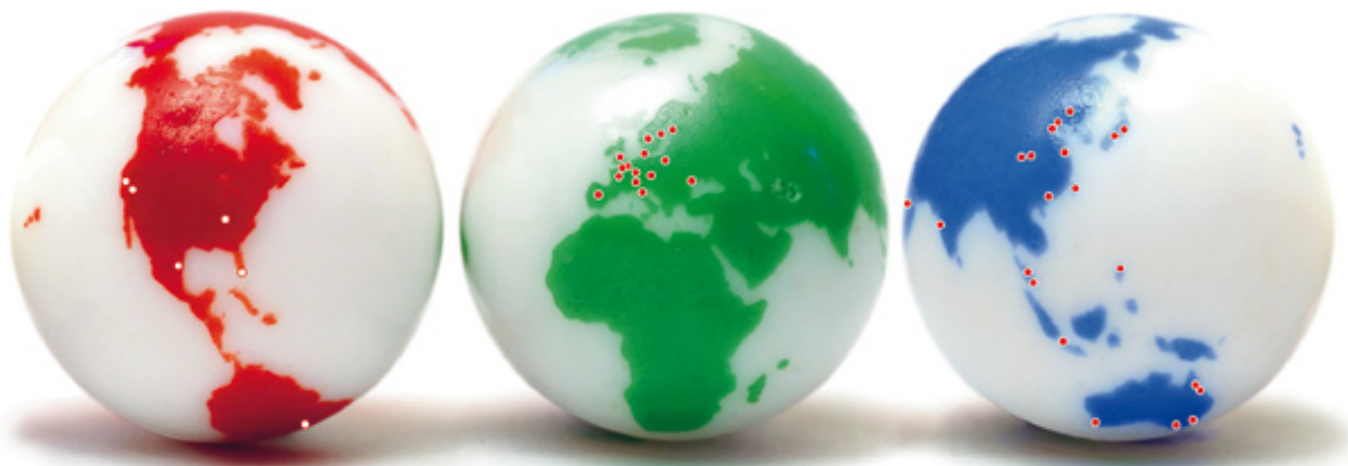
The above Terms of Business effective from 29th June 2007

For latest prices and delivery to your door visit MyTub Ltd - 0844 556 1818 - www.mytub.co.uk - info@mytub.co.uk 

GF Piping Systems > worldwide at home

Our sales companies and representatives
ensure local customer support in over 100 countries.

www.georgfischer.co.uk



The technical data is not binding. They neither constitute expressly warranted characteristics nor guaranteed properties nor a guaranteed durability. They are subject to modification. Our General Terms of Sale apply.

Adding Quality to People's Lives

Australia

George Fischer Pty Ltd
Riverwood NSW 2210 Australia
Phone +61(0)2/95 02 8000
australia.ps@georgfischer.com
www.georgfischer.com.au

Austria

Georg Fischer
Rohrleitungssysteme GmbH
3130 Herzogenburg
Phone +43(0)2782/856 43-0
austria.ps@georgfischer.com
www.georgfischer.at

Belgium/Luxembourg

George Fischer NV/SA
1070 Bruxelles/Brüssel
Phone +32(0)2/556 40 20
be.ps@georgfischer.com
www.georgfischer.be

Brazil

George Fischer Ltda
04795-100 S o Paulo
Phone +55(0)11/5687 1311
br.ps@georgfischer.com

China

George Fischer Piping Systems Ltd
Shanghai
Pudong, Shanghai 201319
Phone +86(0)21/58 13 33 33
china.ps@georgfischer.com
www.cn.piping.georgfischer.com

Denmark/Iceland

George Fischer A/S
2630 Taastrup
Phone +45 (0)70 22 19 75
info.dk.ps@georgfischer.com
www.georgfischer.dk

France

George Fischer SAS
95931 Roissy C harles de Gaulle
Cedex
Phone +33(0)1 41 8468 84
fr.ps@georgfischer.com
www.georgfischer.fr

Germany

George Fischer GmbH
73095 Albershausen
Phone +49(0)7161/302-0
info.de.ps@georgfischer.com
www.vgd.georgfischer.de

India

George Fischer Piping
Systems Ltd
400 093 Mumbai
Phone +91 224007 2001
in.ps@georgfischer.com
www.georgfischer.in

Italy

George Fischer S.p.A.
20063 Cernusco S/N (MI)
Phone +3902/921 861
it.ps@georgfischer.com
www.georgfischer.it

Japan

George Fischer Ltd
556-0011 Osaka,
Phone +81(0)6/6635 2691
jp.ps@georgfischer.com
www.georgfischer.jp

Korea

George Fischer Piping Systems
Guro-3 dong, Guro-gu, Seoul,
Korea
Phone +82(0)2 2081 1450
Fax +82(0)2 2081 1453
kor.ps@georgfischer.com

Malaysia

Georg Fischer (M) Sdn. Bhd.
40460 Shah Alam, Selangor
Phone +60 (0)3-5122 5585
conne.kong@georgfischer.com

Mexico

Georg Fischer S.A. de C.V.
Apodaca, Nuevo Leon
CP66636 Mexico
Phone +52 (81)1340 8586
Fax +52 (81)1522 8906

Mexico

Georg Fischer S.A. de C.V.
Apodaca, Nuevo Leon
CP66636 Mexico
Phone +52 (81)1340 8586
Fax +52 (81)1522 8906

Middle East

Georg Fischer Piping Systems
Dubai, United Arab Emirates
Phone +971 4 289 41 20
gfdubai@emirates.net.ae
www.piping.georgfischer.com

Netherlands

George Fischer N.V.
8161 PA Epe
Phone +31 (0)578-678 222
nL.ps@georgfischer.com
www.georgfischer.nl

Norway

George Fischer AS
1351 Rud
Phone +47(0)67 18 29 00
no.ps@georgfischer.com
www.georgfischer.no

Poland

Georg Fischer Sp. z o.o.
02-226 Warszawa
Phone +48(0)22/313 10 50
poland.ps@georgfischer.com
www.georgfischer.pl

Romania

Georg Fischer Piping
Systems Ltd
020257 Bucharest - Sector 2
Phone +40(0)1/230 53 80
ro.ps@georgfischer.com

Russia

Georg Fischer Piping Systems
Moscow 125047
Phone +7 495 258 60 80
ru.ps@georgfischer.com

Singapore

George Fischer Pte Ltd
528 872 Singapore
Phone +65(0)67 47 06 11
sgp.ps@georgfischer.com
www.georgfischer.com.sg

Spain/Portugal

George Fischer S.A.
28046 Madrid
Phone +34(0)91/781 98 90
es.ps@georgfischer.com
www.georgfischer.es

Sweden/Finland

George Fischer AB
12523 Älvsjö-Stockholm
Phone +46(0)8 506 775 00
info.se.ps@georgfischer.com
www.georgfischer.se

Switzerland

Georg Fischer Rohrleitungssysteme
(Schweiz) AG
8201 Schaffhausen
Phone +41(0)52 631 30 26
ch.ps@georgfischer.com
www.piping.georgfischer.ch

Taiwan

Georg Fischer Piping Systems
San Chung City, Taipei Hsien
Phone +886 2 8512 2822 Ext. 15
Fax +886 2 8512 2823

United Kingdom/Ireland

George Fischer Sales Limited
Coventry, CV2 2ST
Phone +44(0)2476 535 535
uk.ps@georgfischer.com
www.georgfischer.co.uk

USA/Canada/Latin America/Caribbean

George Fischer LLC
Tustin, CA 92780-7258
Phone +1(714) 731 88 00
Toll Free 800/854 40 90
us.ps@georgfischer.com
www.us.piping.georgfischer.com

Export

Georg Fischer Piping Systems (Switzerland) Ltd
8201 Schaffhausen
Phone +41(0)52 631 30 26
Fax +41(0)52 631 28 93
export.ps@georgfischer.com
www.piping.georgfischer.com

LITGF0717 (08.08)
© George Fischer Piping Sales Ltd.

+GF+

GEORG FISCHER PIPING SYSTEMS

For latest prices and delivery to your door visit MyTub Ltd - 0844 556 1818 - www.mytub.co.uk - info@mytub.co.uk