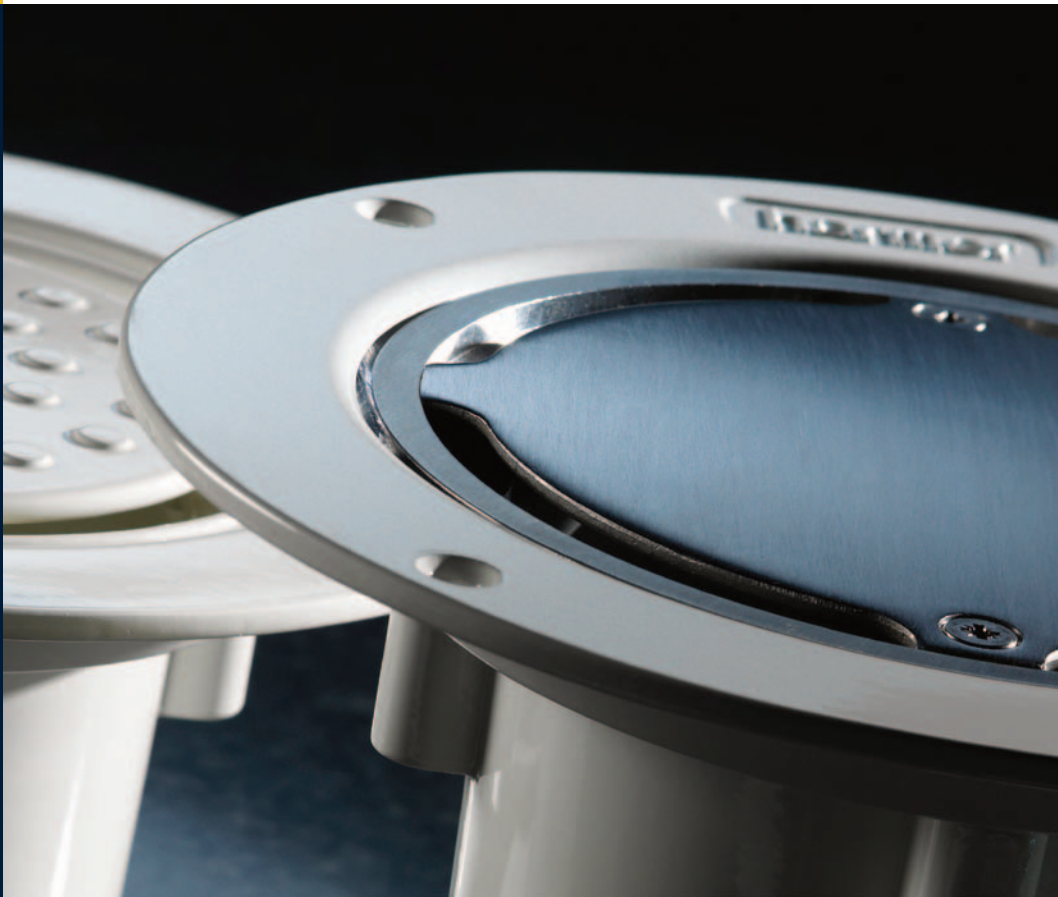


Uniclass	L731
CI/SfB	(52) x

Alumasc

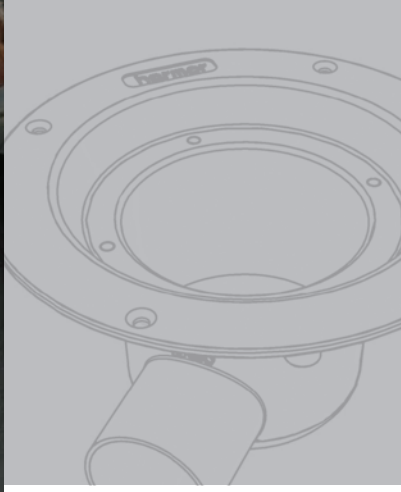
Harmer Shower Drains

Design and Performance in premium drainage systems



Harmer Aluminium and ABS Shower Drains

The ultimate shower drain with a choice of design styles and finishes



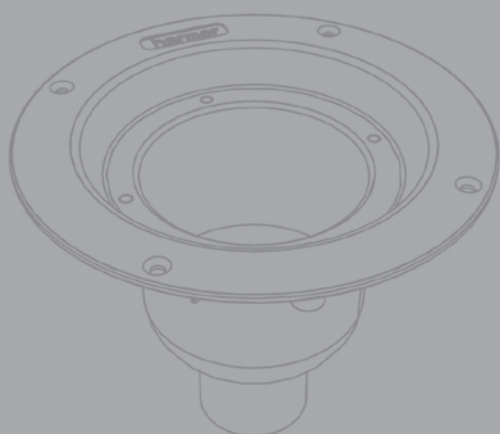
From the original Harmer Shower Drain comes a new generation of super compact gullies designed for today's fast moving lifestyle. Attention to detail takes design to a new level of excellence offering unlimited choice to optimise space and performance within the wet environment.

Extensive market research and understanding the changing demands of a growing market has resulted in two unique Harmer Shower Drain offers manufactured in either premium metals or ABS compound containing antimicrobial agents.



Harmer Aluminium and ABS Shower Drains

A new range of engineered products designed for modern bathroom and wetroom drainage



Designed to perform, Engineered to last

- Super compact size
- Over 50 variants for tiled or vinyl floor finishes
- Antimicrobial versions
- Security fixings
- Waterways are free running, designed for self-cleaning
- High flow of up to 1.3 l/s
- Removable trap and top access roddable
- Connection to 43mm, 56mm and 110mm pipework



Designed for modern living

Domestic Use

Efficient, high flow drainage in a wetroom environment with a choice of grate styles and finishes.

Commercial Use

For schools, hotels, leisure facilities and MOD applications where value for money, durability and low maintenance are important.

Secure Accommodation Use

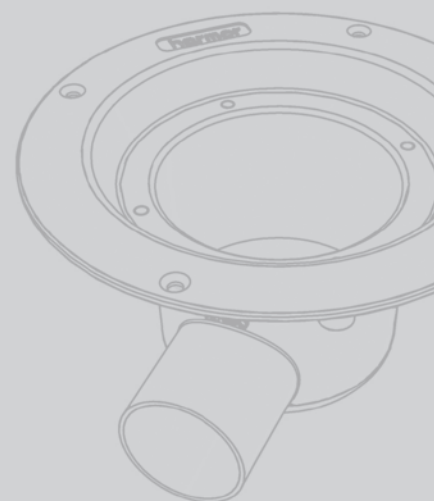
For prisons and secure units, drains are available with security fixings.

Healthcare Use

The Harmer range includes antimicrobial shower drains, low on cost but high on performance, to satisfy cleanliness and hygiene regimes in the NHS, nursing and residential care sectors.

Local Authority and Housing Association Use

With the Lifetime Homes Standard allowing bathroom conversions in barrier free shower areas, Harmer Shower Drains suit either ground or suspended floors.



The Harmer Shower Aluminium Range

Precision engineered with lifetime performance



Stainless steel star grate and plain cap shown.



The Harmer Aluminium Shower Drain range establishes the highest possible performance standards for versatility, choice and durability offering architects, specifiers and consultants exceptional benefits.

Compliances

Harmer Shower Drains fully meet the requirements of BS EN 1253 for general design, flow performance and load testing.

High Flow Performance

In independent tests, flow performances of up to 1.3 litres per second (80 litres per minute) have been recorded.

Robust and Secure

The drain bodies and fittings are lightweight, durable and strong and when tested in accordance with BS EN 1253, the load class designation is K3, meaning that the drain can withstand a 300 kg vertical load. Security fixings are also available to prevent unauthorised removal of caps and grates.

Choice of Caps and Grates



Pebble
White only



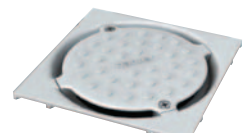
Plain
Chrome
Also SS and NB



Star
Stainless Steel
Also NB



Concentric Ring
Nickel Bronze
Also SS



Pebble & Tile
White only

Easy and Quick to Install

The shallow depth horizontal body, in particular, fits neatly into joisted floor voids and screeded floors. The drain bodies easily connect to other materials and are fully compatible with UK pipe sizes, where 43mm (1½”), 56mm (2”) and 110mm (4”) connections are required.

Value for Money

The Drain bodies are manufactured from LM6 aluminium alloy which has excellent resistance to corrosion. Drain bodies are further protected by a BBA-approved polyester powder coating.

Sustainable

Aluminium is recyclable and end of life Harmer Shower Drains can be melted down to make new aluminium products. The process is a continuous cycle making aluminium a cost effective and sustainable material.



A Choice of Caps and Grates

The range of top accessible caps and grates is available in a choice of aluminium, chrome, stainless steel and nickel bronze to co-ordinate and harmonise with the wetroom environment.

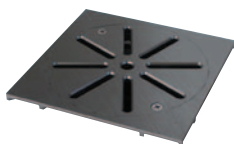
Low Maintenance and Hygienic

The design of the cap and foul air trap optimise flow through the waterways to reduce hair entrapment and dirt collection, helping to maintain high flow and minimize maintenance.

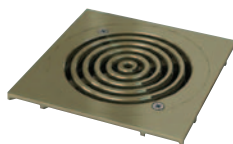
- 1 Pebble Cap (White)
- 2 Concentric Ring Grate (NB)
- 3 Star Grate (SS)
- 4 Tile Frame (White)
- 5 Clamp (White)
- 6 Foul Air Trap
- 7 Vertical Drain Body
Horizontal Drain Body



Plain & Tile
Chrome
Also SS and NB



Star & Tile
Stainless Steel
Also NB



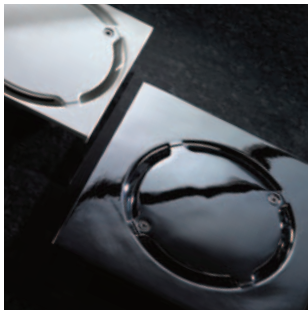
Concentric & Tile
Nickel Bronze
Also SS

The Harmer Shower ABS Range

Innovative design providing supreme performance and styling



White quadrant and pebble cap shown.



Harmer ABS Shower Drains combine high performance drainage and value engineering to establish class leading standards in drainage design.

Compliances

Fully compliant with BS EN 1253 for general design, flow performance and load testing.

High Flow Performance

Designed for high flow drainage with flow rates of up to 1.3 litres per second (80 litres per minute).

Robust and Secure

Manufactured in ABS plastic compound for corrosion resistance with under ribbed flange for extra strength.

A Choice of Caps and Grates

Attractive chrome and ABS caps and grates are available in practical plain, quadrant or pebble finishes for tiled or sheet vinyl floor coverings.

Hygienic and Low Maintenance

Antimicrobial ABS compound enhances hygiene and control of bacteria. Efficient design ensures self cleansing flow. Top accessible with a removable trap for access and cleansing.

Choice of Caps and Grates



Quadrant
White only



Pebble
White only



Plain
Chrome



Quadrant & Tile
White only



Pebble & Tile
White only



Plain & Tile
Chrome



Easy and Quick to Install

Vertical and horizontal Harmer Shower Drains install into most floors and connect to 43mm and 56mm pipework. The vertical body fits into 110mm ring seal pipe sockets.

Value for Money

The use of plastics keeps material cost low while efficiency of design ensures premium performance.

Sustainable

ABS plastic is non toxic and 100% recyclable.

- 1 Quadrant Cap (White)
- 2 Pebble Cap (White)
- 3 Plain Cap (Chrome)
- 4 Tile Frame (White)
- 5 Clamp (White)
- 6 Foul Air Trap
- 7 Vertical Drain Body
Horizontal Drain Body



The Linearis Range complements the Harmer Shower Range in performance and style



The Harmer Linearis range caters for all the requirements of modern living, with Linearis drainage solutions blending beautifully with any bathroom design to create the perfect environment.

Harmer Linearis removes the need for a conventional shower tray and offers a choice of innovative slimline drainage channels with contemporary styling.

Available in a choice of widths and lengths, Harmer Linearis Slimline high performance channels deliver fast and efficient drainage. Additionally both Slimline channels feature lockable covers and have easy access for maintenance. The wider Slimline 60 has all the features of the Slimline 40, but with an increased capacity of up to 1.2 litres per second it is able to tackle the high volume shower heads currently being installed in luxury bathrooms and fitness centres.

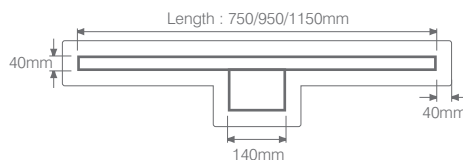
The Slimline 60 channel cover can be reversed to allow for tiling, allowing the drain to be co-ordinated to match the bathroom tiling. It can also be adjusted to accommodate tiles up to thicknesses of 20mm, such as natural stone and granite.

For more product and technical information visit www.alumascdrainage.co.uk/linearis or telephone: +44(0)1744 648400

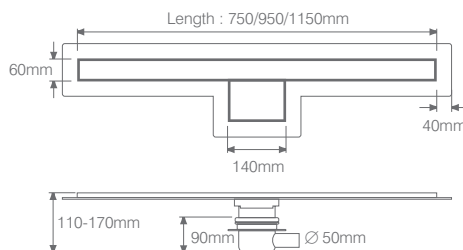


To request a Linearis brochure please contact our literature hotline on: +44(0)808 100 2008

Linearis Slimline 40




Linearis Slimline 60





Showering product featured: Rada Sense Dual Shower, visit www.radacontrols.com for more information.

For latest prices and delivery to your door visit MyTub Ltd - 0845 303 8383 - www.mytub.co.uk - info@mytub.co.uk 

- Rainwater
- Drainage
- Waterproofing
- Metal Roofing
- Façades

Technical Support
+44 (0)1744 648400

Literature Hotline
+44 (0)808 100 2008

ALUMASC EXTERIOR BUILDING PRODUCTS LTD
White House Works, Bold Road, Sutton,
St Helens, Merseyside, WA9 4JG
United Kingdom
Telephone: +44 (0)1744 648400
Facsimile: +44 (0)1744 648401
Website: www.alumascdrainage.co.uk
E-mail: info@alumasc-exteriors.co.uk

Intellectual Property

The Harmer Shower Drain range is the result of a high level of creativity applied to 'step change' and 'innovation' where the application of design and technology has been forefront in the creation of these new products. This investment is further reflected in filings for nine new Community Design Registrations and Patent Application GB 0919887.0



Printed on 80%
recycled paper stock

All reasonable care has been taken in the preparation of this brochure, all information, recommendations and guidance notes on the use of The Products are made without guarantee since the conditions of use are beyond the control of Alumasc Exterior Building Products Limited (The Company). The customer is responsible for ensuring that each product is fit for its intended purpose and that conditions for use are suitable.

The information contained in this brochure and advice arising therefrom is free of charge and accordingly on the terms that no liability nor liability for negligence will attach to the Company or its servants in relation to any such service arising out of or in connection with this brochure.

The Company pursues a policy of constant product development and information contained in this publication is therefore subject to change without notice.

