

**Instruction manual**

**CONTAIN-IT PLUS  
PFA / PE100**

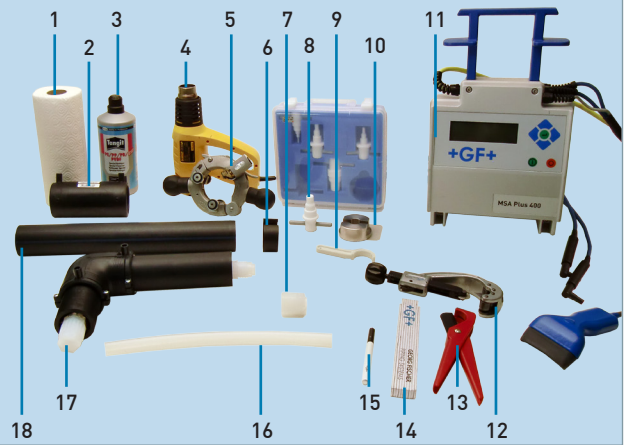
**PFA  
Flare connection**



**+GF+**

**GEORG FISCHER**  
PIPING SYSTEMS

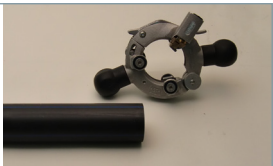
- 1 Cleaning cloth
- 2 Electro fusion coupler
- 3 KS Tangit Cleaner
- 4 Heat gun
- 5 Rotary peeler RS
- 6 Snap ring
- 7 PFA Fitting nut
- 8 Insert pin
- 9 Dedicated nut spanner
- 10 Insert pin jig
- 11 MSA Electrofusion Unit with Traceability (e.g. MAS Plus 400)
- 12 PPC Plastic pipe cutter
- 13 Plastic pipe cutter
- 14 Meter
- 15 Marking Pen
- 16 PFA tubing
- 17 CONTAIN-IT Plus Fitting
- 18 PE 100 Pipe



**1**  
Cut the tubing and the outer pipe on the needed length, in a right angle.



**2**  
Peel the welding zone of the outer pipe (rotary peeler).



**3**  
Clean the welding zone with the Tangit Plastic Cleaner for PE.



**4**  
Remove the bedstops in the electro fusion coupler.



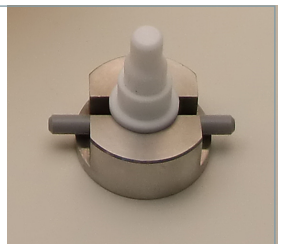
**5**  
Mark the position on the electro fusion coupler, on the fitting and the pipe end.



**6**  
Place the complete electro fusion coupler on the long end of the fitting on the pipe end.



**7**  
Position the insert pin (1/2"»size 13 a. 3/4"» size19) in the insert pin jig.



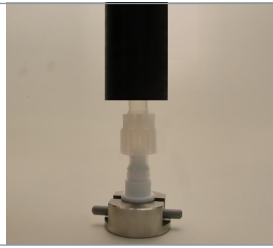
**8**  
Heat up the end of the tubing for 15 to 20 seconds with the heat gun at about 400°C (heated area must be as long as the insert pin base).



**NOTICE**  
Be careful not burn yourself » do not touch the heated area on tubing and heat gun!

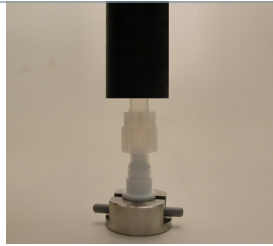
9

After heating up the end of the tubing, immediately slide it over the insert pin up to the base of the insert, thereby expanding the tubing into a flare shape.



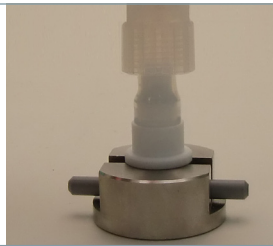
10

The tubing must be held for about one minute while it sets in a flared shape (cooling time can be reduced by blowing cooling air on the tube). After cooling for the required time, remove the tubing from the insert pin (cooling time can also be reduced immersing tubing and insert pin in deionized water or similar!).



11

Do visual check that the tubing has been expanded into a flared shape.



12

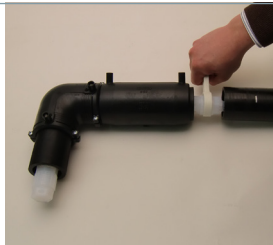
After flaring is complete, promptly attach the CONTAIN-IT Plus fitting to the expanded tubing.



13

Fasten the fitting nut to body and tighten to the end surface, using the dedicated nut spanner.

As a guide, tighten the nut by a further 1/8 turn in order, to make sure the nut is screwed far enough to make contact with the body end surface; further we refer to the follow tightening torques:



Body size	CONTAIN-IT Plus dim.	Torque (N x m)
4	1/2" / 50mm	5.0 to 5.3
5	3/4" / 63mm	10.0 to 10.5

14

Pressure test of the tubing line.



15

Place the snap ring in the gap between CONTAIN-IT Plus fitting and outer pipe.



16

Place the electro fusion coupler at the right position (marked in step 5).



17

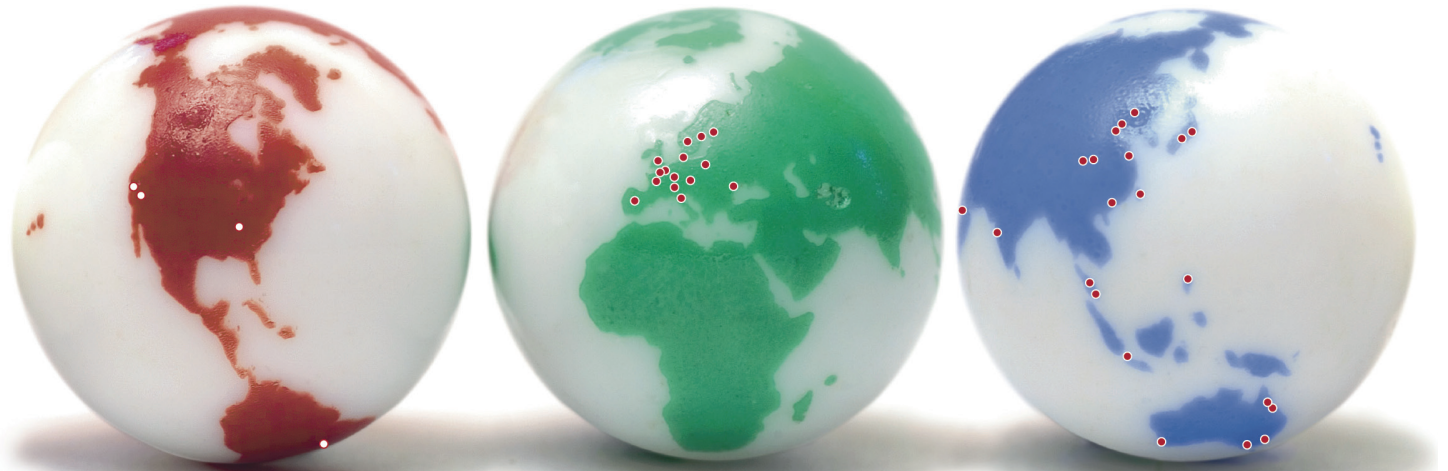
Do the electro fusion welding (MSA).



# GF Piping Systems → worldwide at home

Our sales companies and representatives ensure local customer support in over 100 countries.

[www.piping.georgfischer.com](http://www.piping.georgfischer.com)



The technical data is not binding. They neither constitute expressly warranted characteristics nor guaranteed properties nor a guaranteed durability. They are subject to modification. Our General Terms of Sale apply.

## Adding Quality to People's Lives

### Australia

George Fischer Pty Ltd  
Riverwood NSW 2210 Australia  
Phone +61(0)2/9502 8000  
[australia.ps@georgfischer.com](mailto:australia.ps@georgfischer.com)  
[www.georgfischer.com.au](http://www.georgfischer.com.au)

### Austria

Georg Fischer  
Rohrleitungssysteme GmbH  
3130 Herzogenburg  
Phone +43(0)2/782/856 43-0  
[austria.ps@georgfischer.com](mailto:austria.ps@georgfischer.com)  
[www.georgfischer.at](http://www.georgfischer.at)

### Belgium/Luxembourg

Georg Fischer NV/SA  
1070 Bruxelles/Brüssel  
Phone +32(0)2/556 40 20  
[be.ps@georgfischer.com](mailto:be.ps@georgfischer.com)  
[www.georgfischer.be](http://www.georgfischer.be)

### Brazil

George Fischer Ltda  
04795-100 São Paulo  
Phone +55(0)11/5687 1311  
[br.ps@georgfischer.com](mailto:br.ps@georgfischer.com)

### China

Georg Fischer  
Piping Systems Ltd Shanghai  
Pudong, Shanghai 201319  
Phone +86(0)21/58 13 33 33  
[china.ps@georgfischer.com](mailto:china.ps@georgfischer.com)  
[www.cn.piping.georgfischer.com](http://www.cn.piping.georgfischer.com)

### Denmark/Iceland

Georg Fischer A/S  
2630 Taastrup  
Phone +45 (0)70 22 19 75  
[info.dk.ps@georgfischer.com](mailto:info.dk.ps@georgfischer.com)  
[www.georgfischer.dk](http://www.georgfischer.dk)

### France

Georg Fischer SAS  
95932 Roissy Charles de Gaulle Cedex  
Phone +33(0)1 41 84 68 84  
[fr.ps@georgfischer.com](mailto:fr.ps@georgfischer.com)  
[www.georgfischer.fr](http://www.georgfischer.fr)

### Germany

Georg Fischer GmbH  
73095 Albershausen  
Phone +49(0)7161/302-0  
[info.de.ps@georgfischer.com](mailto:info.de.ps@georgfischer.com)  
[www.georgfischer.de](http://www.georgfischer.de)

### India

Georg Fischer Piping Systems Ltd  
400 076 Mumbai  
Phone +91 224007 2001  
[in.ps@georgfischer.com](mailto:in.ps@georgfischer.com)  
[www.georgfischer.in](http://www.georgfischer.in)

### Italy

Georg Fischer S.p.A.  
20063 Cernusco S/N (MI)  
Phone +3902/921 861  
[it.ps@georgfischer.com](mailto:it.ps@georgfischer.com)  
[www.georgfischer.it](http://www.georgfischer.it)

### Japan

Georg Fischer Ltd  
556-0011 Osaka,  
Phone +81(0)6/6635 2691  
[jp.ps@georgfischer.com](mailto:jp.ps@georgfischer.com)  
[www.georgfischer.jp](http://www.georgfischer.jp)

### Korea

Georg Fischer Piping Systems  
Guro-3 dong, Guro-gu, Seoul, Korea  
Phone +82(0)2 2081 1450  
Fax +82(0)2 2081 1453  
[kor.ps@georgfischer.com](mailto:kor.ps@georgfischer.com)

### Malaysia

Georg Fischer (M) Sdn. Bhd.  
40460 Shah Alam, Selangor  
Phone +60 (0)3-5122 5585  
[conne.kong@georgfischer.com](mailto:conne.kong@georgfischer.com)

### Mexico

Georg Fischer S.A. de C.V.  
Apodaca, Nuevo Leon  
CP66636 Mexico  
Phone +52 (81)1340 8586  
Fax +52 (81)1522 8906

### Middle East

Georg Fischer Piping Systems  
Dubai, United Arab Emirates  
Phone +971 4 289 41 20  
[gfdubai@emirates.net.ae](mailto:gfdubai@emirates.net.ae)  
[www.piping.georgfischer.com](http://www.piping.georgfischer.com)

### Netherlands

Georg Fischer N.V.  
8161 PA Epe  
Phone +31(0)578/678 222  
[nL.ps@georgfischer.com](mailto:nL.ps@georgfischer.com)  
[www.georgfischer.nl](http://www.georgfischer.nl)

### Norway

Georg Fischer AS  
1351 Rud  
Phone +47(0)67 18 29 00  
[no.ps@georgfischer.com](mailto:no.ps@georgfischer.com)  
[www.georgfischer.no](http://www.georgfischer.no)

### Poland

Georg Fischer Sp. z o.o.  
02-226 Warszawa  
Phone +48(0)22/313 10 50  
[poland.ps@georgfischer.com](mailto:poland.ps@georgfischer.com)  
[www.georgfischer.pl](http://www.georgfischer.pl)

### Romania

Georg Fischer  
Piping Systems Ltd  
020257 Bucharest - Sector 2  
Phone +40(0)21/230 53 80  
[ro.ps@georgfischer.com](mailto:ro.ps@georgfischer.com)

### Russia

Georg Fischer Piping Systems  
Moscow 125047  
Tel. +7 495 258 60 80  
[ru.ps@georgfischer.com](mailto:ru.ps@georgfischer.com)

### Singapore

George Fischer Pte Ltd  
528 872 Singapore  
Phone +65(0)67 47 06 11  
[sgp.ps@georgfischer.com](mailto:sgp.ps@georgfischer.com)  
[www.georgfischer.com.sg](http://www.georgfischer.com.sg)

### Spain/Portugal

Georg Fischer S.A.  
28046 Madrid  
Phone +34(0)91/781 98 90  
[es.ps@georgfischer.com](mailto:es.ps@georgfischer.com)  
[www.georgfischer.es](http://www.georgfischer.es)

### Sweden/Finland

Georg Fischer AB  
12523 Älvsjö-Stockholm  
Phone +46(0)8/506 775 00  
[info.se.ps@georgfischer.com](mailto:info.se.ps@georgfischer.com)  
[www.georgfischer.se](http://www.georgfischer.se)

### Switzerland

Georg Fischer  
Rohrleitungssysteme [Schweiz] AG  
8201 Schaffhausen  
Phone +41(0)52 631 30 26  
[ch.ps@georgfischer.com](mailto:ch.ps@georgfischer.com)  
[www.piping.georgfischer.ch](http://www.piping.georgfischer.ch)

### Taiwan

Georg Fischer Piping Systems  
San Chung City, Taipei Hsien  
Phone +886 2 8512 2822 Ext. 15  
Fax +886 2 8512 2823

### United Kingdom/Ireland

George Fischer Sales Limited  
Coventry, CV2 2ST  
Phone +44(0)2476 535 535  
[uk.ps@georgfischer.com](mailto:uk.ps@georgfischer.com)  
[www.georgfischer.co.uk](http://www.georgfischer.co.uk)

### USA/Canada/Latin America/Caribbean

Georg Fischer LLC  
Tustin, CA 92780-7258  
Phone +1(714) 731 88 00  
Toll Free 800/854 40 90  
[us.ps@georgfischer.com](mailto:us.ps@georgfischer.com)  
[www.us.piping.georgfischer.com](http://www.us.piping.georgfischer.com)

### Export

Georg Fischer  
Piping Systems (Switzerland) Ltd.  
8201 Schaffhausen  
Phone +41(0)52-631 30 26  
Fax +41(0)52-631 28 93  
[export.ps@georgfischer.com](mailto:export.ps@georgfischer.com)  
[www.piping.georgfischer.ch](http://www.piping.georgfischer.ch)