

price list february 2011



General information

Office hours:

Monday to Friday 8.30am - 5.00pm.

Prices:

Prices are exclusive of VAT, and are subject to change without notice.

All prices displayed are recognised as list.

Terms:

A copy of altecnic's terms and conditions is available on request.

Property of goods:

Until full payment has been received, all goods supplied remain the property of altecnic ltd.

Delivery:

Carriage paid 3 day service, UK mainland only. (minimum order value of £100 applies or £7.50 small order charge applies)

customer care notice

In-warranty claims and authorised good stock returns.

- collected and processed within 28 days of written notification.
- warranty is 12 months from date of installation / 18 months from date of manufacture (date of manufacture stamped onto the product) and is limited to replacement (product) value only.
- please note. rehandling charges are applicable on good stock returns.

useful contacts

Accounts enquiries: 01785 218203

Customer care line: 01785 218207

Merchant sales: 01785 218200
sales@altecnic.co.uk

Important notes

1. The standard rehandling charge is 20% of the nett value of the product authorised for good stock return.
2. Goods returned to altecnic without authorisation or correct paperwork, may not be accepted for processing.
3. Warranty claims are subject to proof that the product has been correctly installed, in accordance with the installation instructions and good working practice.
4. Warranty claims exceeding £50 can only be authorised by the altecnic customer care department.
5. As part of our quality procedure, we validate a warranty claim by product test procedures.
6. All short shipments to be advised within 7 days of receipt.
7. All returns must be packaged securely; otherwise they may not be processed for credit.

THE
**CARBON
NEUTRAL**
COMPANY

As a company, altecnic has a strong corporate environmental awareness, and we decided to investigate ways in which we could neutralise our own carbon footprint. To achieve this, we called in the expertise of climate consulting business The CarbonNeutral® company working in partnership with the Edinburgh Centre for Carbon Management, who assess carbon outputs and advise on ways of minimising the use of resources.

The process of becoming a CarbonNeutral® company was broken down into 3 phases. The initial phase was to evaluate and measure the organisation's original footprint, the second to put in place reduction plans to minimise our footprint where possible. For our business, this meant ensuring that some of our own water and energy-saving products were used at our facility in Stafford, as well as implementing some simple energy-saving tactics, such as utilising low-energy lighting, lowering the heating temperature and installing timers on electronic devices to switch them off when not required.

It is impossible for any conventional business to be completely carbon neutral. We must all use energy, so the third phase is to offset our reduced carbon footprint. Working with the CarbonNeutral® team, we were able to offset the remainder of our carbon footprint by investing in 'carbon offset' projects. These can range from Hydro Electric schemes, to tree planting. In our case, our contribution has included investment in a New Zealand wind farm, an energy-saving light bulb project in Jamaica and reforestation in Wales.

We are the first in our industry to become CarbonNeutral®. On a global scale, the offset projects are obviously going to make a contribution, but what has been most important to us is the change in our 'consumer' nature, taking extra care with our own energy and resource use. There has been a noticeable reduction in our energy costs, and we believe that the regime we have adopted in the work place has also unconsciously carried over into the homes of some of our workforce.

We will continue to work to minimise our environmental impact even further with the appropriate technology and techniques and we will also continue to develop our product range to include the very best in energy and water-saving technology, and use these qualities in promoting those products.



Your kind of product range, at the right kind of price

We recognise that when you're on site, or fulfilling a contract, you need to have the right components to hand - and they've got to be reliable.

That's what makes us fight hard to uphold our unequalled range, our unbeatable manufacturing / design standards - and an ISO 9002 certified service that means we can look you in the eye.

With Building Regulations and construction standards putting increasing emphasis on environmental responsibility, water and energy conservation come naturally to Altecnic - we're the market's only Carbon Neutral company, and many of our products save water, meeting the latest standards.

So we'll continue what we started 10 years ago - meeting our customers' current needs, while investing in the development of the products you'll need in the future.

Contents

thermostatic radiator valves & twin packs	4
sealed system heating equipment	8
pressurisation units	10
potable water systems & expansion vessels	11
air venting and removal	15
safety relief valves	18
pump controls & accessories	20
thermostats	22
thermostatic mixing valves	23
pressure reducing valves	26
backflow preventors	28
lever ball valves	29
flow regulation	32
gas lever ball valves & Y pattern strainers	34
accessories	36
water meters	38

thermostatic radiator valves & twin packs



ecocal thermostatic radiator valves

Ref. no	Description	Box quantity	Price
CA-200428MS	ecocal 8mm angled TRV	50	£21.01
200420 LTC	ecocal 10mm angled TRV	50	£18.62
200425 LTC	ecocal 15mm angled TRV	50	£18.62
CA-200455	ecocal 15mm angled with high chrome head	50	£38.72
CA-201010	ecocal 10mm straight TRV	20	£25.94
200465 LTC	ecocal 15mm straight TRV	20	£23.12
CA-201013	ecocal 10mm straight with high chrome head	50	£44.66
CA-201011	ecocal 15mm straight with high chrome head	50	£44.66

ecocal twin packs

Ref. no	Description	Box quantity	Price
200440 LTC	ecocal 10mm angled twin pack	20	£27.56
200445 LTC	ecocal 15mm angled twin pack	20	£27.56
200405 LTC	ecocal 15mm angled twin pack push fit	20	£33.59
CA-200456	ecocal 10mm angled twin pack chrome head	20	£44.92
200455 LTC	ecocal 15mm angled twin pack chrome head	20	£44.92
CA-200478	ecocal 10mm straight twin pack	20	£35.48
200475 LTC	ecocal 15mm straight twin pack	20	£34.91
CA-200477	ecocal 10mm straight chrome head twin pack	20	£48.05
200485 LTC	ecocal 15mm straight chrome head twin pack	20	£48.05
CA-200510	ecocal complete with angled 10mm pushfit elbows	20	£41.72

polished radiator valves

Ref. no	Description	Price
YU-JQAL023LC	15mm x 1/2" angled minimalistic (single peg) pair	£22.81
YU-JQAL027LC	15mm x 1/2" angled minimalistic (cross head) pair	£27.60
YU-JQAL025LC	15mm x 1/2" angled modern pair	£23.53
YU-JQAL028LC	15mm x 1/2" angled traditional (cross head) pair	£25.13
YU-JQAL022LC	15mm x 1/2" straight minimalistic (single peg) pair	£22.81
YU-JQAL026LC	15mm x 1/2" straight minimalistic (cross head) pair	£27.60
YU-JQAL024LC	15mm x 1/2" straight modern pair	£23.53



push fit ecocal and radiator valves

Ref. no	Description	Box quantity	Price
459004	10mm pushfit elbow (pair)	25	£9.63



ecocal thermostatic heads

Ref. no	Description	Box quantity	Price
200001	ecocal head only	10	£16.76
CA-200000	ecocal standard head and collar	10	£16.28
200014 CST	ecocal high chrome head	50	£20.69
201000	ecocal 2m remote sensor head	10	£44.84
656102	220v thermoelectric actuator	10	£65.51
656104	24v thermoelectric actuator	10	£62.39
472000	remote adjusting and sensing for TRV 2m capillary	1	£188.29
CA-100793	tamperproof guard and allen key for tamperproof guard	1	£14.56



thermostatic radiator valves & twin packs



ecocal options

Ref. no	Description	Box quantity	Price
220402	1/2" angled body - 1/2" female iron (not reversible)	20	£13.68
220500	3/4" angled body - 3/4" female iron (not reversible)	20	£20.82
221402	1/2" straight body - 1/2" female iron (not reversible)	20	£15.55
221500	3/4" straight body - 3/4" female iron (not reversible)	20	£21.45
224402	1/2" angled body (horizontal sensor) (not reversible)	20	£17.54
21029 LTC	15mm x 10mm reducing bullet	20	£1.66
21051 LTC	15mm x 8mm reducing bullet	20	£1.66
226400	radiator valve – double elbow	50	£10.65

Please note: when ordering an ecocal TRV to iron, quote both thermostatic head code and valve body codes separately.

radiator valves - series 400 (not reversible)

Ref. no	Description	Box quantity	Price
431503	3/4" lockshield angled radiator valve	20	£23.00
431402	1/2" lockshield angled radiator valve	20	£9.88
401500	3/4" wheelhead angled radiator valve	20	£28.42
411402	1/2" wheelhead angled standard radiator valve	20	£13.04
432503	3/4" lockshield straight radiator valve	20	£23.90
432402	1/2" lockshield straight radiator valve	20	£11.34
402500	3/4" wheelhead straight radiator valve	20	£32.81
412402	1/2" wheelhead straight radiator valve	20	£13.04

ecocal and eclipse radiator drain off tail piece

Ref. no	Description	Box quantities	Price
YU-JQAL213HC	radiator drain off tail piece	10	£5.86

eclipse manual radiator valves

Ref. no	Description	Box quantity	Price
CA-410408	8mm angled eclipse valve with WH and LS cap	10	£11.18
410410 LTC	10mm angled eclipse valve with WH and LS cap	10	£8.55
410415 LTC	15mm angled eclipse valve with WH and LS cap*	10	£8.55
CA-410425	15mm angled eclipse pair with high chrome heads	10	£24.06
CA-406408	8mm straight eclipse valve with WH and LS cap	10	£13.06
CA-406410	10mm straight eclipse valve with WH and LS cap	10	£12.88
406415 LTC	15mm straight eclipse valve with WH and LS cap	10	£12.85
CA-406425	15mm straight eclipse pair with high chrome heads	10	£31.10

- 10 bar, BS 2767:10, serviceable packing gland
- Designed to match all the demands of modern sealed systems as well as traditional open vented systems
- Lockshield cap purpose designed to match ecocal
- Maximum operating pressure of 10 bar
- Polished chrome finish (where appropriate)

* Suitable for all valves



ecopas differential bypass valve

Ref. no	Description	Box quantity	Price
519002 GLW	22mm compression (BG approved version)	10	£44.82
519500	¾" full flow differential valve	10	£55.83
519700	1¼" full flow differential valve	10	£150.99

- Valves for use on heating systems where control is by zone or thermostatic radiator valves
- Fitted between flow and return permitting circulation through boiler and helps prevent unnecessary cycling of boiler



sealed system heating equipment



robokit extra

Ref. no	Size	Description	Price
CA-900004	4	4 ltr vessel and kit (wall mounted)	£105.49
CA-900008	8	8 ltr vessel and kit (wall mounted)	£107.30
CA-900012	12	12 ltr vessel and kit (wall mounted)	£111.86
CA-900018	18	18 ltr vessel and kit (wall mounted)	£119.58
CA-900024	24	24 ltr vessel and kit (wall mounted)	£126.34
CA-900035	35	35 ltr vessel and kit (base mounted)	£166.64
CA-900050CP	50	50 ltr vessel and kit (base mounted)	£267.49
CA-900080	80	80 ltr vessel and kit (base mounted)	£338.31

- Sealed system kit comprising: expansion vessel, filling loop, safety relief valve complete with gauge, mounting bracket to suit up to a 24 litre capacity and connecting T piece

robokit sealed system kit

Ref. no	Description	Price
CA-900000	½" sealed system kit (for 4 ltr to 80 ltr)	£72.25
CA-900001	¾" sealed system	£86.56
CA-100085	½" sealed system kit with remote SRV (SRV remote from robokit)	£89.36
CA-100000	½" sealed system kit without bracket	£68.10

- Sealed system filling kit comprising: filling loop, safety relief valve complete with gauge, mounting bracket to suit up to 24 litre capacity and connecting T piece
- Water regulations G24.1 and 24.2 compliant filling loop

expansion vessels for heating systems

Ref. no	Capacity	Diameter	Height	Inlet connection	max working pressure bar	Price
ZI-301004	4 ltr	225mm	195mm	¾" BSP	4 bar	£40.80
ZI-301008	8 ltr	220mm	295mm	¾" BSP	4 bar	£45.58
ZI-301012	12 ltr	294mm	281mm	¾" BSP	4 bar	£45.84
ZI-301018	18 ltr	290mm	400mm	¾" BSP	4 bar	£50.30
ZI-301024	24 ltr	324mm	415mm	¾" BSP	4 bar	£55.72
ZI-302035.CP	35 ltr + base	404mm	408mm	¾" BSP	4 bar	£111.20
ZI-302050.CP	50 ltr + base	404mm	530mm	¾" BSP	4 bar	£134.65
ZI-302080	80 ltr	450mm	608mm	¾" BSP	5 bar	£249.90
ZI-302105	105 ltr	500mm	665mm	¾" BSP	6 bar	£320.52
ZI-302150	150 ltr	500mm	897mm	¾" BSP	6 bar	£415.74
ZI-302200	200 ltr	600mm	812mm	¾" BSP	6 bar	£503.66
ZI-302250	250 ltr	630mm	957mm	¾" BSP	6 bar	£656.27
ZI-302300	300 ltr	630mm	1105mm	¾" BSP	6 bar	£788.09
ZI-302400	400 ltr	630mm	1510mm	¾" BSP	6 bar	£1077.94
ZI-302500	500 ltr	750mm	1340mm	1" BSP	6 bar	£1309.13
ZI-302600	600 ltr	750mm	1565mm	1" BSP	6 bar	£1636.39
ZI-302750	700 ltr	750mm	1755mm	1" BSP	6 bar	£1779.12

- Capacity from 4 litres to 700 litres
- 10°C - +99°C working temperature



components for sealed system

Ref. no	Description	Price
502649	15mm automatic air vent	£8.25
312430	½" M x F 3 bar safety relief valve	£9.71
311430	½" F x F 3 bar safety relief valve	£8.40
311530	¾" F x F 3 bar safety relief valve	£13.79
313430	½" F x F 3 bar safety relief valve with pressure gauge	£18.70
A314437 CST	½" F x F 3 bar safety relief valve with gauge port only	£13.44
313530	¾" F x F 3 bar safety relief valve with gauge	£24.58
A312401 CST	½" 3 bar safety relief valve	£9.53
A312438 CST	½" pushfit x ½" M 3 bar safety relief valve	£9.71
WI-557204	pressure gauge for robokit	£12.21
RS-MB	vessel mounting bracket 4 ltr - 18 ltr heating vessels	£6.49
303915	roboquattro - 4 way manifold and double check valve	£27.38
RS-MB2	vessel mounting bracket 24 ltr heating vessels	£16.66
CA-100700	hydro pro bracket (35 ltr only)	£22.23

filling loops

Ref. no	Description	Price
CA-300001	robofil auto-fill loop complete with PRV	£78.44
CA-300606	ecofil plus filling loop (G24 approved)	£13.64
CA-300611	ecofil plus filling loop (G24 approved) with caps and collars	£18.82
YU-JQAL304	cap and collar for filling loop	£2.00
JI-300608	robofil (poly bag - as with robokit) *	£38.47

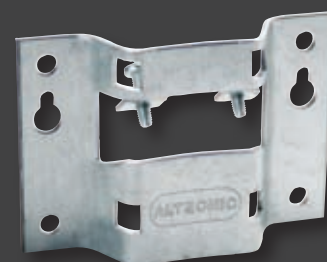
- Used to fill sealed systems from the mains cold water
- Approved flexible hoses complete with check valves
- Comply with water regulations and use WRAS approved components

* Water regulation G24.1 and 24.2 compliant where indicated

zilmet OEM - pro heating vessels

Ref. no	Capacity	Model	Description mm	Width mm	Height mm	Length	Price
ZI-305012	12 ltr	531	round flat exp vessel	387 Ø	140	n/a	£63.46
ZI-305018	18 ltr	531	round flat exp vessel	387 Ø	200	n/a	£70.69
ZI-306008	8 ltr	541	round flat exp vessel	324 Ø	129	n/a	£56.70
ZI-306010	10 ltr	541	round flat exp vessel	324 Ø	139	n/a	£58.82
ZI-306012	12 ltr	541	round flat exp vessel	324 Ø	169	n/a	£65.48
ZI-304006	6 ltr	537	rectangular flat exp vessel	490	105	200	£71.37
ZI-304012.3.4	12 ltr	537	rectangular flat exp vessel	490	170	200	£82.96

- Flat vessels for expansion on heating systems and boiler



pressurisation units



pressure gauges 50mm Ø dial

Ref. no	Description	Price
WI-557104	0 - 4 bar 1/4" back connection 50mm dial Ø	£12.21
WI-557204	0 - 4 bar 1/4" offset back connection 50mm dial Ø	£12.21
WI-557304	0 - 4 bar 1/4" bottom connection 50mm dial Ø	£12.21
WI-557306	0 - 6 bar 1/4" bottom connection 50mm dial Ø	£14.98
WI-557106	0 - 6 bar 1/4" back connection 50mm dial Ø	£14.98
WI-557310	0 - 10 bar 1/4" bottom connection 50mm dial Ø	£14.98

- 50mm dial, ABS black case with red pointer
- 1/4" BSP connection
- Working temperature -20°C / +80°C

pressure gauges 63mm Ø dial

Ref. no	Description	Price
WI-557410	0 - 10 bar back connection	£21.45

- 63mm dial, ABS black case with red pointer
- 1/4" BSP connection
- Working temperature -20°C / +80°C

matrix pressurisation units

Ref. no	Description	Price
MI-100001	matrix standard pressurisation unit floor	£1664.52
MI-100002	matrix compact pressurisation unit wall mounted	£1408.42

- Twin pump units available on request

The matrix standard and matrix compact pressurisation sets are fully packaged, suitable for use in close circuit heating systems. The units are supplied in a high quality zinc coated steel casing, finished in a textured white stove enamelled epoxy powder coating.

hydro-pro fixed membrane

Ref. no	Capacity	Dimensions	Connection	Price
ZI-30002S	2 litre	140 x 228mm	½"	£39.12
ZI-300005WH	5 litre	160 x 301mm	¾"	£57.38
ZI-300008WH	8 litre	200 x 298mm	¾"	£63.27
ZI-300012WH	12 litre	274 x 328mm	¾"	£69.26
ZI-300018WH	18 litre	274 x 361mm	¾"	£83.33
ZI-300024WH	24 litre	300 x 441mm	1"	£90.15
ZI-11A0003500	35 litre no base	380 x 400mm	1"	£132.05
ZI-11A0005000	50 litre vertical	380 x 537mm	1"	£173.59
ZI-11A0005002	50 litre horizontal	380 x 537mm	1"	£185.79
ZI-11A0008000	80 litre	450 x 600mm	1"	£247.74
ZI-11A0010500	105 litre	500 x 665mm	1¼"	£315.84
ZI-11A0015000	150 litre	500 x 895mm	1¼"	£464.17
ZI-11A0020000	200 litre	600 x 812mm	1¼"	£557.11
ZI-11A0025000	250 litre	630 x 1005mm	1¼"	£558.85
ZI-11A0030000	300 litre	630 x 1105mm	1¼"	£665.30
ZI-11A0040000	400 litre	630 x 1450mm	1¼"	£974.63
ZI-11A0060000	600 litre	750 x 1620mm	1¼"	£1608.89
RS-MB2	-	hydro-pro bracket (5-19 litre only)		£16.66
RS-MB24	-	hydro-pro bracket (24 litre only)	-	£19.81
CA-100700	-	bracket for 35ltr hydro-pro	-	£22.23

- Fixed diaphragm expansion vessel for potable water systems
- Working temperature -10°C to 99°C
- Working pressure 10 bar
- Test pressure 15 bar





inox-pro stainless steel expansion vessels for potable water

Ref. no	Capacity	Dimensions	Description	Connection	Price
ZI-300016S/S	0.16 litre	86 x 122mm	polished finish	½"	£54.47
ZI-300050S/S	0.5 litre	94 x 166mm	polished finish	½"	£69.06
ZI-300001.S/S	1 litre	116 x 196mm	polished finish	½"	£79.96
ZI-300002(P)	2 litre	140 x 228mm	polished finish	½"	£101.17
ZI-300016S/S.D	0.16 litre	86 x 122mm	dull finish	½"	£37.70
ZI-300050S/S.D	0.5 litre	94 x 166mm	dull finish	½"	£45.60
ZI-300001S/S.D	1 litre	116 x 196mm	dull finish	½"	£51.43
ZI-300012	12 litre	234 x 238mm	polished finish	¾"	£176.49
ZI-300118	18 litre	274 x 361mm	polished finish	1"	£244.75
ZI-322551	24 litre	270 x 480mm	polished finish	1"	£338.61
ZI-316160	60 litre (vertical)	380 x 850mm	polished finish	1"	£983.79

- Capacity from 0.16 litres to 60 litres
- Fixed diaphragm, suitable for temperatures up to 99°C
- Max working pressure 10 bar
- Testing pressure 15 bar
- For use in aggressive water conditions



shock arrester

Ref. no	Description	Box quantity	Price
525040	½" BSP mechanical type	25	£28.35
ZI-300016S/S	½" BSP pneumatic type	100	£54.47



ziflex 16 bar expansion vessels with interchangeable membrane

Ref. no	Capacity	Horizontal /Vertical	Diameter	Height	Connection	Price
ZI-311020	24 litre with legs	horizontal	270 mm	480 mm	1"	£146.36
ZI-311001	100 litre	vertical	450 mm	950 mm	1"	£1275.10
ZI-311002	200 litre	vertical	520 mm	1220 mm	1½"	£1711.24
ZI-311003	300 litre	vertical	630 mm	1370 mm	1½"	£1864.08
ZI-311005	500 litre	vertical	750 mm	1600 mm	1½"	£3551.03
ZI-311075	750 litre	vertical	750 mm	2140 mm	1½"	POA
ZI-311011	1000 litre	vertical	850 mm	2070 mm	1½"	POA

- Capacity from 24 litres to 1000 litres
- Interchangeable rubber membrane
- Galvanised carbon steel flange
- Max working pressure 16 bar (vertical only)

ultra pro expansion vessel with interchangeable membrane

Ref. no	Capacity	Horizontal / Vertical	Diameter	Height	Connection	Price
ZI-1100000806	8 litre	hori / vert*	204 mm	320 mm	3/4"	£62.78
ZI-1100001215	12 litre	hori / vert*	283 mm	310 mm	3/4"	£67.77
ZI-1100001940	19 litre	hori / vert*	277 mm	420 mm	3/4"	£68.61
ZI-332551	24 litre	horizontal	270 mm	480 mm	3/4"	£93.14
ZI-318051	50 litre	horizontal	380 mm	540 mm	1"	£233.81
ZI-318061	60 litre	horizontal	380 mm	680 mm	1"	£255.62
ZI-318081	80 litre	horizontal	450 mm	640 mm	1"	£314.07
ZI-318101	100 litre	horizontal	450 mm	765 mm	1"	£453.76
ZI-318201	200 litre	horizontal	550 mm	1089 mm	1 1/2"	£756.90
ZI-318301	300 litre	horizontal	630 mm	1237 mm	1 1/2"	£897.59
ZI-318050	50 litre	vertical	380 mm	770 mm	1"	£226.89
ZI-318060	60 litre	vertical	380 mm	850 mm	1"	£248.68
ZI-318080	80 litre	vertical	450 mm	850 mm	1"	£303.17
ZI-318100	100 litre	vertical	450 mm	935 mm	1"	£443.82
ZI-318200	200 litre	vertical	550 mm	1253 mm	1 1/2"	£735.12
ZI-318300	300 litre	vertical	630 mm	1370 mm	1 1/2"	£883.73
ZI-318500	500 litre	vertical	750 mm	1600 mm	1 1/2"	£1486.06
ZI-318750	750 litre	vertical	750 mm	2140 mm	1 1/2"	£2313.72
ZI-3181000	1000 litre	vertical	850 mm	2700 mm	1 1/2"	£4747.50

- Capacity from 24 litres to 1000 litres, stainless steel flange
- Working temperature -10°C to 99°C
- Working pressure 10 bar, testing pressure 15 bar, except for the 1000 litre which has a working pressure of 8 bar
- Pre-charge pressure 2 bar

WRAS
APPROVED
PRODUCT

hy-pro epdm stainless steel flange

Ref. no	Capacity	Diameter	Height	Connection	Type	Price
ZI-11H0001202	12 litre	270 mm	296 mm	3/4 BSP	M	£46.59
ZI-11H0001902	19 litre	270 mm	390 mm	3/4 BSP	M	£54.30
ZI-11H0002402	24 litre	270 mm	461 mm	3/4 BSP	M	£62.22

NEW!

replacement membranes

Ref. no	Capacity	Description	Price
ZI-342020	24 litre	butyl membrane	£40.70
ZI-342080	50-60-80 litre	butyl membrane	£105.34
ZI-342100	100 litre	butyl membrane	£141.89
ZI-342200	200 litre	butyl membrane	£183.67
ZI-342300	300 litre	butyl membrane	£378.89
ZI-342500	500 litre	butyl membrane	£626.55
ZI-342750	750-1000 litre	butyl membrane	£789.80

- To suit ultra pro vessels





water heater accessory packs

Ref. no	Description	Price
CA-100148	water heater pack 1 includes: 1 x 1/2" PRV at 3.5 bar, 1 x expansion vessel 2 litre, 1 x 1/2" SRV at 6 bar 312460, 1 x 15mm single check valve	£115.13
CA-100149	water heater pack 2 includes: 1 x expansion vessel 2 litre, 1 x 1/2" safety valve, 1 x 15mm single check valve	£76.65
CA-100150	water heater pack 4 includes: 1 x 1/2" PRV at 3.5 bar, 1 x expansion vessel 2 litre, 1 x 15mm single check valve	£105.58
CA-100151	water heater pack 5 includes: 1 x expansion vessel 2 litre, 1 x 15mm single check valve	£67.59
CA-100025	water heater pack 6 includes: 1 x 22mm x 3/4" PRV at 3.5 bar, 1 x SRV push fit at 6 bar	£116.98

Installation packs suitable for installation of single / multipoint water heaters.



temperature / pressure relief valves

Ref. no	Description	Box quantity	Price
309440 CST	1/2" 4 bar 90°C	20	£31.51
309470 CST	1/2" 7 bar 90°C	20	£31.51
309400 CST	1/2" 10 bar 90°C	20	£31.51
309500 CST	3/4" 10 bar 90°C	20	£32.83
309570 CST	3/4" 7 bar 90°C	20	£37.20
309473 CST	1/2" 7 bar 90°C	20	£31.51

Pressure and temperature relief valves for use when the system calls for two controls. Designed for use on unvented hot water supply systems.



tundishes

Ref. no	Description	Price
* AP-400001	1/2" M x 3/4" F plastic angle tundish	£6.71
* AP-400002	3/4" M x 1" F plastic angle tundish	£11.89
552140	1/2" angle aluminium tundish	£17.07
552150	3/4" angle aluminium tundish	£18.01
552160	1" x 1 1/4" angle aluminium tundish	£33.58
* AP-400003	3/4" M x 1/2" F plastic straight tundish	£8.13
552050	3/4" straight aluminium tundish	£10.08
552070	1 1/4" straight aluminium tundish	£21.46
* AP-400010	15mm x 22mm straight tundish with plastic nuts	£9.44
CA-100113	22mm x 1" F plastic straight tundish with nut and olive	£11.36

Suitable for use where air gap or air break is required in sealed or unvented systems.



automatic air vents

Ref. no	Size	Type	Discharge Pressure	Max working Temperature	Box quantity	Price
502649	15mm	robocal	6 bar	115°C	100	£8.25
502420	¼"	robocal	4 bar	115°C	50	£8.27
502430	⅜"	robocal	4 bar	115°C	50	£6.97
502630	⅜"	robocal	6 bar	115°C	100	£7.89
502640	½"	robocal	6 bar	115°C	100	£7.68
502730	⅜"	robocal/ check valve	6 bar	115°C	100	£9.65
502530	⅜"	robocal/ check valve	4 bar	115°C	100	£8.65
CA-100099	⅜"	robocal/ check valve ½"	6 bar	115°C	100	£9.51
502030	⅜"	minical	2.5 bar	120°C	100	£9.32
502040	½"	minical	2.5 bar	120°C	100	£8.97
502130	⅜"	minical/ check valve	2.5 bar	120°C	100	£11.28
502050	¾"	minical/ hygroscopic cap	2.5 bar	120°C	100	£14.34
502060	1"	minical/ hygroscopic cap	2.5 bar	120°C	100	£15.28
501500	¾"	maxcal	6 bar	120°C	1	£214.28
504401	½"	aercal	2.5 bar	120°C	25	£21.96
250031	⅜"	for solar heating	10 bar	150°C	50	£29.15

- The range of automatic air vents is operated via a float mechanism and is designed for the removal of air from systems

check valves for automatic air vents

Ref. no	Size	Type	Max working pressure	Max working Temperature	Box quantity	Price
561230	¼" x ⅜"	check valve	10 bar	115°C	100	£3.75
561300	⅜" x ⅜"	check valve	10 bar	115°C	100	£3.75
561340	⅜" x ½"	check valve	10 bar	115°C	100	£3.75
561400	½" x ½"	check valve	10 bar	115°C	100	£4.35
508011	⅛"	hygroscopic air vent	10 bar	100°C	100	£3.87
508021	¼"	hygroscopic air vent	10 bar	100°C	100	£4.64
508031	⅜"	hygroscopic air vent	10 bar	100°C	100	£5.43
508041	½"	hygroscopic air vent	10 bar	100°C	100	£6.53
337121	¼"	man air vent/drain	6 bar	85°C	200	£7.75
337131	⅜"	man air vent/drain	6 bar	85°C	200	£7.75





discal automatic air separators

Ref. no	Size	Connections	Type	Weight kg	Price
551002	22mm	copper x copper - without drain	comp	0.90	£89.02
551003	1/2"	screwed iron - without drain	F x F	0.90	£95.00
551005	3/4"	screwed iron	F x F	1.70	£105.48
551006	1"	screwed iron	F x F	1.70	£121.09
551007	1 1/4"	screwed iron	F x F	2.20	£146.71
551008	1 1/2"	screwed iron	F x F	2.20	£165.75
551009	2"	screwed iron	F x F	2.50	£228.90
551050	DN50	flange x flange	PN16	15.00	£1180.93
551060	DN65	flange x flange	PN16	15.50	£1239.85
551080	DN80	flange x flange	PN16	28.00	£2425.37
551100	DN100	flange x flange	PN16	30.00	£2513.07

- The discal range of air eliminators is designed for use with heating circuits to provide an efficient method of air removal
- Maximum working pressure 10 bar
- Maximum working temperature 120°C
- Maximum glycol concentration 50%

discal dirt and air separators

Ref. no	Size	Connections	Type	Weight kg	Price
546050	DN50	flange x flange	PN16	18.00	£1291.52
546060	DN65	flange x flange	PN16	19.00	£1355.21
546080	DN80	flange x flange	PN16	33.00	£2630.80
546100	DN100	flange x flange	PN16	35.00	£2722.80
546120	DN125	flange x flange	PN16	82.00	£4415.94
546150	DN150	flange x flange	PN16	35.00	£4518.55
546051	DN50	welded socket x welded socket	PN16	16.50	£1457.83
546061	DN65	welded socket x welded socket	PN16	16.50	£1641.34
546081	DN80	welded socket x welded socket	PN16	28.00	£3081.78
546101	DN100	welded socket x welded socket	PN16	29.00	£3195.53
546121	DN120	welded socket x welded socket	PN16	70.00	£4939.21
546151	DN150	welded socket x welded socket	PN16	70.00	£5009.33

- Range of dirt and air separators for use in commercial applications

dirtcal dirt separators

Ref. no	Size	Connections	Type	Price
546205	¾"	screwed iron	F x F	POA
546206	1"	screwed iron	F x F	£191.89
546207	1¼"	screwed iron	F x F	POA
546208	1½"	screwed iron	F x F	POA
546209	2"	screwed iron	F x F	£269.00
546905	¾"	screwed iron	F x F	POA
546906	1"	screwed iron	F x F	POA
546902	22mm	compression	copper x copper	POA

NEW!**sepcol hydraulic separator manifold**

Ref. no	Description	Price
559021	2 + 1 built in version with preformed insulation	£460.22
559022	2 + 2 external use with preformed insulation and brackets	£543.58
559031	3 + 1 external use with preformed insulation and brackets	£829.73

- Maximum working pressure : 6 bar
- Working temperature range : 0 - 100°C (0 - 100°C with insulation)
- With a hot preformed insulation shell in closed cell expanded PEX
- Complete with fixing brackets



safety relief valves



safety relief valves series 311

Ref. no	Size	Series type	Pressure setting bar	Weight kg	Box quantity	Price
311425	1/2" x 1/2"	311 - F x F	2.50	0.13	50	£9.71
311430	1/2" x 1/2"	311 - F x F	3.00	0.13	50	£8.40
311460	1/2" x 1/2"	311 - F x F	6.00	0.13	50	£9.71
311470	1/2" x 1/2"	311 - F x F	7.00	0.13	50	£9.71
311480	1/2" x 1/2"	311 - F x F	8.00	0.13	50	£9.71
311525	3/4" x 3/4"	311 - F x F	2.50	0.20	50	£13.79
311530	3/4" x 3/4"	311 - F x F	3.00	0.20	50	£13.79
311560	3/4" x 3/4"	311 - F x F	6.00	0.20	50	£13.79
311570	3/4" x 3/4"	311 - F x F	7.00	0.20	50	£16.56
311580	3/4" x 3/4"	311 - F x F	8.00	0.20	50	£16.56

WRAS
APPROVED
PRODUCT

safety relief valves series 312

Ref. no	Size	Series type	Pressure setting bar	Weight kg	Box quantity	Price
312405 CST	1/2" x 1/2"	312 - M x F	4.00	0.20	50	£13.50
312425	1/2" x 1/2"	312 - M x F	2.50	0.13	50	£9.71
312430	1/2" x 1/2"	312 - M x F	3.00	0.13	50	£9.71
312460	1/2" x 1/2"	312 - M x F	6.00	0.13	50	£9.71
312470	1/2" x 1/2"	312 - M x F	7.00	0.13	50	£9.71
312480	1/2" x 1/2"	312 - M x F	8.00	0.13	50	£9.71

WRAS
APPROVED
PRODUCT

safety relief valves series 313

Ref. no	Size	Series type	Pressure setting bar	Weight kg	Box quantity	Price
313425	1/2" x 1/2"	313 - F x F	2.50	0.15	50	£18.70
313430	1/2" x 1/2"	313 - F x F	3.00	0.15	50	£18.70
313460	1/2" x 1/2"	313 - F x F	6.00	0.15	50	£18.70
313470	1/2" x 1/2"	313 - F x F	7.00	0.15	50	£18.70
313480	1/2" x 1/2"	313 - F x F	8.00	0.15	50	£18.70
313525	3/4" x 3/4"	313 - F x F	2.50	0.18	50	£24.58
313530	3/4" x 3/4"	313 - F x F	3.00	0.18	50	£24.58
313560	3/4" x 3/4"	313 - F x F	6.00	0.18	50	£24.58
313570	3/4" x 3/4"	313 - F x F	7.00	0.18	50	£24.58
313580	3/4" x 3/4"	313 - F x F	8.00	0.18	50	£26.51
A312401 CST	1/2" x 1/2"	pushfit x F	3.00	0.18	65	£9.53
A312438 CST	1/2" x 1/2"	pushfit x M	3.00	0.18	65	£9.71

WRAS
APPROVED
PRODUCT

safety relief valves series 314

Ref. no	Size	Series type	Pressure setting bar	Weight kg	Box quantity	Price
314425	1/2" x 1/2"	314 - M x F	2.50	0.24	50	£18.72
314430	1/2" x 1/2"	314 - M x F	3.00	0.24	50	£18.72
314460	1/2" x 1/2"	314 - M x F	6.00	0.24	50	£18.72
314480	1/2" x 1/2"	314 - M x F	8.00	0.24	50	£18.72
A314437 CST	1/2" x 1/2"	314 - M x F	3.00	0.24	48	£13.44

WRAS
APPROVED
PRODUCT



safety relief valves series 513

Ref. no	Size	Series type	Pressure setting bar	Weight kg	Box quantity	Price
513425	1/2" x 1/2"	513 - F x F	2.50	0.18	50	£13.44
513430	1/2" x 1/2"	513 - F x F	3.00	0.18	50	£13.44
513460	1/2" x 1/2"	513 - F x F	6.00	0.18	50	£15.45
513470	1/2" x 1/2"	513 - F x F	7.00	0.18	50	£16.29
513480	1/2" x 1/2"	513 - F x F	8.00	0.18	50	£17.51
513625	1" x 1 1/4"	513 - F x F	2.50	0.84	50	£66.52
513630	1" x 1 1/4"	513 - F x F	3.00	0.84	50	£58.58
513660	1" x 1 1/4"	513 - F x F	6.00	0.84	50	£67.10
513670	1" x 1 1/4"	513 - F x F	7.00	0.18	50	£64.47
513680	1" x 1 1/4"	513 - F x F	8.00	0.84	50	£59.13
513725	1 1/4" x 1 1/2"	513 - F x F	2.50	2.07	50	£132.56
513730	1 1/4" x 1 1/2"	513 - F x F	3.00	2.07	50	£157.24
513760	1 1/4" x 1 1/2"	513 - F x F	6.00	2.07	50	£166.85
513770	1 1/4" x 1 1/2"	513 - F x F	7.00	2.07	50	£168.62
513780	1 1/4" x 1 1/2"	513 - F x F	8.00	2.07	50	£172.40

WRAS
APPROVED
PRODUCT

safety relief valves series 514

Ref. no	Size	Series type	Pressure setting bar	Weight kg	Box quantity	Price
514425	1/2" x 1/2"	514 - M x F	2.50	0.18	50	£15.19
514430 CST	1/2" x 1/2"	514 - M x F	3.00	0.18	50	£13.44
514460	1/2" x 1/2"	514 - M x F	6.00	0.18	50	£14.86
532043	1/2" x 3/4"	532 - F x F	3.00	0.18	50	£24.68

WRAS
APPROVED
PRODUCT



pump controls & accessories



single check valves

Ref. no	Description	Price
BI-100034	15mm nickel plated	£5.62
BA-032015000	15mm brass	£8.57
BA-032022000	22mm brass	£12.10
BA-032028000	28mm brass	£18.58

WRAS
APPROVED
PRODUCT

double check valves

Ref. no	Description	Price
303615	15mm double check c/w isolating valve nickel plated DZR body	£20.18
AI-903215	15mm nickel plated DZR body	£12.01
AI-903222	22mm nickel plated DZR body	£20.24
AI-903228	28mm nickel plated DZR body	£28.25
AI-903032	1¼" F/F double check valve DZR	£185.44
AI-903040	1½" F/F double check valve DZR	£227.72
AI-903050	2" F/F double check valve DZR	£271.77

WRAS
APPROVED
PRODUCT

non return valves

Ref. no	Size	Connections	Type	Weight kg	Price
BA-300020	¼"	screwed iron	F x F	0.09	£5.48
BA-300030	⅜"	screwed iron	F x F	0.75	£4.76
BA-300040	½"	screwed iron	F x F	0.10	£4.89
BA-300050	¾"	screwed iron	F x F	0.15	£6.57
BA-300060	1"	screwed iron	F x F	0.25	£8.68
BA-300070	1¼"	screwed iron	F x F	0.35	£13.55
BA-300080	1½"	screwed iron	F x F	0.47	£17.05
BA-300090	2"	screwed iron	F x F	0.71	£25.56
BA-300100	2½"	screwed iron	F x F	1.26	£53.78
BA-300110	3"	screwed iron	F x F	1.81	£75.07
BA-300120	4"	screwed iron	F x F	3.10	£128.42

- Spring loaded universal check valve with soft seating and stainless steel spring
- Other models available on request
- Maximum working pressure ¼" - 1" : 16 bar, 1¼" - 2" : 10 bar, 2½" - 4" : 8 bar
- Maximum working temperature : 110°C

ballstops

Ref. no	Size	Connection	Handle type	Type	Weight kg	Price
323040	1/2"	screwed iron	butterfly	F x F	0.28	£22.67
323050	3/4"	screwed iron	butterfly	F x F	0.37	£29.12
323060	1"	screwed iron	butterfly	F x F	0.63	£44.28
323070	1 1/4"	screwed iron	lever	F x F	1.01	£71.58
323080	1 1/2"	screwed iron	lever	F x F	1.60	£125.33
323090	2"	screwed iron	lever	F x F	2.80	£180.68
332400	1/2"	screwed iron	butterfly	M x F	0.40	£21.18
333500	3/4" x 3/4"	screwed iron	butterfly	F x F Sw	0.42	£41.40
334500	3/4" x 3/4"	screwed iron	butterfly	M x F Sw	0.42	£29.21

- The ballstop range of in line lever ball valves with an integrated check valve situated within the ball of the valve
- Maximum working pressure : 16 bar
- Maximum working temperature : 95°C



foot filters

Ref. no	Size	Box quantity	Price
BA-030015000	1/2"	50	£3.96
BA-030020000	3/4"	25	£5.27
BA-030025000	1"	20	£5.92
BA-030032000	1 1/4"	10	£8.04
BA-030040000	1 1/2"	8	£8.21
BA-030050000	2"	5	£12.05
BA-030065	2 1/2"	5	£24.65
BA-030080000	3"	3	£25.78
BA-030100	4"	2	£37.21

- For use with our non-return valves

manifold connectors

Ref. no	Size	Box quantity	Price
IT-500001	3 way connector	50	£8.19
IT-500002	5 way connector (71.5mm long)	50	£8.19
IT-500003	5 way connector (82.0mm long)	50	£8.19



thermostats



room thermostats

Ref. no	Description	Price
TG-545032	240v SP 5/30°C	£19.86
TG-544819	240v frost stat, tamper proof cover	£21.68

surface contact thermostats

Ref. no	Description	Price
TG-545610	20/90°C 240v cylinder/pipe thermostat grey	£21.35

immersion thermostat - 1/2" pocket adjustable

Ref. no	Description	Price
TG-542470	0°/90°C adjustable 100mm stem SPDT	£37.89

dual immersion thermostat - 1/2" pocket x 120mm stem

Ref. no	Description	Price
TG-542816	60/90°C grey / adjustable limit / manual reset	£70.06

control thermostats

Ref. no	Description	Price
TG-540043	-35/+35°C 1m cap SPDT	£26.26
TG-540030	0/40°C 1m cap SPDT	£26.26
TG-540010	0/90°C 1m cap SPDT	£26.26
TG-540310	0/90°C 2m cap SPDT	£26.26
TG-540160	0/120°C 1m cap SPDT	£26.26
TG-540140	40/210°C 1m cap SPDT	£26.26
TG-540020	50/300°C 1m cap SPDT	£26.26

- Panel mounting, liquid filled capillary and sensing element (not including knobs and bezels)

safety limit thermostats

Ref. no	Description	Price
TG-541510	adjustable 90/110°C - 15a / 250v / manual reset	£24.35

thermostatic mixing valves

merchant blending valves

Ref. no	Size	Connections	Type	Price
CA-100822	15mm	copper x copper	compression	£79.41
CA-100824	22mm	copper x copper	compression	£108.21
CA-100827	15mm	copper x copper	compression inc. service valves	£102.66
CA-100828	22mm	copper x copper	compression inc. service valves	£119.34

NEW!



WRAS
APPROVED
PRODUCT



DTC 45-65° tempering valve

Ref. no	Size	Connections	Type	Price
521814	½"	screwed iron	domestic tempering valve	£86.99
521815	¾"	screwed iron	domestic tempering valve	£89.59
521816	1"	screwed iron	domestic tempering valve	£131.74
521817	15mm	copper x copper	domestic tempering valve	POA
521818	22mm	copper x copper	domestic tempering valve	POA
521819	28mm	copper x copper	domestic tempering valve	POA

NEW!



OEM thermostatic mixing valve

Ref. no	Size	Connections	Type	Price
521531	G½"	F x F x F	oem mixing valve	POA

NEW!

careflo thermostatic fail safe mixing valve

Ref. no	Description	Box quantity	Price
521215	15mm mixcal careflo	10	£144.25
521222	22mm mixcal careflo	10	£148.67
CA-MX5215	15mm MX mixcal careflo	10	£191.55
CA-MX5222	22mm MX mixcal careflo	10	£196.77
CA-100065	15mm conversion kit	1	£44.00
CA-100066	22mm conversion kit	1	£46.35
CA-100147	careflo service kit	1	£56.74

The mixcal careflo fail safe thermostatic mixing valve has been specifically designed and manufactured to meet the requirements of the latest national health service model engineering specification - D08 and BS 7942 for use in care homes.

- Temperature adjust range : 30 - 50°C
- Temperature control : ±2°C
- Maximum hot inlet temperature : 85°C
- Minimum temperature differential requirement for fail safe : 10°C

WRAS
APPROVED
PRODUCT



thermostatic mixing valves



mixcal III thermostatic fail safe mixing valve

Ref. no	Description	Box quantity	Price
521115	15mm mixcal III	10	£122.35
521122	22mm mixcal III	10	£128.55
CA-MX5115	15mm MX mixcal III	10	£166.73
CA-MX5122	22mm MX mixcal III	10	£172.61
CA-100224	mixcal III service kit	1	£52.60

Fail safe thermostatic mixing valve, complies with the requirements of BS1415 part II.

- Temperature adjust range : 30 - 65°C
- Temperature control : $\pm 2^{\circ}\text{C}$
- Maximum hot inlet temperature : 85°C
- Minimum temperature differential requirement for fail safe : 10°C

WRAS
APPROVED
PRODUCT



mixcal mixpro® series 523

Ref. no	Size	Connections	Type	Price
523040	1/2"	screwed iron	M x M x M without check valves	£571.98
523050	3/4"	screwed iron	M x M x M without check valves	£614.30
523060	1"	screwed iron	M x M x M without check valves	£741.67
523070	1 1/4"	screwed iron	M x M x M without check valves	£822.67
523080	1 1/2"	screwed iron	M x M x M without check valves	£1273.60
523090	2"	screwed iron	M x M x M without check valves	£1483.39
523053	3/4"	screwed iron	M x M x M with check valves	£675.73
523063	1"	screwed iron	M x M x M with check valves	£861.20
523073	1 1/4"	screwed iron	M x M x M with check valves	£940.18
523052	22mm	compression	Cu x Cu x Cu with check valves	£719.25
523062	28mm	compression	Cu x Cu x Cu with check valves	£945.68

The new mixcal mixpro® range of thermostatic mixing valves is designed for use on centralised and general mixing valve applications.

- Temperature adjust range : 30 - 65°C
- Temperature control : $\pm 2^{\circ}\text{C}$
- Maximum hot inlet temperature : 85°C

WRAS
APPROVED
PRODUCT



antiscald device

Ref. no	Size	Type	Description	Price
600140	1/2"	M x F	antiscald device hot water @ 48°C	£53.93



MX valves

Ref. no	Description	Price
AI-495015	pair of 15mm MX valves ART 5212 and mixcal III	£76.62
AI-495022	pair of 22mm MX valves ART 5212 and mixcal III	£78.13

The MX range of valves c/w isolation valve, check valve and test port.

The MX valves have been designed specifically for use with our range of thermostatic mixing valves.



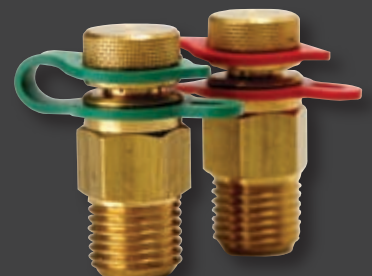
thermostatic blending valves - non fail safe valves for general use

Ref. no	Size	Description	Box quantity	Price
520430	1/2"	30 - 48°C	20	£74.94
520440	1/2"	40 - 60°C	20	£74.94
520530	3/4"	30 - 48°C	20	£78.92
520540	3/4"	40 - 60°C	20	£78.92
520630	1"	30 - 48°C	20	£171.34
520640	1"	40 - 60°C	20	£171.34



accessories for thermostatic mixing valves

Ref. no	Description	Price
CA-100147	careflo service kit	£56.74
CA-100065	15mm conversion kit	£44.00
CA-100066	22mm conversion kit	£46.35
100000	1/4" temperature measuring point	£38.19
CA-100224	mixcal III service kit	£52.60



pressure reducing valves



prescal - series 533 pressure reducing valves

Ref. no	Size	Connections	Type	Weight kg	Price
533641	15mm	copper x copper	compression	0.41	£43.45
533651	22mm	copper x copper	compression	0.45	£46.52
533741	15mm	copper x copper	compression with gauge port	0.46	£45.24
533751	22mm	copper x copper	compression with gauge port	0.51	£48.33
533841	15mm	copper x copper	compression with pressure gauge	0.55	£50.68
533851	22mm	copper x copper	compression with pressure gauge	0.57	£53.76
533041	1/2"	screwed iron	F x F	0.39	£49.88
533051	3/4"	screwed iron	F x F	0.42	£52.46
533441	1/2"	screwed iron	F x F - with gauge port	0.45	£53.46
533451	3/4"	screwed iron	F x F - with gauge port	0.46	£61.25
533241	1/2"	screwed iron	F x F - with pressure gauge	0.51	£61.67
533251	3/4"	screwed iron	F x F - with pressure gauge	0.52	£65.80
533151	3/4"	screwed iron	M x F swivel	0.46	£51.73
CA-100594	22mm	copper x copper	22mm x 15mm pressure reducer	0.60	£60.53

The series 533 range of pressure reducing valves is designed for domestic and semi commercial applications.



- Maximum pressure at inlet : 12 bar
- Maximum working temperature : 65°C
- Outlet adjustment range : 1 - 6 bar (dynamic control only)

prescal - series 535 dial up pressure reducing valve

Ref. no	Size	Connections	Type	Weight kg	Price
535022	22mm	compression	without pressure gauge	0.73	£60.97
535041	1/2"	screwed iron	M x M - with pressure gauge	0.90	£73.65
535051	3/4"	screwed iron	M x M - with pressure gauge	1.06	£80.93
535061	1"	screwed iron	M x M - with pressure gauge	1.37	£101.18
535071	1 1/4"	screwed iron	M x M - with pressure gauge	3.18	£192.58
535081	1 1/2"	screwed iron	M x M - with pressure gauge	3.67	£239.34
535091	2"	screwed iron	M x M - with pressure gauge	4.93	£383.03
535040	1/2"	screwed iron	M x M - without pressure gauge	0.82	£62.86
535050	3/4"	screwed iron	M x M - without pressure gauge	0.98	£70.13
535060	1"	screwed iron	M x M - without pressure gauge	1.30	£90.36
535070	1 1/4"	screwed iron	M x M - without pressure gauge	3.06	£179.94
535080	1 1/2"	screwed iron	M x M - without pressure gauge	3.55	£226.37
535090	2"	screwed iron	M x M - without pressure gauge	4.78	£363.42

The series 535 range of dial up pressure reducing valves is designed for semi commercial and industrial applications.



- Maximum pressure at inlet : 16 bar
- Maximum working temperature : 60°C
- Outlet adjustment range : 1 - 6 bar (dynamic and static control)

prescal - series 536 pressure reducing valve

Ref. no	Size	Connections	Type	Weight kg	Price
536040	1/2"	screwed iron	M x M - without pressure gauge	1.20	£94.93
536050	3/4"	screwed iron	M x M - without pressure gauge	1.60	£108.96
536060	1"	screwed iron	M x M - without pressure gauge	1.90	£112.83
536070	1 1/4"	screwed iron	M x M - without pressure gauge	3.04	£190.70
536080	1 1/2"	screwed iron	M x M - without pressure gauge	3.54	£235.90
536041	1/2"	screwed iron	M x M - with pressure gauge	1.25	£103.50
536051	3/4"	screwed iron	M x M - with pressure gauge	1.82	£131.12
536061	1"	screwed iron	M x M - with pressure gauge	1.95	£134.77
536071	1 1/4"	screwed iron	M x M - with pressure gauge	3.14	£202.38
536081	1 1/2"	screwed iron	M x M - with pressure gauge	3.64	£248.51
536240	1/2"	screwed iron	F x F - without pressure gauge	1.10	£94.93
536250	3/4"	screwed iron	F x F - without pressure gauge	1.52	£108.96
536260	1"	screwed iron	F x F - without pressure gauge	1.53	£112.83
536241	1/2"	screwed iron	F x F - with pressure gauge	1.50	£85.76
CA-536251	3/4"	screwed iron	F x F - with pressure gauge	1.57	£106.37
536261	1"	screwed iron	F x F - with pressure gauge	1.58	£199.60
536660	DN65	flange	ISO 7005-1 PN 16 flanged	19.40	£1542.47

The series 536 range of pressure reducing valves is designed for semi commercial and industrial applications.

- Maximum pressure at inlet : 25 bar
- Maximum working temperature : 65°C
- Outlet adjustment range : 0.5 - 6 bar (static and dynamic control)



prescal - series 300 pressure reducing valve

Ref. no	Size	Connections	Weight kg	Price
FL-30050	DN 50	flanged	12	POA
FL-30065	DN 65	flanged	13	£3621.94
FL-30080	DN 80	flanged	22	£3943.52
FL-300100	DN 100	flanged	37	£4794.60
FL-300150	DN 150	flanged	80	POA
FL-300200	DN 200	flanged	157	POA
FL-300250	DN 250	flanged	245	POA
FL-300300	DN 300	flanged	405	POA

The series 300 range is designed for commercial and industrial applications.

- Flanged PN16 (PN25 on request)
- Pilot operated offering total control
- Maximum operating temperature : 85°C



backflow preventors



RPZ valves

Ref. no	Size	Description	Type	Price
574040	1/2"	screwed iron	M x M	£509.57
574050	3/4"	screwed iron	M x M	£518.81
574600	1"	screwed iron	M x M	£537.29
574700	1 1/4"	screwed iron	M x M	£534.62
574800	1 1/2"	screwed iron	M x M	£1328.10
574900	2"	screwed iron	M x M	£1611.68
575006	DN65	flange	ISO 7001 - 1 PN16 flange	£4101.73
575008	DN80	flange	ISO 7001 - 1 PN16 flange	£4843.48
575010	DN100	flange	ISO 7001 - 1 PN16 flange	£5856.15

The altecnic range of BA type back flow prevention devices designed for applications in water distribution systems to prevent back siphonage and back flow in fluid category 4 applications.



- Maximum pressure at inlet : 16 bar
- Maximum working temperature : 65°C

RPZ valves - complete assemblies

Ref. no	Size	Description	Type	Price
570004	1/2"	screwed iron	complete with RPZ, isolation valve & strainer	£622.61
570006	1"	screwed iron	complete with RPZ, isolation valve & strainer	£631.81
570007	1 1/4"	screwed iron	complete with RPZ, isolation valve & strainer	£714.56
570008	1 1/2"	screwed iron	complete with RPZ, isolation valve & strainer	£1573.70
570009	2"	screwed iron	complete with RPZ, isolation valve & strainer	£1885.79

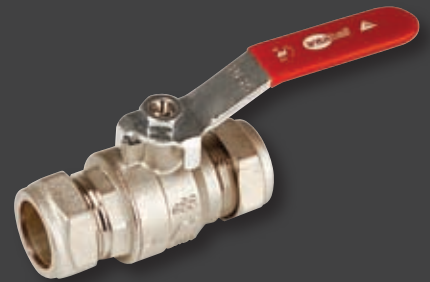


intaball lever ball valves - red handle

Ref. no	Size	Connections	Type	Weight kg	Box quantity	Price
Al-373R15	15mm	copper x copper	compression	0.12	20	£6.78
Al-373R22	22mm	copper x copper	compression	0.13	10	£10.77
Al-373R28	28mm	copper x copper	compression	0.17	8	£17.71
Al-373R35	35mm	copper x copper	compression	1.02	4	£34.71
Al-373R42	42mm	copper x copper	compression	1.52	2	£50.43
Al-373R54	54mm	copper x copper	compression	2.38	4	£81.81

- Maximum working pressure 25 bar
- Temperature range -20°C - 99°C

WRAS
APPROVED
PRODUCT



intaball lever ball valves - red handle

Ref. no	Size	Connections	Type	Weight kg	Box quantity	Price
Al-171R02	1/4"	screwed iron	F x F	0.12	30	£5.24
Al-171R03	3/8"	screwed iron	F x F	0.13	30	£5.24
Al-171R04	1/2"	screwed iron	F x F	0.17	25	£5.32
Al-171R05	3/4"	screwed iron	F x F	0.26	15	£7.69
Al-171R06	1"	screwed iron	F x F	0.44	10	£12.94
Al-171R07	1 1/4"	screwed iron	F x F	0.65	6	£20.35
Al-171R08	1 1/2"	screwed iron	F x F	0.98	3	£27.99
Al-171R09	2"	screwed iron	F x F	1.58	2	£43.53
Al-171R10	2 1/2"	screwed iron	F x F	3.08	6	£104.22
Al-171R11	3"	screwed iron	F x F	4.78	4	£154.76
Al-171R12	4"	screwed iron	F x F	7.79	2	£268.83

- Maximum working pressure 25 bar
- Temperature range -20°C - 99°C

WRAS
APPROVED
PRODUCT





intaball lever ball valves - blue handle

Ref. no	Size	Connections	Type	Weight kg	Box quantity	Price
AI-373B15	15mm	copper x copper	compression	0.12	20	£6.78
AI-373B22	22mm	copper x copper	compression	0.13	10	£10.77
AI-373B28	28mm	copper x copper	compression	0.17	8	£17.71
AI-373B35	35mm	copper x copper	compression	1.02	4	£34.71
AI-373B42	42mm	copper x copper	compression	1.52	2	£50.43
AI-373B54	54mm	copper x copper	compression	2.38	4	£81.81

- Maximum working pressure 25 bar
- Temperature range -20°C - 99°C



intaball lever ball valves - blue handle

Ref. no	Size	Connections	Type	Weight kg	Box quantity	Price
AI-171B02	1/4"	screwed iron	F x F	0.12	30	£5.24
AI-171B03	3/8"	screwed iron	F x F	0.13	30	£5.24
AI-171B04	1/2"	screwed iron	F x F	0.17	25	£5.32
AI-171B05	3/4"	screwed iron	F x F	0.26	15	£7.69
AI-171B06	1"	screwed iron	F x F	0.44	10	£12.94
AI-171B07	1 1/4"	screwed iron	F x F	0.65	6	£20.35
AI-171B08	1 1/2"	screwed iron	F x F	0.98	3	£27.99
AI-171B09	2"	screwed iron	F x F	1.58	2	£43.53
AI-171B10	2 1/2"	screwed iron	F x F	3.08	6	£104.22
AI-171B11	3"	screwed iron	F x F	4.78	4	£154.76
AI-171B12	4"	screwed iron	F x F	7.79	2	£268.83

- Maximum working pressure 25 bar
- Temperature range -20°C - 99°C



intaball ball valves - red butterfly handle

Ref. no	Size	Connections	Type	Weight kg	Box quantity	Price
AI-373RB5	15mm	copper x copper	compression	0.12	20	£6.78
AI-373RB2	22mm	copper x copper	compression	0.13	15	£10.77
AI-373RB8	28mm	copper x copper	compression	0.17	8	£17.71
AI-171RB4	1/2"	screwed iron	F x F	0.15	30	£5.32
AI-171RB5	3/4"	screwed iron	F x F	0.23	20	£7.48

WRAS
APPROVED
PRODUCT



intaball ball valves - blue butterfly handle

Ref. no	Size	Connections	Type	Weight kg	Box quantity	Price
AI-373115	15mm	copper x copper	compression	0.12	20	£6.78
AI-373222	22mm	copper x copper	compression	0.13	15	£10.77
AI-373228	28mm	copper x copper	compression	0.17	8	£17.71
AI-171BB4	1/2"	screwed iron	F x F	0.15	30	£5.32
AI-171BB5	3/4"	screwed iron	F x F	0.23	20	£7.48

WRAS
APPROVED
PRODUCT



service valve complete with black lever handle

Ref. no	Size	Connections	Type	Description	Price
EU-002630108	15mm	copper x copper	compression	dzt service valve	£9.06
EU-002630111	22mm	copper x copper	compression	dzt service valve	£13.72





NEW calflow® plus

Ref. no	Description	Connection	Colour	Price
AI-811215	valve body only	compression	-	£11.40
AI-81121504	15mm 4 litres / min	compression	grey	£14.23
AI-81121506	15mm 6 litres / min	compression	black	£14.23
AI-81121508	15mm 8 litres / min	compression	white	£14.23
AI-81121510	15mm 10 litres / min	compression	blue	£14.23
AI-81121512	15mm 12 litres / min	compression	red	£14.23
AI-81121515	15mm 15 litres / min	compression	green	£14.23
AI-81121518	15mm 18 litres / min	compression	grey	£14.23

- 2 multi-function flow 15mm isolation with interchangeable flow cartridges and strainer
- Optional use as flow regulator, isolation, strainer or combination of 2 or more



flow regulator cartridges

Ref. no	Description	Colour	Price
AI-Reg04	4 litres flow regulator cartridge	grey	£2.64
AI-Reg06	6 litres flow regulator cartridge	black	£2.64
AI-Reg08	8 litres flow regulator cartridge	white	£2.64
AI-Reg10	10 litres flow regulator cartridge	blue	£2.64
AI-Reg12	12 litres flow regulator cartridge	red	£2.64
AI-Reg15	15 litres flow regulator cartridge	green	£2.64
AI-Reg18	18 litres flow regulator cartridge	grey	£2.64



534 flow limiter M x F

Ref. no	Connection	Flow set L/min	Colour	Price
534102	M x F ½"	2	green	£22.38
534104	M x F ½"	4	grey	£22.38
534105	M x F ½"	5	yellow	£22.38
534106	M x F ½"	6	black	£22.38
534108	M x F ½"	8	white	£22.38
534110	M x F ½"	10	light blue	£22.38
534112	M x F ½"	12	red	£22.38
534116	M x F ½"	16	blue	£22.38
534118	M x F ½"	18	purple	£22.38
534202	F x M ½"	2	olive green	£22.38
534204	F x M ½"	4	grey	£22.38
534205	F x M ½"	5	yellow	£22.38
534206	F x M ½"	6	black	£22.38
534208	F x M ½"	8	white	£22.38
534210	F x M ½"	10	light blue	£22.38
534212	F x M ½"	12	red	£22.38
534216	F x M ½"	16	blue	£22.38
534218	F x M ½"	18	purple	£22.38

- Flow limiter, brass body, chrome plated.
- Maximum working pressure 12 bar
- Maximum working temperature 80°C
- Accuracy ±10%



flow limiter

Ref. no	Connection	Flow set L/min	Colour	Price
SY-RO6LF	M x F ½"	6	green	POA
SY-RO8LF	M x F ½"	8	white	POA
SY-RO10LF	M x F ½"	10	blue	POA
SY-RP6LF	M x F ½"	6	green	POA
SY-RP8LF	M x F ½"	8	white	POA
SY-RP10LF	M x F ½"	10	blue	POA
SY-RP346LF	M x F ½"	6	green	POA
SY-RP348LF	M x F ½"	8	white	POA
SY-RP3410LF	M x F ½"	10	blue	POA



gas lever ball valves & Y pattern strainers



intaball lever operated ball valves for gas

Ref. no	Size	Connections	Type	Weight kg	Box quantity	Price
AI-331115	15mm	copper x copper	compression	0.12	20	£6.78
AI-331122	22mm	copper x copper	compression	0.13	10	£10.77
AI-331128	28mm	copper x copper	compression	0.30	8	£17.71
AI-033103	3/8"	screwed iron	F x F	0.16	20	£7.08
AI-033104	1/2"	screwed iron	F x F	0.23	20	£7.75
AI-033105	3/4"	screwed iron	F x F	0.37	10	£11.78
AI-033106	1"	screwed iron	F x F	0.60	6	£18.06
AI-033107	1 1/4"	screwed iron	F x F	1.03	5	£30.23
AI-033108	1 1/2"	screwed iron	F x F	1.39	3	£42.25
AI-033109	2"	screwed iron	F x F	2.10	2	£60.64
AI-331A05	3/4"	screwed iron	M x F	0.37	10	£12.80
AI-331A06	1"	screwed iron	M x F	0.59	6	£18.88

The intaball gas range of full bore ball valves has been designed and built to meet the requirements of BS EN 331:1998.

- Maximum working temperature : 95°C



intaball combi ball valves

Ref. no	Description	Box quantity	Price
AI-397004	1/2" F x F intaball - no drain port	20	£17.03
AI-397104	3/4" F x F intaball - no drain port	20	£24.20
AI-397204	1" F x F intaball - no drain port	20	£24.35
AI-397115	15mm Cu x Cu intaball - no drain port	20	£19.33
AI-397122	22mm Cu x Cu intaball - no drain port	20	£30.75
AI-401005	1/2" x 3/4" swivel union nut ball - no drain port	20	£30.75
AI-395004	1/2" F x F intaball - with drain port	20	£17.97
AI-395104	3/4" F x F intaball - with drain port	20	£25.16
AI-395115	15mm C x C intaball - with drain port	20	£19.73

- DZR ball valve with built in strainer
- Water or air
- Strainer mesh micron 400
- 16 bar



Y pattern strainers

Ref. no	Size	Connections	Type	Weight kg	Price
Al-595015*	15mm	copper x copper	compression	0.19	£16.35
Al-595022	22mm	copper x copper	compression	0.32	£17.58
Al-595028	28mm	copper x copper	compression	0.51	£24.98
Al-500015	1/2"	screwed iron	F x F	0.13	£8.94
Al-500022	3/4"	screwed iron	F x F	0.18	£11.21
Al-500025	1"	screwed iron	F x F	0.29	£14.67
Al-500031	1 1/4"	screwed iron	F x F	0.76	£26.38
Al-500038	1 1/2"	screwed iron	F x F	0.92	£37.72
Al-500050	2"	screwed iron	F x F	1.63	£56.08
Al-500065	2 1/2"	screwed iron	F x F	2.40	£86.14
Al-500075	3"	screwed iron	F x F	3.37	£171.43
Al-500100	4"	screwed iron	F x F	7.25	£296.12

The altecnic range of OT58 Y pattern strainers is designed for use within both domestic and commercial applications.



- Maximum working pressure : 10 bar
- Maximum working temperature : 120°C
- Filter rating : 400 microns for the following products : 15mm, 22mm, 28mm, 3/8" 1/2", 3/4" and 1"
- Filter rating : 470 microns for the following products : 1 1/4" and 1 1/2"
- Filter rating : 530 microns for the following products : 2", 2 1/2", 3" and 4"
- Filter rating : 100 microns*





flexible tap connectors

Ref. no	Description	Length	Bore	Pressure	Price
PA-252B42B130300	15mm x 1/2" F	300mm	9mm	10 bar	£6.84
PA-251B42B130450	15mm x 1/2" F	450mm	9mm	10 bar	£7.50
PA-252236B520300	22mm x 3/4" F	300mm	9mm	10 bar	£12.42

- Stainless steel braid
- Working pressure : 10 bar
- Working temperature range : +80°C - 0°C



oil lines and flexible hoses

Ref. no	Description	Price
PA-6097727720500	1/4" F x 1/4" F x 500mm	£6.28
PA-6097727720600	1/4" F x 1/4" F x 600mm	£6.72
PA-6097727720700	1/4" F x 1/4" F x 700mm	£7.20
PA-6097727721000	1/4" F x 1/4" F x 1000mm	£8.38
PA-6098067790600	1/4" M x 3/8" F x 600mm	£7.35
PA-6098067790750	1/4" M x 3/8" F x 750mm	£9.36
PA-6098297720900	1/4" F x 1/4" angled female x 900mm	£8.76
PA-6098068291000	1/4" M x 1/4" angled female x 1000mm	£10.55
PA-6098068290500	1/4" M x 1/4" angled female x 500mm	£9.89
PA-300202	nipple 3/8" x 1/4" BSP	£1.02
PA-300101	nipple 1/4" x 1/4" BSP	£1.17

Flexible braided hoses for use with all grades of fuel oil.



oil filters

Ref. no	Size	Description	Price
GA-V7045101ALS	3/8"	aluminium bowl, steel element	£10.79
GA-V7045201ALS	1/4"	aluminium bowl, steel element	£10.79
GA-V70451101AL	3/8"	aluminium bowl, no bleed screw, steel element	£10.12

WRAS
APPROVED
PRODUCT

balancing valve with flow meter

Ref. no	Description	Price
132402	1/2" 2-7 litre/min balancing valve with flow meter	£152.38
132512	3/4" 5-13 litre/min balancing valve with flow meter	£171.57
132522	3/4" 7-28 litre/min balancing valve with flow meter	£167.79
132602	1" 10-40 litre/min balancing valve with flow meter	£156.90
132702	1 1/4" 20-70 litre/min balancing valve with flow meter	£208.82
132802	1 1/2" 30-120 litre/min balancing valve with flow meter	£314.92
132902	2" 50-200 litre/min balancing valve with flow meter	£498.75

For adjusting and control of flows in heating, air conditioning and cooling systems. visual flow indicator and flow adjustment.



flow switch for heating and air conditioning systems

Ref. no	Description	Price
626600	Flow switch for heating and air con, suitable for 1" to 8" pipes	£206.50

- Maximum working pressure : 10 bar
- Working temperature range : -30-120°C



water meters



water meters - isolation valves

Ref. no	Size	Description	Price
AI-195004	1/2"	isolating ball valve 1/2" x 3/4"	£11.63



cold water meters

Ref. no	Size	Description	Price
GG-3003F13	1/2"	USF super dry, single jet, horizontal connection	£62.32
GG-3005F20	3/4"	USF super dry, single jet, horizontal connection	£70.01
PS-100001	1/2"	tagus class D meter	£158.98
PS-100002	3/4"	tagus class D meter	£179.50
PS-100004	1"	tagus class D meter	£349.90
PS-100005	1 1/2"	MVV manifold meter	£201.94
GG-2003013	1/2"	domus DBRF wet dial single jet	£42.39
GG-2005020	3/4"	domus DBRF wet dial single jet	£69.42
GG-2007025	1"	domus DBRF wet dial single jet	£167.71
GG-2007030	1 1/4"	domus DBRF wet dial single jet	£177.81
GG-2007040	1 1/2"	domus DBRF wet dial single jet	£361.23
GG-IARF15	1/2"	IARF dry dial multi jet	£105.92
GG-IARF20	3/4"	IARF dry dial multi jet	£112.71
GG-IARF25	1"	IARF dry dial multi jet	£191.04
GG-IARF30	1 1/4"	IARF dry dial multi jet	£236.40
GG-IARF40	1 1/2"	IARF dry dial multi jet	£517.26
GG-OARF50	2"	OARF dry dial multi jet, flanged	£680.89
GG-OARF50.1	2"	OARF dry dial multi jet, BSP screwed	£633.53

hot water meters

Ref. no	Size	Description	Price
GG-3003C13	1/2"	USC dry dial single jet	£63.69
GG-3005C20	3/4"	USC dry dial single jet	£73.56

cold water meters

Ref. no	Size	Description	Litres/pulse	Price
GG-USLF15P1	1/2"	USLF super dry, single jet	1	£112.15
GG-USLF20P1	3/4"	USLF super dry, single jet	1	£117.85

primary billing meters

Ref. no	Size	Description	Litres/pulse	Price
PS-P00001	1/2"	tagus class D meter	1	£294.79
PS-P00002	3/4"	tagus class D meter	1	£341.46
PS-P00003	1"	tagus class D meter	1	£667.45
PS-P00004	1/2"	MVV manifold version	1	£315.58



Mustang Drive, Stafford ST16 1GW
T: 01785 218200 F: 01785 218201 E: sales@altecnic.co.uk

www.altecnic.co.uk

ALT/PL/1110

For latest prices and delivery to your door visit MyTub Ltd - 0845 303 8383 - www.mytub.co.uk - info@mytub.co.uk

