

# BRISTAN

## Almond Kitchen Sink Tap

### Installation Instructions & User Guide



**Please keep these instructions for future reference and request of replacement parts**


For latest prices and delivery to your door visit MyTub Ltd - [www.mytub.co.uk](http://www.mytub.co.uk) - [info@mytub.co.uk](mailto:info@mytub.co.uk)

## Contents

Thank you for choosing Bristan, the UK's leading taps and showers expert. We have designed this product with your enjoyment in mind. To ensure that it works to its full potential, it needs to be fitted correctly. These fitting instructions have been created to give you all of the information you need and, if you need any further help, please do not hesitate to give us a call on 0844 701 6273.

|                              |       |
|------------------------------|-------|
| Important Safety Information | 03    |
| General Specifications       | 03    |
| Dimensions                   | 04    |
| Installation Requirements    | 05-06 |
| Installation                 | 06-08 |
| Maintenance                  | 09    |
| Troubleshooting              | 10    |
| Guarantee                    | 11    |

## Important Safety Information

- Please read these instructions thoroughly and retain for future use.
- All products manufactured and supplied by Bristan are safe provided they are installed correctly, used correctly and receive regular maintenance in accordance with these instructions.
- If you are in any doubt about your ability to install this product safely you must employ the services of an experienced qualified plumber.
- Remove all packaging and check the components for damage before starting installation.
-  Before starting any installation please consider the following: Prior to drilling into walls, check that there are no hidden electrical wires, cables or water supply pipes. This can be checked with the aid of an electronic detector.
- If power tools are used do not forget to:
  - Wear eye protection
  - Unplug equipment after use
- This product **must** not be modified in any way as this will invalidate the guarantee.
- These fittings need to be installed in accordance with and meet the requirements of the Water Supply (Water Fittings) Regulations 1999 and Scottish Byelaws 2004.

## General Specifications

|                                |     |     |
|--------------------------------|-----|-----|
| Operating pressure range (bar) | Min | Max |
|                                | 1.5 | 7.0 |

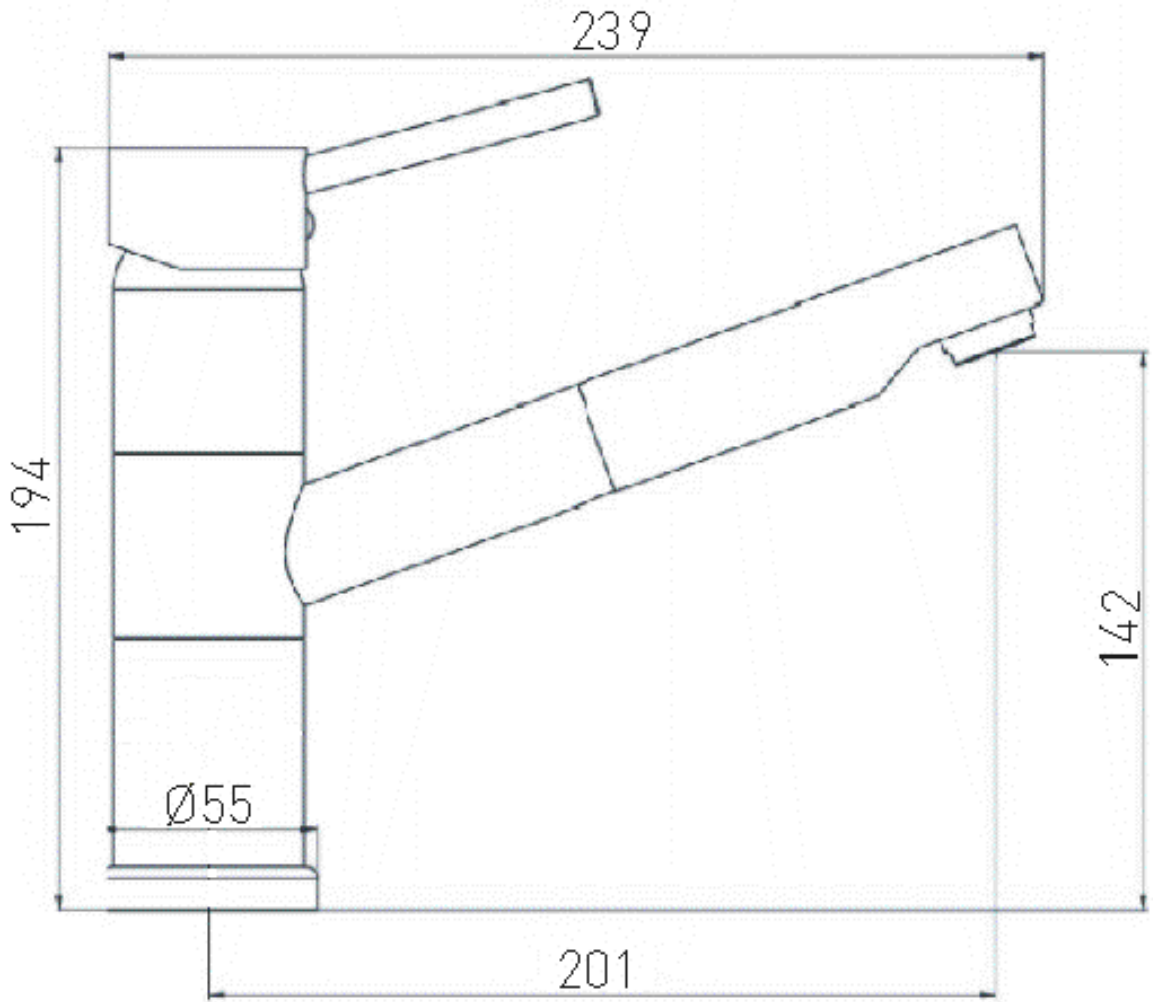
Maximum static pressure – 10.0 bar

NOTE:- Nominally equal (balanced) inlet supply pressures are recommended for optimum Performance of mixer taps.

Designed to comply with BS EN 200 for single taps / combination taps for water systems of type 1 and 2 general technical specifications; and to be used within systems designed to BS 6700.

BS 6700 recommends the temperature of stored water should never exceed 65°C. A stored water temperature of 60°C is considered sufficient to meet all nominal requirements and will minimise the build up of lime scale in hard water areas.

## Dimensions



## Installation Requirements.

**WARNING:** This tap must be supplied from a storage cistern

This fitting needs to be installed in accordance with the following Installation Requirements and Notes (IRN) to ensure they meet the requirements of the Water Supply (Water Fittings) Regulations 1999 and the Scottish Byelaws 2004. For further details contact your Local Water Authority.


**For backflow protection in premises or installations up to fluid category 5.**

The vertical distance of the outlet above the spill-over level shall be not less than 20 mm or twice the diameter of the inlet pipe to the fitting, whichever is the greater. If the fitting cannot be installed as indicated it shall be installed:-


- a) With a backflow prevention arrangement suitable for the Fluid Category or
- b) so that it draws water by gravity only from a cistern, cylinder or tank having a permanently open vent pipe, the vertical distance between the point at which the pipe or pipes supply water to the fittings is or are connected to the supply and the spill-over level of any fixed appliances is not less than the dimensions stated above, and the vent pipe or pipes supply(ies) no other fittings (other than a draining tap) at a lower level.

It is essential that all pipe work is flushed through to remove debris and swarf that could otherwise damage the fitting. Once the pipe work has been flushed through, turn off the water supply at the stop valve.

Two non-return valves are supplied with this mixer, one of each should be fitted in the hot and cold water supply to the mixer to prevent the possibility of backflow, however this mixer tap must be installed in accordance with the above mentioned Regulations.

 **Important:** Independent stop valves complying with the current water regulations should be fitted as a means of isolating both water supplies to the fitting for servicing and/or maintenance work.

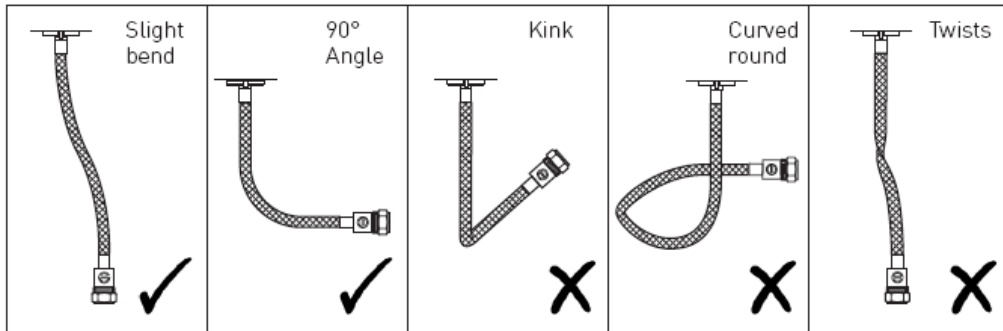
Flush through the pipework to ensure removal of debris. Turn off the mains water supply, close any isolating valves and attach flexible connecting pipes.

 **Important:** DO NOT OVERTIGHTEN. Carefully screw in the 'flexible connecting pipes'. (Tighten them by hand). Connect the flexible connecting pipes to the household water supply pipes.

Care must be taken when connecting the flexible connection pipes to the household pipework to ensure they do not bend sharply and kink or twist.

See overleaf for recommended ways to fit the flexible connecting pipes:

## Installation Requirements Cont.



**!** **Important:** Failure to follow these guidelines may result in poor performance and damage to the flexible connecting pipes

## Installation.

1. Identify all components are present prior to starting installation using the diagram overleaf.

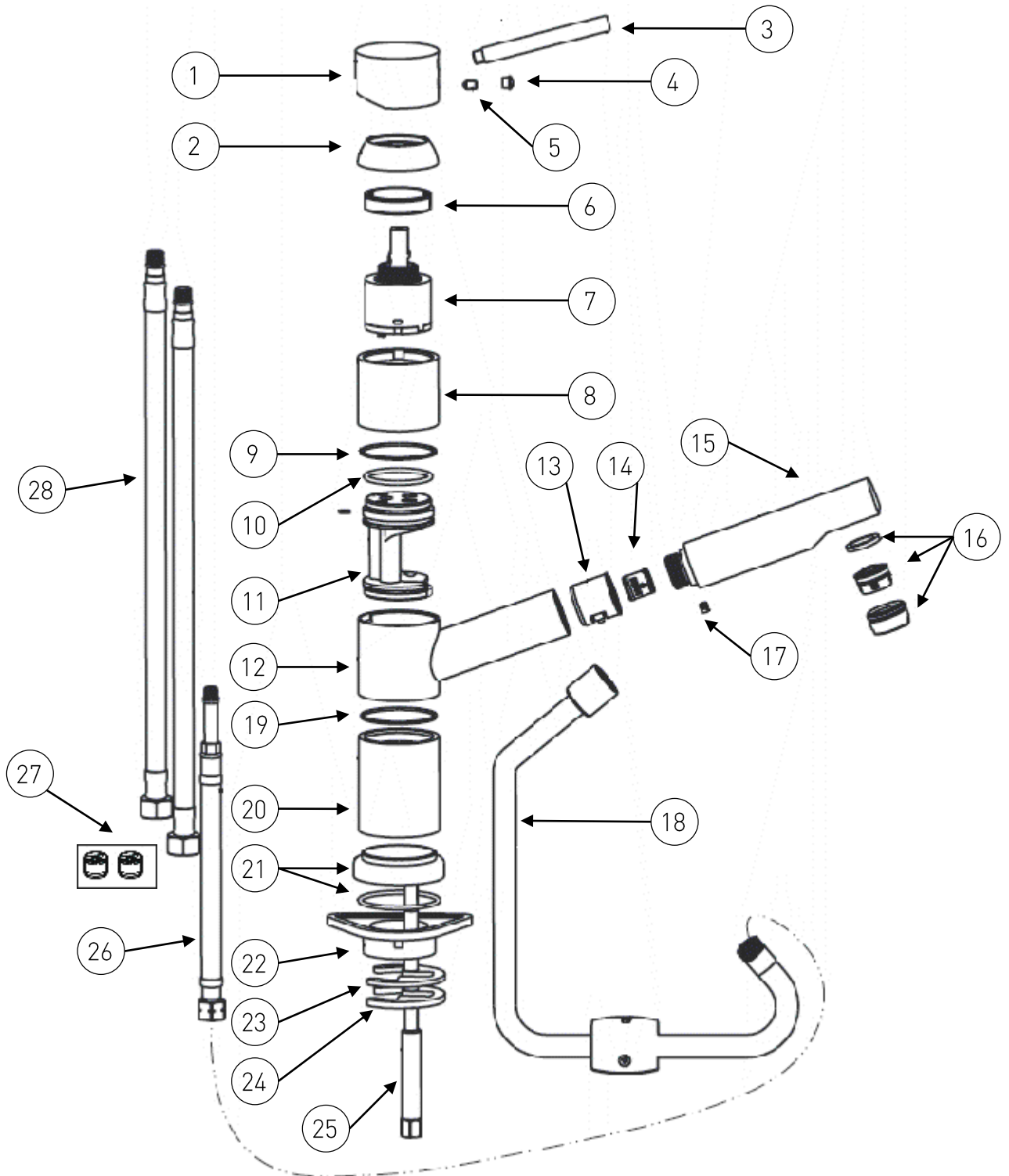
|     |                         |    |     |                          |    |
|-----|-------------------------|----|-----|--------------------------|----|
| 1.  | Handle Body             | x1 | 15. | Handset                  | x1 |
| 2.  | Shroud                  | x1 | 16. | Anti-Splash Assembly     | x1 |
| 3.  | Handle Lever            | x1 | 17. | Spout Grub Screw         | x1 |
| 4.  | Grub Screw Cap          | x1 | 18. | Hose                     | x1 |
| 5.  | Grub Screw              | x1 | 19. | Mixer Body Seal (Lower)  | x1 |
| 6.  | Cartridge Retaining Nut | x1 | 20. | Mixer Body (Base)        | x1 |
| 7.  | Cartridge               | x1 | 21. | Plinth                   | x1 |
| 8.  | Mixer Body (Neck)       | x1 | 22. | Fixing Plate             | x1 |
| 9.  | Mixer Body Seal (Upper) | x1 | 23. | 'C' Shaped Rubber Washer | x1 |
| 10. | O-Ring                  | x1 | 24. | 'C' Shaped Metal Washer  | x1 |
| 11. | Internal Housing        | x1 | 25. | Fixing Stud              | x1 |
| 12. | Mixer Body (Centre)     | x1 | 26. | Spout Connecting Pipe    | x1 |
| 13. | Handset Connection      | x1 | 27. | Non-Return Valve         | x2 |
| 14. | Non-Return Valve        | x1 | 28. | Flexible Connecting Pipe | x2 |

2. Screw fixing stud (25) with shorter threaded section into the small threaded hole in the base of the mixer tap (small hole to the right side of the black pull-out hose in the base of the mixer when viewed with the spout pointing upwards).

3. Fit plinth with base O-ring (21) to base of tap and carefully screw the short pull out hose connecting pipe (26) into centre hole in the base of the mixer body (20) as tight as possible by hand only (DO NOT OVERTIGHTEN).

4. Carefully screw both inlet flexible connecting pipes (28) into the two remaining outer holes in base of mixer body as tight as possible by hand only (DO NOT OVERTIGHTEN).

## Installation cont.



## Installation Cont.

**Please note:** It may be necessary (depending on size of hole in sink/work surface) to only fit one flexible connecting pipe to the mixer prior to fitting the mixer in order to feed all flexible connecting pipes and fixings through the hole and then fit the second flexible connecting pipe from underneath after fitting the mixer.

5. Fit the mixer tap with plinth (21) fitted to the top of the sink/work surface feeding the two flexible connecting pipes (28) and the black hose (18) carefully through the fixing hole.
6. Offer up the plastic fixing plate (22) with flatter surface towards the underside of the sink/work surface and place C-shaped rubber washer (23) and C-shaped metal fixing plate (24) onto threaded stud (25) and fully tighten to sink/work surface with brass fixing nut (25) with hexagonal end pointing downwards to allow suitable spanner access.
7. Under sink/work surface screw threaded brass adaptor end of black hose (18) on to end of small connecting pipe (26) making sure small washer is in place and securely tighten.
8. Split the two halves of the metal hose weight by removing both screws and place around the black hose (18) towards the bottom of a vertical section of black hose so that it is pulling the pull-out handset back into the spout and replace both screws and tighten.
9. Connect both inlet flexi connecting pipes (28) with a non-return valve (27) fitted in each between the connecting pipes and the hot and cold water supplies/household pipe work with the arrow on the casing pointing in the direction of the water flow. (The cold inlet pipe should be on the right and hot on the left when the mixer is viewed from the front).

**Please Note:** Care must taken when connecting the flexible connection pipes to the household pipe work to ensure they do not bend sharply and kink or twist. See below for recommended ways to fit the flexible connecting pipes:

**Important:** Failure to follow these guidelines may result in poor performance and damage to the flexible connecting pipes.

10. Carefully turn on both water supplies and gently turn on mixer by lifting the lever to the fully on position and let run for a few minutes checking all joints and connections for leaks.

## Operation.

Moving the lever upwards/downwards from the mixer body will turn on/off and increase/decrease the flow of water.

Moving the lever either towards the left or right (when the mixer is viewed from the front) will increase/decrease the water temperature.



## Maintenance

### General Cleaning

Your fitting has a high quality finish and should be treated with care to preserve the visible surfaces. All finishes will wear if not cleaned correctly. The only safe way to clean your product is to wipe with a soft damp cloth. Stains can be removed using washing up liquid. All bathroom cleaning products (powders and liquids) will damage the surface of your fitting, even the non-scratch cleaners.

**Note:** Never use abrasive detergents or disinfectants or those containing alcohol, hydrochloric acid or phosphoric acid.



Bristan recommend E-cloth for cleaning all of our bathroom & kitchen products. Using just water, E-cloth gives a smear free, deep clean by breaking up and holding dirt, which normal cloths leave behind. Order through your Bristan stockist (order code: (ECLOTH).

If your fitting begins to leak the following should be carried out;

Isolate both hot and cold water supplies to the tap by either:

- Turning the water supply off at the mains stopcock or
  - Turning off the isolation valves to the tap.
1. Remove the cap (4) from under the handle lever (3) to reveal the grub screw (5).
  2. Unscrew the grub screw (5) and pull the handle upwards from the shroud (2).
  3. Unscrew the shroud (2), remove the cartridge retaining nut (6) and pull out the cartridge (7).
  4. Carefully clean the cartridge seals and seating.
  5. If necessary replace the cartridge. (Please visit [www.bristan.com/sparesfinder](http://www.bristan.com/sparesfinder) in order to find spare parts for this product).
  6. Replace the cartridge into the tap body (8) and tighten retaining nut (6) fully.
  7. Replace handle assembly.
  8. Turn on water supply and check for leaks.
  9. Contact our helpline should if problem persists.

## Troubleshooting

| Symptom   | Cause   | Remedy   |
|---|---|--|
| No flow or poor flow rate.  | Partially closed stop or service valve in water supply pipework to the tap.   | Open stop or service valve.  |
|   | Head of water is below the minimum distance required.   | Refer to the Specification section for minimum pressures required.                           |
|   | Possible airlock / blockage in supply pipework  | Remove water supplies from the fitting and flush the system to remove any airlocks / debris. |
|   | Cartridge / Valve not opening fully.  | Service fitting. Refer to maintenance section on page 09.                                    |
| Water dripping for a few seconds after the tap has been turned off. | This is caused by 'capillary action' and residual water in the spout being siphoned out. This should only last for a couple of seconds. |  |
| Constant dripping / leaking when the tap is not in use.             | Cartridge / Valve not fully shutting off.   | Service fitting and replace cartridge / valve. Refer to maintenance section on page 09.      |
| Fitting does not turn on.   | Water supplies not turned on.   | Check that the water supplies to the fitting are turned on.                                  |
|   | Closed stop or service valve.   | Open stop or service valve.  |

## Bristan Guarantee

Bristan offers solid guarantees to provide you with complete peace of mind.

### Taps and Mixers

5 year parts and 1 year labour\*. Gold, painted and special finishes 3 years parts only.

All subject to proof of purchase.

### Mixer Shower Valves

5 year parts. 5 year labour\* (subject to registration), or 1 year with proof of purchase.

Gold, painted and special finishes 3 years parts only.

### Pumps and Power Showers

2 year parts. 1 year labour\* (subject to registration).

### Electric Showers/Instantaneous Water Heaters

2 year parts. 1 year labour\* (subject to registration).

### Accessories

5 year parts only. Includes bathrooms accessories, shower accessories (e.g. hoses, handsets and poles), wastes, WC levers and light pulls. Gold, painted and special finishes 3 years parts only.

### Sanitaryware

5 year parts only. Subject to proof of purchase.

\*Labour provided by an approved Bristan engineer. Guarantee only applies to products with a manufacturing fault. A deferred payment will be necessary in order to secure any visits by our engineers which will be charged if the problem is found **not** to be a manufacturing fault. If the fault is found to be down to a manufacturing error, the payment will be released and not charged.

This guarantee applies to products purchased within the United Kingdom or Republic of Ireland, but does not apply to products used commercially.

The guarantee is only available to original purchasers who have proof of purchase.

The installation must allow ready access to all products for the purpose of inspection, maintenance or replacement.

Any part found to be defective during the above guarantee period will be replaced without charge, providing that the product has been installed in accordance with the instructions, used as intended, and regularly serviced.

Servicing should be carried out at regular intervals of no more than 12 months and more frequently in hard water areas (heavy lime scale) areas.

In the unlikely event that any problems are encountered with the product's performance on installation, you must obtain guidance/authorisation from our Customer Service Department, and be able to supply proof and date of purchase, before any remedial action is taken.

The guarantee excludes general wear and tear and damage caused by accident, misuse or neglect, and does not cover the following:

- Components that are subject to general wear and tear such as filters, seals, 'O' rings and washers etc.
- Damage caused by faulty installation
- Damage caused by lime scale or any waterborne debris
- Damage caused by inappropriate cleaning products (see user instructions)
- Damage caused by the use of non-Bristan parts
- The product being used for a purpose other than intended by the manufacturer.

In the interests of continuous product improvement Bristan reserves the right to alter specification as necessary.



**Guarantee**

# BRISTAN

This booklet covers product code:

ALM PULLSNK C

**Helpline**

**0844 701 6273**

Bristan Group Limited

Birch Coppice Business Park, Dordon, Tamworth, Staffordshire B78 1SG

A Masco Company

Website: [www.bristan.com](http://www.bristan.com)

Telephone: 0844 701 6274      Facsimile: 0844 701 6275

Email: [enquire@bristan.com](mailto:enquire@bristan.com)