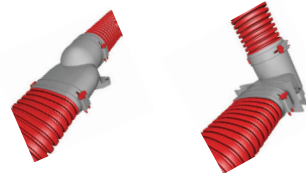
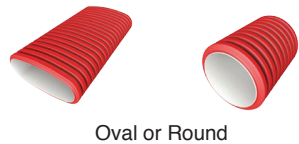


# AIRFLEX DUCTING SOLUTIONS

## AIRFLEX PRO



No loss of Hydraulic Performance

### Key Features

- Zero leakage ensures highest performance
- 70% time saving on installation
- Interchangeable duct system (75mm dia / 51mm oval) without pressure loss
- Compact, suits narrow joists and low ceiling voids
- Durable with high crushability (16 kN/m<sup>2</sup>)
- Very low noise transmission between rooms
- Easy cleaning through access panels
- Smooth bore with antistatic and antibacterial lining
- SAP Appendix Q Eligible

### Flexible, Durable and Zero Leakage

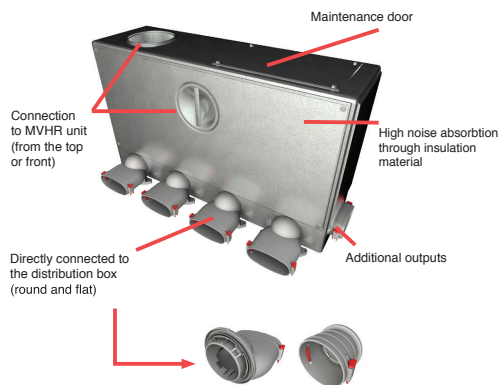
A quick, easy to fit system of semi-rigid pipe that can result in up to 70% time savings during the on-site installation process, compared to other duct methods. This innovative system uses low resistance and anti bacterial, smooth round and oval tubes which connect each room to the heat recovery unit via an air distribution box with acoustic lining.

Semi rigid ducting performance data is now recognised by the UK Government as an input for Standard Assessment Procedure (SAP) calculations via Appendix Q.

Airflex Pro ducting has been tested and approved by BRE (Building Research Establishment) who state that semi-rigid ducting has at least equal or better performance characteristics than equivalent rigid ducting.

### Mix and Match “Oval or Round” No loss of Performance

The Airflex Pro Oval ducting is designed to equal the Hydraulic Performance of Airflex Pro Round so both types can be used within the same system without a loss of performance.



PART NUMBERS	PRODUCT	PART NUMBERS	PRODUCT
90000255	Airflex Pro Oval Coil	9041130	Airflex Pro Round Coil
90000254	Sealing Rings Oval	9041133	Sealing Rings Round
90000257	Sealing Cap Oval	90000256	Sealing Cap Round
90000253	Straight Connector Oval	90411332	Straight Connector Round
90000249	Ceiling Plenum Oval	90000250	Ceiling Plenum Round
90000259	Oval Spigot Connection	90000260	Round Spigot Connection
90000251	90° Transition Piece	9041178	Supply Air Valve
90000252	Straight Transition Piece	9041179	Extract Air Valve
9041266	External Wall Grille	9041158	Roof Outlet
90000264	6-Port Distribution Box	90000266	10-Port Distribution Box
90000265	6-Port Dist. Box (narrow)	90000269	15-Port Distribution Box

### Technical Support

Product information: energy consumption, fan curves, dimensions are available from data sheets on our web site: [www.airflow.com](http://www.airflow.com) alternatively, further assistance is available from our technical support team.

Call: 01494 560 800

Visit: [airflow.com](http://airflow.com)



**Airflow Developments Limited**  
Aidelle House, Lancaster Road,  
Cressex Business Park,  
High Wycombe, Buckinghamshire,  
HP12 3QP

E-mail: [info@airflow.com](mailto:info@airflow.com)  
Telephone: +44 (0) 1494 525252  
Facsimile +44 (0) 1494 461073  
[airflow.com](http://airflow.com)

© Airflow Developments Limited. Airflow Developments Limited reserve the right, in the interests of continuous development, to alter specifications without prior notice. All orders are accepted subject to our conditions of sale which are available on request

