

# techflo qt

## Standard Single Pumps

Techflo qt centrifugal pumps use the most advanced multistage impeller and diffuser design which not only provides high pressure and flow but also provides a whisper quiet operation when boosting the performance of a single shower, complete bathroom or whole house. Suitable for positive head applications only.

Standard pumps require a flow of 1.0 l/min to start.

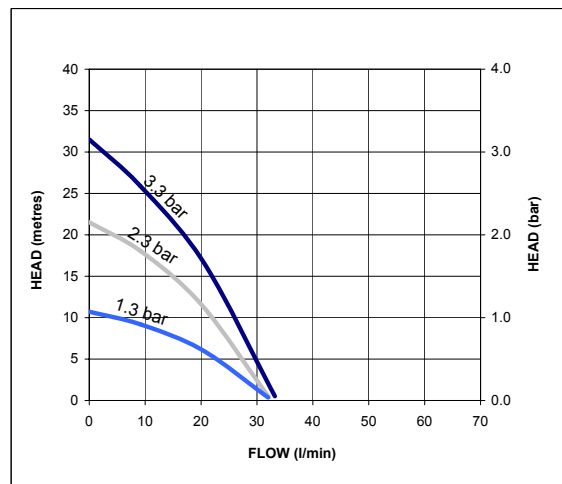


### Features

- Durable plastic construction
- 1.3, 2.3 and 3.3 bar performance options
- Automatic switching
- Nitrile/carbon/silicon carbide seal
- 22 mm push-in flexible hoses with integral isolating valves on inlets
- 22 mm push-in connections
- Pre-wired with 1.5 metre power cable
- Anti-vibration feet
- 3-year guarantee (subject to conditions)

### Application

- Boost the water pressure in either the hot or cold supply



For further advice on selecting the correct pump call  
or e-mail [info@stpumps.co.uk](mailto:info@stpumps.co.uk)

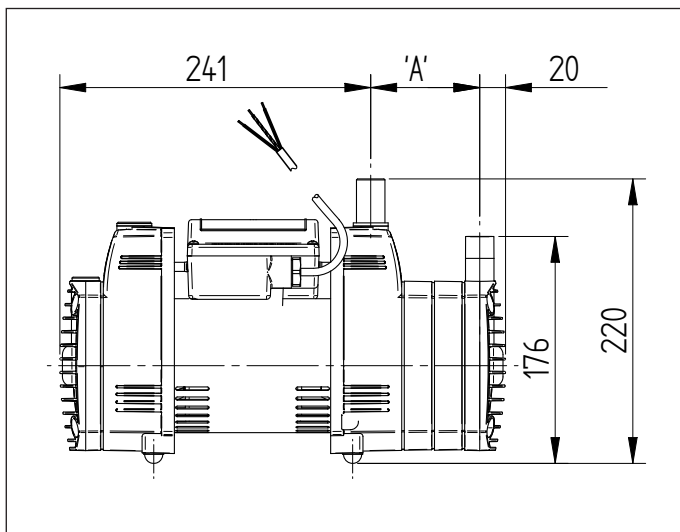
**pumpassist**  
HELPLINE +44 (0) 844 98 000 97

## techflo qt

| Pump Model     |                                  | S1.3 bar<br>Single<br>49077   | S2.3 bar<br>Single<br>49078 | S3.3 bar<br>Single<br>49079 |
|----------------|----------------------------------|---|-----------------------------|-----------------------------|
| General        | Guarantee                        | 3 years   |                             |                             |
|                | WRAS approval                    | 1406331   |                             |                             |
| Features       | Pump type                        | Centrifugal   |                             |                             |
|                | Mechanical seal                  | Nitrile / Carbon / Silicon Carbide  |                             |                             |
|                | Anti-vibration feet              | ✓   | ✓                           | ✓                           |
|                | Inlet strainer(s)                | ✓   | ✓                           | ✓                           |
|                | Flexible hoses                   | 2   | 2                           | 2                           |
|                | Dry run protection               | ✓   | ✓                           | ✓                           |
| Performance    | Maximum head (closed valve)      | 1.3 bar   | 2.3 bar                     | 3.3 bar                     |
|                | Performance @ 9 l/min            | 0.9 bar   | 1.7 bar                     | 2.5 bar                     |
|                | Performance @ 18 l/min           | 0.7 bar   | 1.3 bar                     | 1.7 bar                     |
|                | Maximum flow                     | 33 l/min  | 32 l/min                    |                             |
|                | Maximum static inlet pressure    | 6 meters  |                             |                             |
|                | Maximum working pressure*        | 460 kPa (4.6 bar)   |                             |                             |
|                | Maximum ambient air temperature  | 40 °C   |                             |                             |
|                | Min / Max water temperature**    | Min 4 °C / Max 65 °C  |                             |                             |
|                | Flow switch sensitivity (approx) | 1.0 l/min   |                             |                             |
| Connections    | Pump connections                 | 22 mm male  |                             |                             |
| Flexible hoses | Connections                      | 22 mm female x 22 mm push-in x 200 mm long, isolating valves on inlet hoses |                             |                             |
| Motor          | Type                             | Induction, auto-reset thermal trip  |                             |                             |
|                | Duty rating                      | Intermittent, 30 mins on, 30 mins off @ 20 l/min                            |                             |                             |
| Electrical     | Power supply / phase / frequency | 230 V a.c. / 1 / 50 Hz  |                             |                             |
|                | Current (full load)              | 0.8 Amps  | 1.2 Amps                    | 1.8 Amps                    |
|                | Power consumption                | 190 Watts   | 290 Watts                   | 410 Watts                   |
|                | Fuse rating                      | 5 Amps  |                             |                             |
|                | Power cable (pre-wired)          | 1.5 metres  |                             |                             |
| Physical       | Enclosure protection             | IPX2  |                             |                             |
|                | Length                           | 299 mm  | 322 mm                      | 345 mm                      |
|                | Width                            | 134 mm  |                             |                             |
|                | Height (excluding hoses)         | 220 mm  |                             |                             |
|                | Weight (including fittings)      | 5.3 Kg  | 5.6 Kg                      | 6.3 Kg                      |

\* The maximum pressure that can be applied to the pump under any installation conditions.

\*\* A stored water temperature of 60 °C is considered sufficient to meet all normal requirements and will minimise deposition of scale in hard water areas.



| Pump Description | Dim. 'A' |
|------------------|----------|
| S1.3 bar Single  | 38 mm    |
| S2.3 bar Single  | 61 mm    |
| S3.3 bar Single  | 84 mm    |

Stuart Turner Limited reserves the right to amend specifications without notice.