

Malleable Iron

Options:

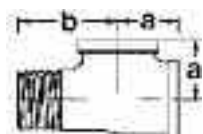


Galvanised



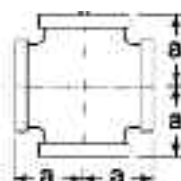
Black

163 Male & Female Tee PN25



FITTING SIZE (inch)	DIMENSIONS (mm)		WEIGHT (kg) per 100 pieces
	a	b	
1/2	29	41	12.36
3/4	33	48	19.85
1	38	54	31.19

171 Cross PN25



FITTING SIZE (inch)	DIMENSIONS (mm)	WEIGHT (kg) per 100 pieces
	a	
1/4	21	7.08
3/8	25	10.04
1/2	28	15.48
3/4	33	21.68
1	38	37.12
1 1/4	45	73.60
1 1/2	50	77.35
2	58	101.76
2 1/2	69	165.73
3	78	233.81
4	96	447.43

Every effort has been made to ensure that the information contained in this publication is accurate at the time of publishing. Crane Ltd assumes no responsibility or liability for typographical errors or omissions or for any misinterpretation of the information within the publication and reserves the right to change without notice.