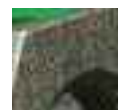


Malleable Iron

Options:

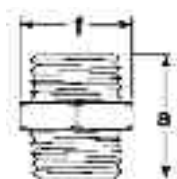


Galvanised



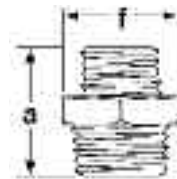
Black

144 Octagon Nipple PN25



FITTING SIZE (inch)	DIMENSIONS (mm)		WEIGHT (kg) per 100 pieces
	a	f	
*1/4	33	15	2.50
*3/8	35	18	3.91
1/2	44	23	6.50
3/4	49	28	9.90
1	53	36	22.00
1 1/4	57	46	34.00
1 1/2	59	52	42.30
2	68	64	62.70
2 1/2	80	77	101.04
3	89	101	162.12
4	102	124	223.92
6	114	172	492.34

145 Hexagon Nipple PN25



FITTING SIZE (inch)	DIMENSIONS (mm)		WEIGHT (kg) per 100 pieces
	a	f	
*1/4 x 1/8	30	15	2.13
*3/8 x 1/4	35	18	4.02
1/2 x 1/4	41	23	6.42
1/2 x 3/8	41	23	5.81
3/4 x 3/8	48	28	9.32
3/4 x 1/2	49	28	9.67
1 x 1/2	56	35	15.85
1 x 3/4	56	35	15.64
1 1/4 x 1/2	64	44	25.03
1 1/4 x 3/4	64	44	25.39
1 1/4 x 1	64	44	23.48
1 1/2 x 1	64	50	28.94
1 1/2 x 1 1/4	64	50	29.26
2 x 1	69	61	48.82
2 x 1 1/4	69	61	47.05
2 x 1 1/2	71	62	49.00
2 1/2 x 2	77	77	74.78
3 x 2	86	90	104.75
3 x 2 1/2	85	90	109.39

*Supplied in mild steel.

Every effort has been made to ensure that the information contained in this publication is accurate at the time of publishing. Crane Ltd assumes no responsibility or liability for typographical errors or omissions or for any misinterpretation of the information within the publication and reserves the right to change without notice.