

12/50 Centrifugal Pumps

The 12/50 pumps with 12 or 24 V d.c. motor options have a choice of seal material combinations making them adaptable for a range of applications.

Application

The compact size and robust construction of these pumps, combined with a range of features, including heavy duty d.c. motors offer the ideal solution to demanding pumping problems such as:

- Wash down on mixer trucks
- Bus heating circulation
- Construction plant - road rollers
- Marine - water system, air conditioning systems, heat exchanger
- Railway trains - water pressure systems

Features

- 12 V or 24 V d.c. options
- Seal options
- Compact size
- Durable construction

Materials

Body	Brass
Impeller	Plastic or Brass
Pump shaft	Stainless Steel
Seal options	Nitrile/carbon/ceramic Viton/carbon/silicon

Operating Conditions

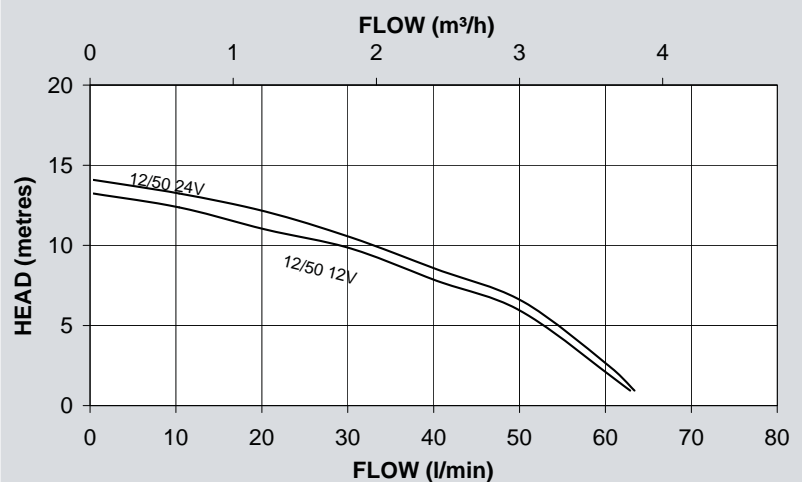
Max. liquid temp.	80°C
Min. liquid temp.	4°C
Max. suction lift	4.6 m
Max. ambient air temp.	40°C
Max. viscosity	50 Secs redwood no. 1 9.5 centistokes

Pump Connection Sizes

Inlet	G 3/4 Female
Outlet	G 3/4 Female

Accessories

G 3/4/1 Plastic Spring Loaded Foot Valve and Strainer	26704
---	-------



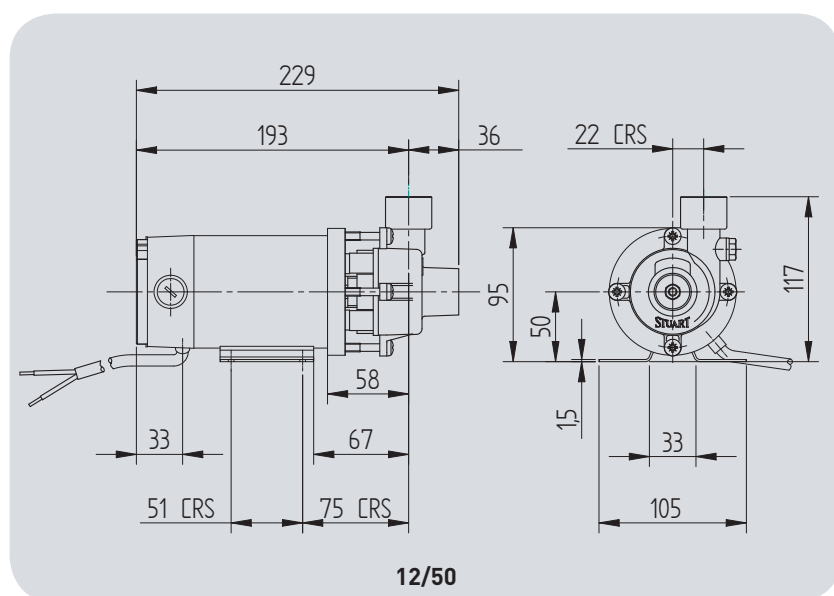
STUART



12/50 Centrifugal Pumps

Model	Motor	Nominal Watts	Watts full flow	Amps full load	Impeller	Seal	Carton dims. mm			Gross weight (packed) kg	Part no.
							L	x W	xH		
12/50	12V d.c.	160	228	19.0	Plastic	Nit/Car/Cer	323	185	188	3.4	46164
12/50	12V d.c.	160	228	19.0	Brass	Nit/Car/Cer	323	185	188	3.4	46166
12/50	12V d.c.	160	228	19.0	Brass	Vit/Car/Sil	323	185	188	3.4	46167
12/50 c/w vent	24V d.c.	175	196	8.2	Plastic	Nit/Car/Cer	323	185	188	3.4	46212
12/50	24V d.c.	175	196	8.2	Brass	Nit/Car/Cer	323	185	188	3.4	46168
12/50	24V d.c.	175	196	8.2	Brass	Vit/Car/Sil	323	185	188	3.4	46169

Both motors are built to IP44 using permanent magnet totally enclosed motor.



All dimensions shown are in mm.

Stuart Turner Ltd
Henley-on-Thames
Oxfordshire RG9 2AD
England
Telephone: +44 (0)1491 572655
Fax: +44 (0)1491 573704

Email:
pumps@stuart-turner.co.uk
Web:
www.stuart-turner.co.uk

V.A.T. REG. No. 199 0987 92.
Registered in England No. 88368.
Registered Office:
Market Place, Henley-on-Thames

**STUART
TURNER**